

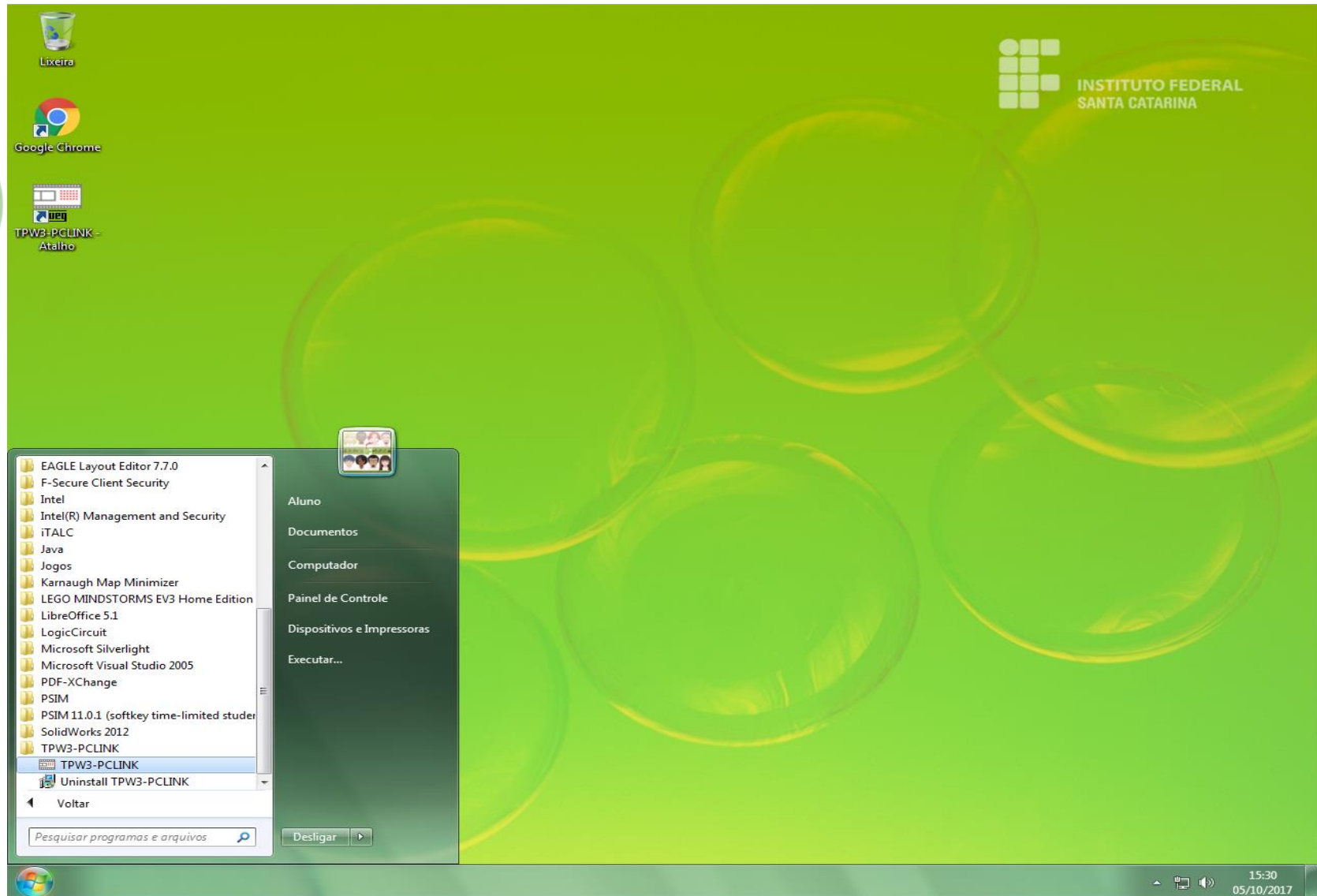
MINISTÉRIO DA EDUCAÇÃO
SECRETARIA DE EDUCAÇÃO PROFISSIONAL E TECNOLÓGICA
INSTITUTO FEDERAL DE EDUCAÇÃO, CIÊNCIA E TECNOLOGIA DE SANTA CATARINA
FIC – PROGRAMAÇÃO DE CLP BÁSICO

MATERIAL 4

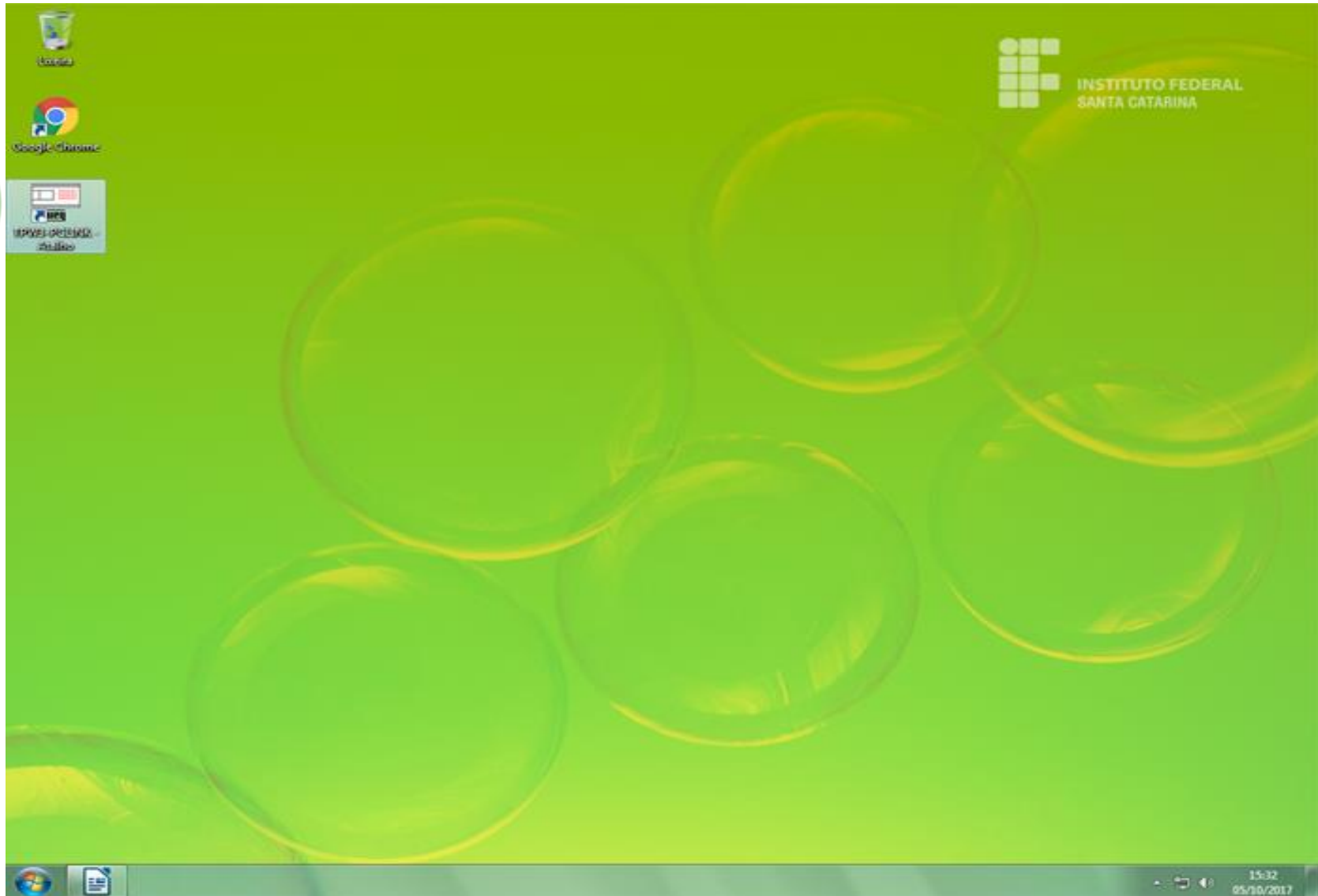
(FIC Programação Básica CLP Básico)

Prof. Rogério da Silva

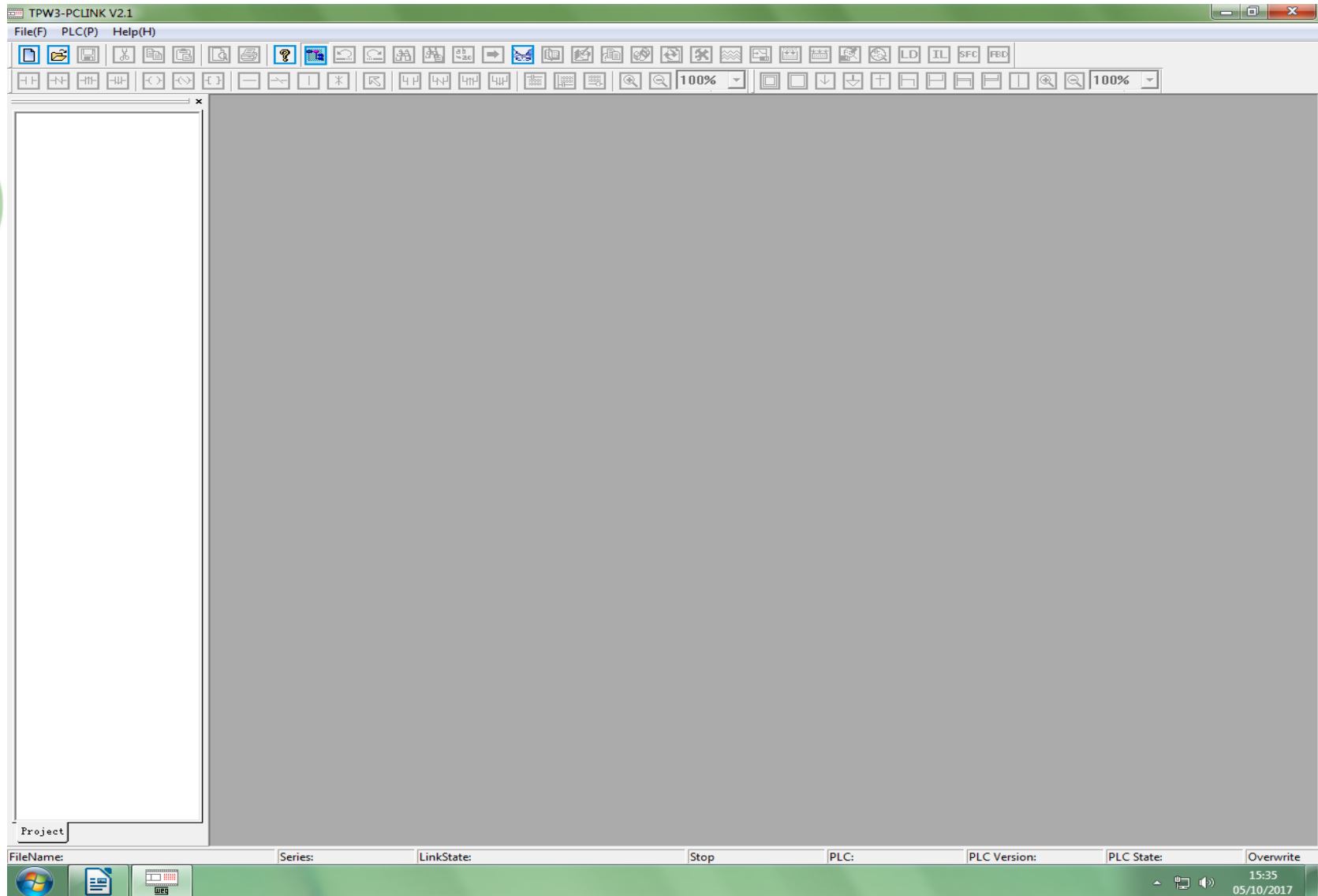
Abrindo o Software da WEG família TPW03



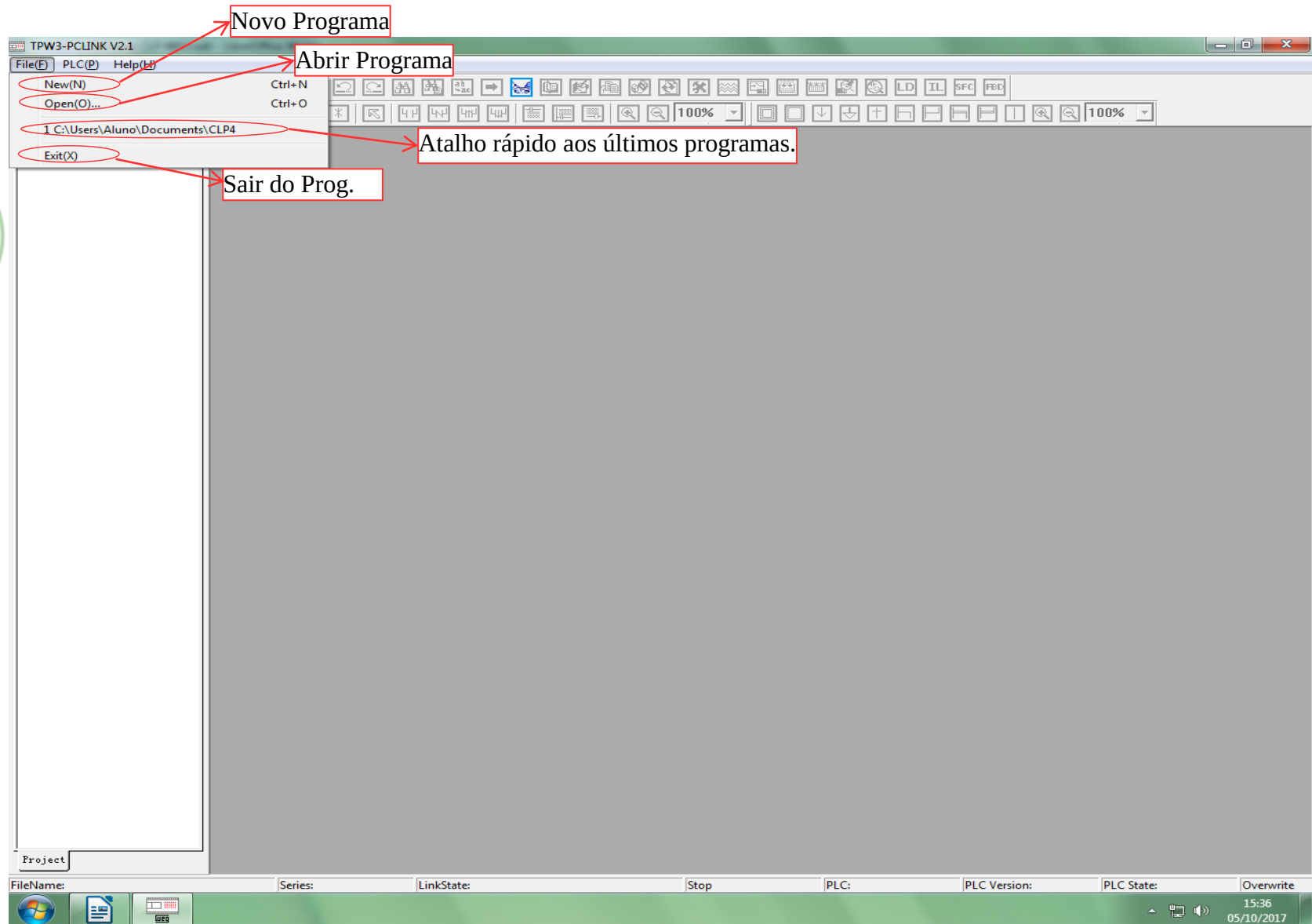
Abrindo o Software da WEG família TPW03



Software TPW03 aberto

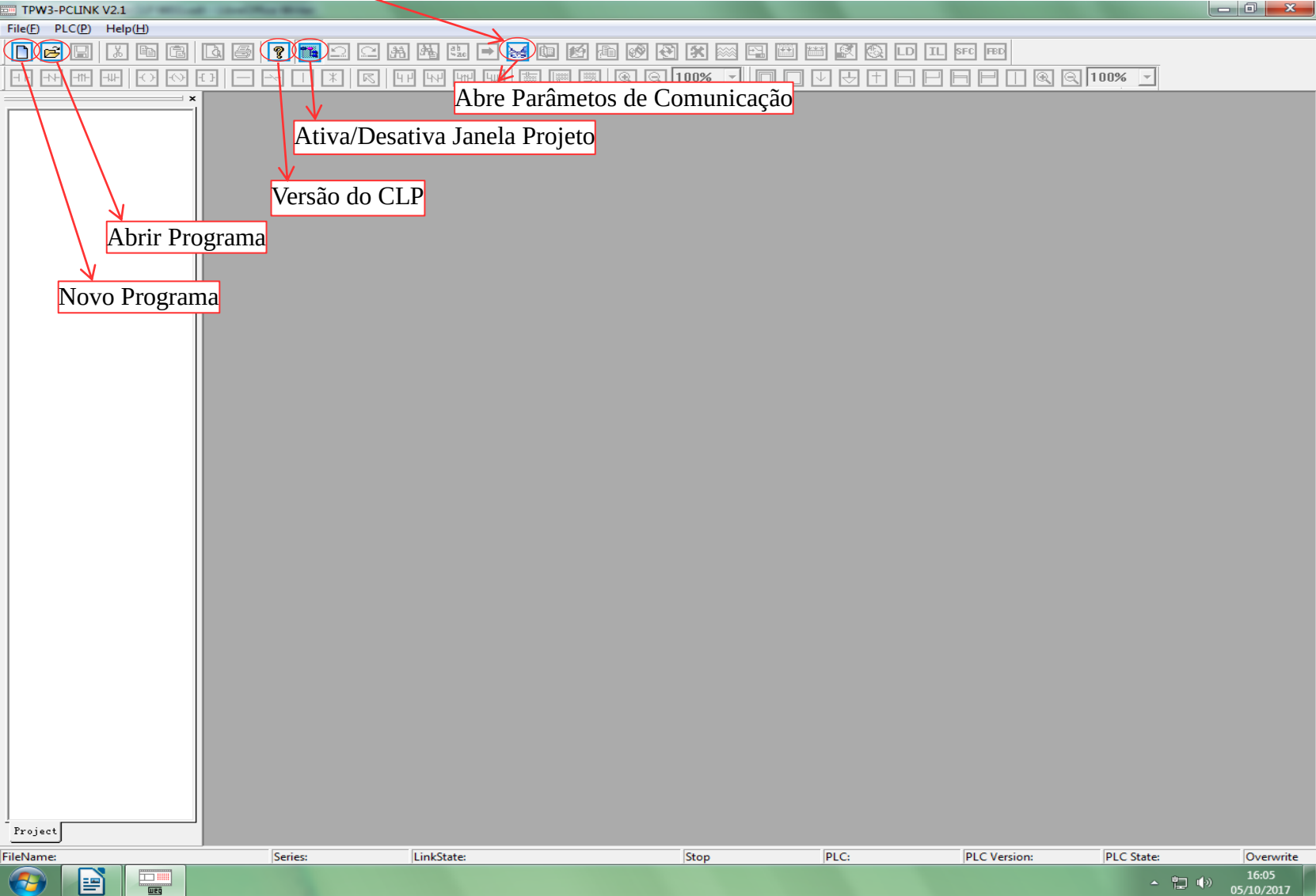


Aba File - TPW03



Ícones Ativos - TPW03

Ícones mais fortes estão ativos



Abre Parâmetros de Comunicação

Ativa/Desativa Janela Projeto

Versão do CLP

Abrir Programa

Novo Programa

Project

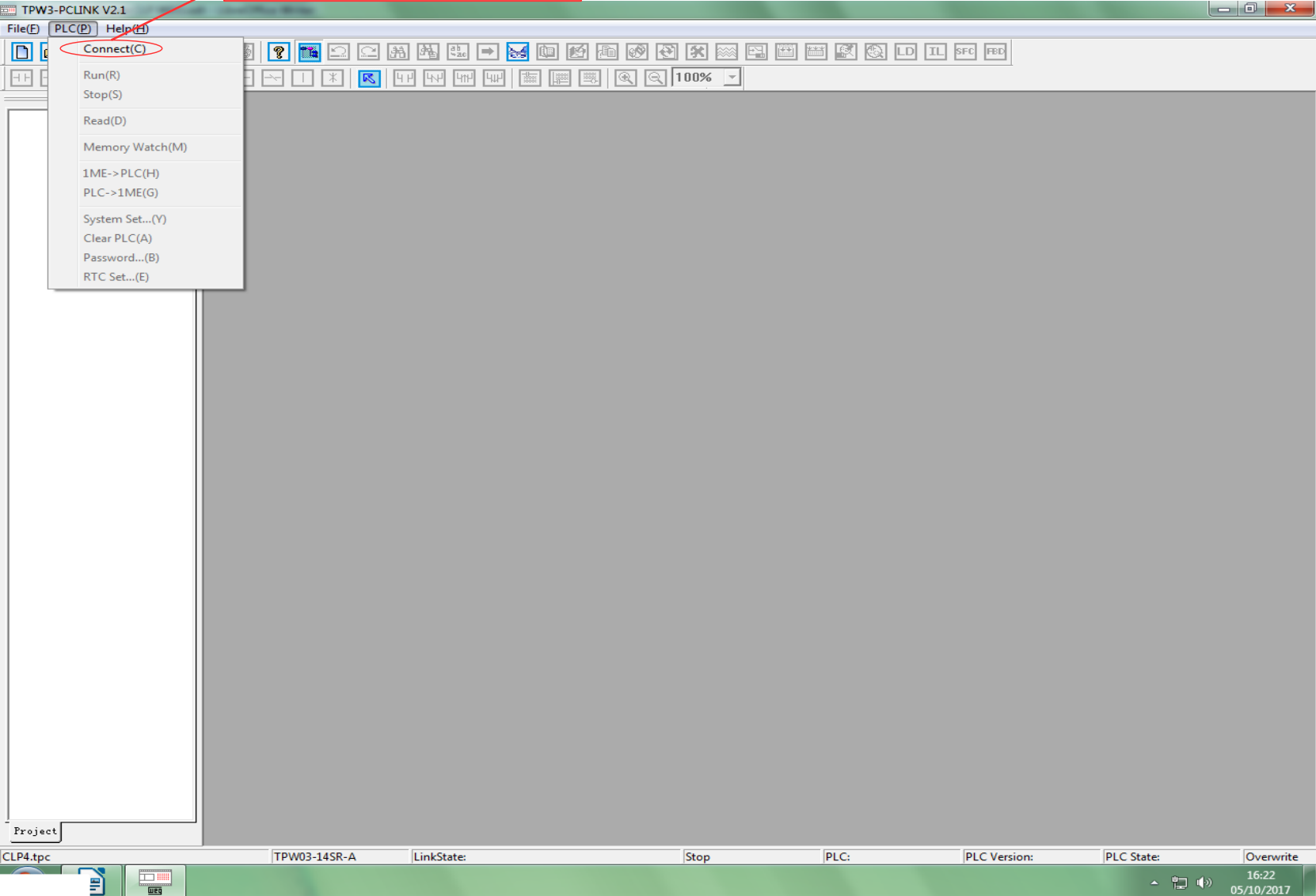
FileName: Series: LinkState: Stop PLC: PLC Version: PLC State: Overwrite

16:05
05/10/2017

Detailed description: The image shows a screenshot of the TPW3-PCLINK V2.1 software interface. The window title is 'TPW3-PCLINK V2.1'. The menu bar includes 'File(F)', 'PLC(P)', and 'Help(H)'. The toolbar contains various icons, with several highlighted by red circles and arrows pointing to text boxes. The text boxes are: 'Ícones mais fortes estão ativos' (pointing to a group of icons), 'Abre Parâmetros de Comunicação' (pointing to a communication icon), 'Ativa/Desativa Janela Projeto' (pointing to a project window icon), 'Versão do CLP' (pointing to a version icon), 'Abrir Programa' (pointing to an open program icon), and 'Novo Programa' (pointing to a new program icon). The main workspace is a large grey area. At the bottom, there is a status bar with fields for 'FileName:', 'Series:', 'LinkState:', 'Stop', 'PLC:', 'PLC Version:', 'PLC State:', and 'Overwrite'. The system tray shows the time '16:05' and date '05/10/2017'.

Aba PLC - TPW03

Abre Parâmetros de Comunicação



TPW3-PCLINK V2.1

File(F) PLC(P) Help(H)

Connect(C)

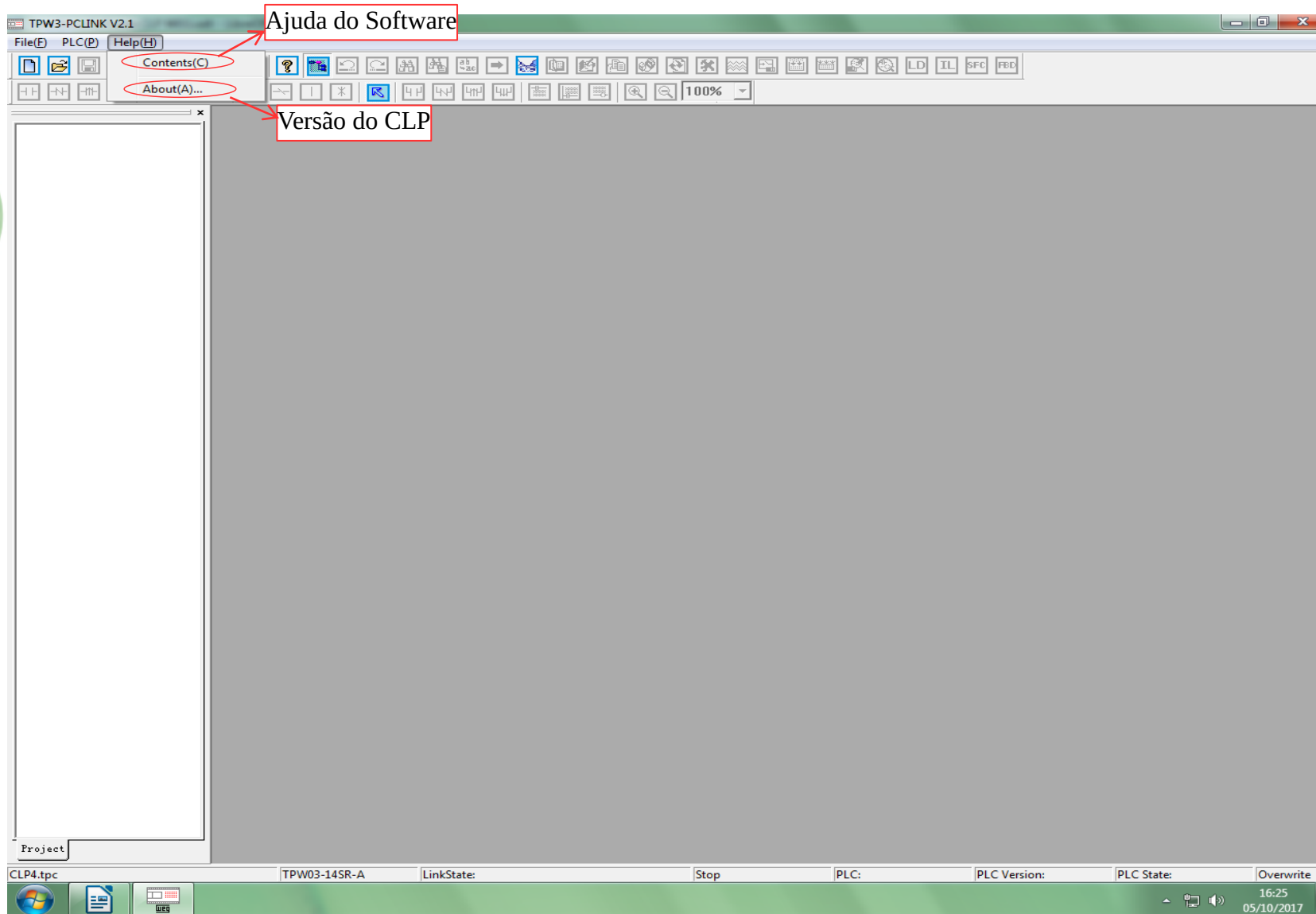
- Run(R)
- Stop(S)
- Read(D)
- Memory Watch(M)
- 1ME->PLC(H)
- PLC->1ME(G)
- System Set...(Y)
- Clear PLC(A)
- Password...(B)
- RTC Set...(E)

Project: CLP4.tpc

TPW03-14SR-A LinkState: Stop PLC: PLC Version: PLC State: Overwrite

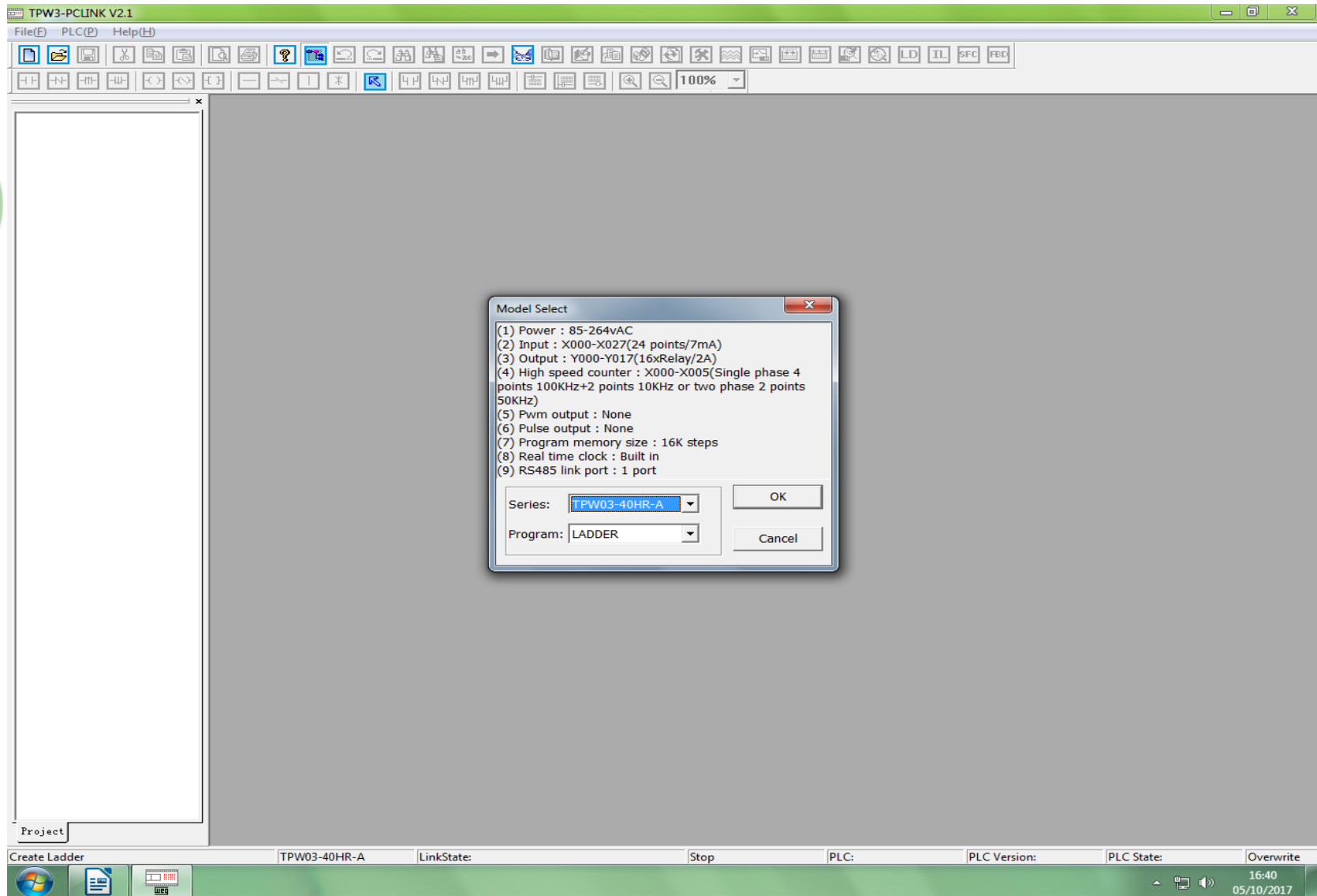
16:22
05/10/2017

Aba Help - TPW03



Novo Programa

Ao Clicar sobre o ícone de novo programa irá aparecer uma caixa de configuração abaixo quanto a escolha da Versão do CLP.



The screenshot displays the TPW3-PCLINK V2.1 software interface. A 'Model Select' dialog box is open in the center, listing the following specifications:

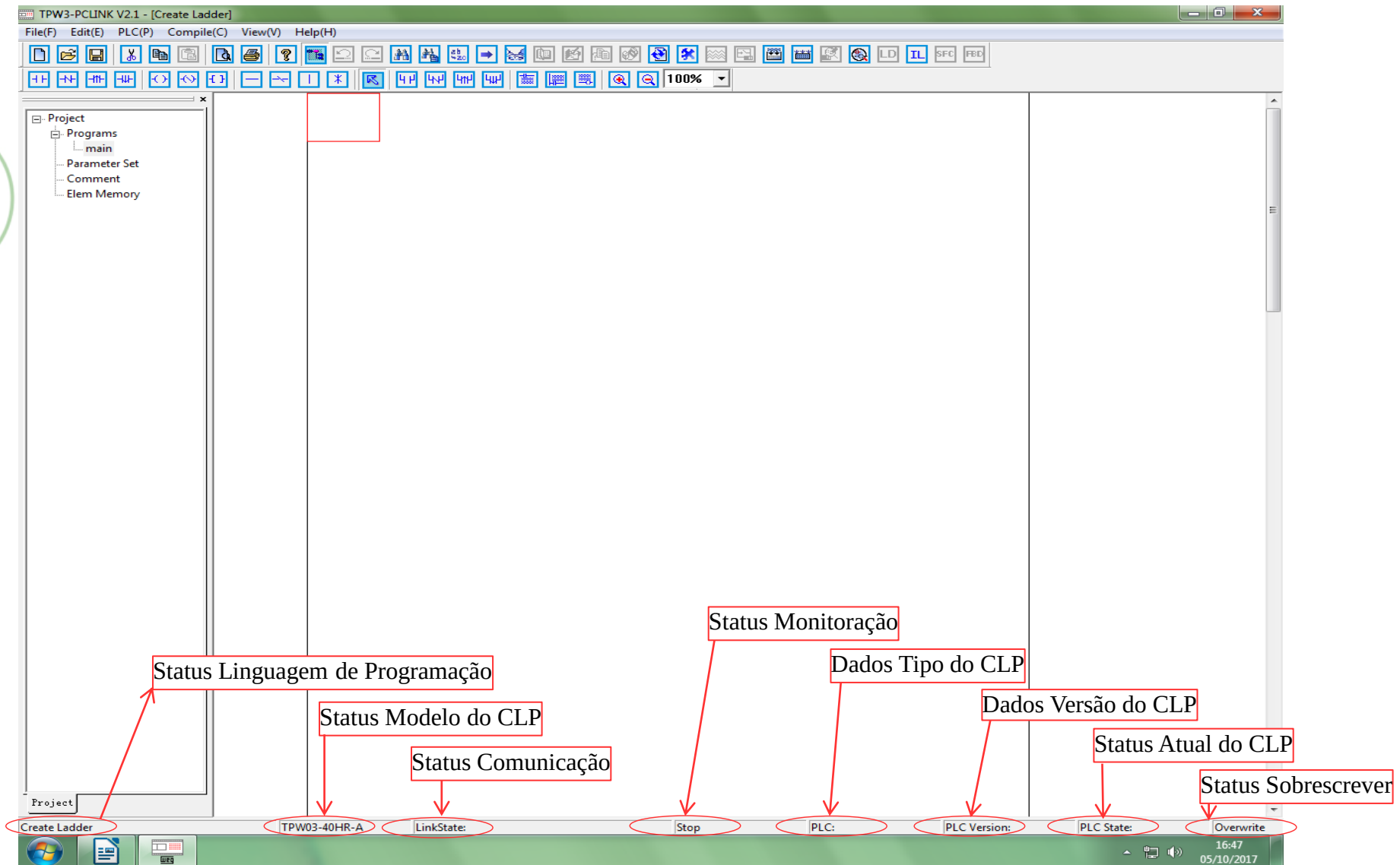
- (1) Power : 85-264vAC
- (2) Input : X000-X027(24 points/7mA)
- (3) Output : Y000-Y017(16xRelay/2A)
- (4) High speed counter : X000-X005(Single phase 4 points 100KHz+2 points 10KHz or two phase 2 points 50KHz)
- (5) Pwm output : None
- (6) Pulse output : None
- (7) Program memory size : 16K steps
- (8) Real time clock : Built in
- (9) RS485 link port : 1 port

The dialog box includes two dropdown menus: 'Series' set to 'TPW03-40HR-A' and 'Program' set to 'LADDER'. 'OK' and 'Cancel' buttons are also present.

The software interface shows a menu bar (File(F), PLC(P), Help(H)), a toolbar with various icons, and a status bar at the bottom with fields for 'Create Ladder', 'TPW03-40HR-A', 'LinkState:', 'Stop', 'PLC:', 'PLC Version:', 'PLC State:', and 'Overwrite'. The system tray at the bottom right shows the time '16:40' and date '05/10/2017'.

Novo Programa

Ao dar OK após setar o CLP e Linguagem de Programação, aparece a Janela abaixo, bem dizer quase todos os ícones ativos.



Importante, não esqueça de salvar o programa!!!

Continuação da apresentação do Software CLP WEG
TPW03 em Sala.