



Cable ID: 9

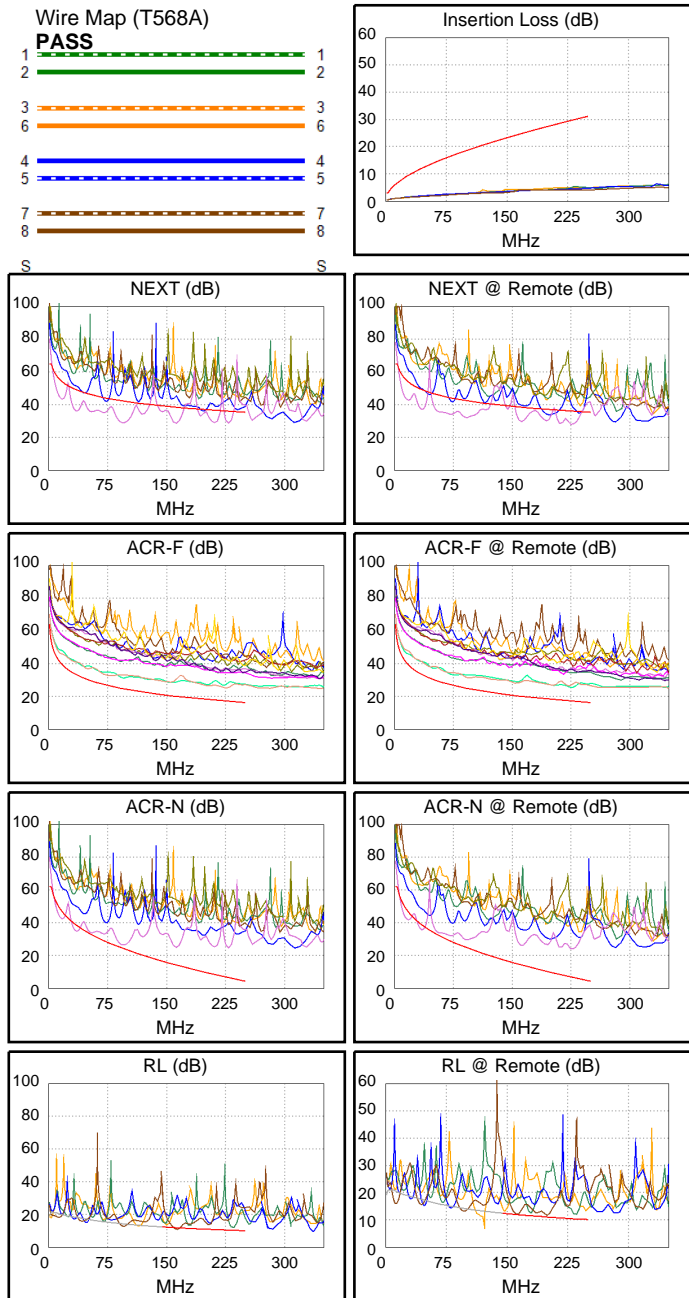
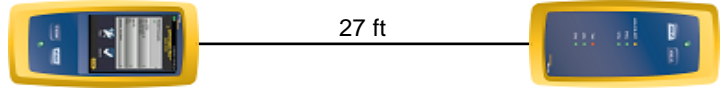
Date / Time: 09/01/2017 08:39:09 PM
Headroom -13.2 dB (NEXT 45-78)
Test Limit: TIA Cat 6 Perm. Link
 Cable Type: Cat 6 U/UTP
 NVP: 69.0%

Operator: CLEBER
 Software Version: V3.0 Build 6
 Limits Version: V3.0
 Calibration Date:
 Main (Module): 06/06/2013
 Remote (Module): 06/04/2013

Test Summary: FAIL

Model: DSX-5000
 Main S/N: 2420012
 Remote S/N: 2420016
 Main Adapter: DSX-PLA004
 Remote Adapter: DSX-PLA004

Length (ft), Limit 295	[Pair 12]	27
Prop. Delay (ns), Limit 498	[Pair 36]	40
Delay Skew (ns), Limit 44	[Pair 36]	1
Resistance (ohms)	[Pair 12]	18.7
Insertion Loss Margin (dB)	[Pair 36]	24.6
Frequency (MHz)	[Pair 36]	235.0
Limit (dB)	[Pair 36]	30.0



	Worst Case Margin		Worst Case Value	
FAIL	MAIN	SR	MAIN	SR
Worst Pair	45-78	45-78	45-78	45-78
NEXT (dB)	-13.2F	-12.3F	-9.8	-8.0
Freq. (MHz)	94.3	34.3	162.0	226.5
Limit (dB)	42.3	49.3	38.4	36.0
Worst Pair	78	78	45	78
PS NEXT (dB)	-10.8F	-10.1F	-7.3	-5.7
Freq. (MHz)	92.5	34.3	162.0	227.5
Limit (dB)	39.9	46.9	35.8	33.4
PASS	MAIN	SR	MAIN	SR
Worst Pair	78-45	45-78	78-45	45-78
ACR-F (dB)	5.3	5.3	8.0	8.4
Freq. (MHz)	13.4	12.8	227.0	227.0
Limit (dB)	41.7	42.1	17.1	17.1
Worst Pair	45	78	45	78
PS ACR-F (dB)	8.0	8.2	10.5	11.0
Freq. (MHz)	13.4	12.8	227.0	225.5
Limit (dB)	38.7	39.1	14.1	14.1
N/A	MAIN	SR	MAIN	SR
Worst Pair	45-78	45-78	45-78	45-78
ACR-N (dB)	-5.2	-5.9	18.1	17.2
Freq. (MHz)	14.3	14.4	228.5	226.5
Limit (dB)	48.8	48.7	6.5	6.7
Worst Pair	45	45	45	45
PS ACR-N (dB)	-2.8	-3.6	20.4	19.6
Freq. (MHz)	15.1	14.0	229.5	227.5
Limit (dB)	45.8	46.6	3.7	3.9
FAIL	MAIN	SR	MAIN	SR
Worst Pair	78	12	78	12
RL (dB)	-1.1F	-5.4F	-1.1	-5.4
Freq. (MHz)	164.0	122.0	164.0	122.0
Limit (dB)	11.9	13.1	11.9	13.1