

**Cable ID: 6**

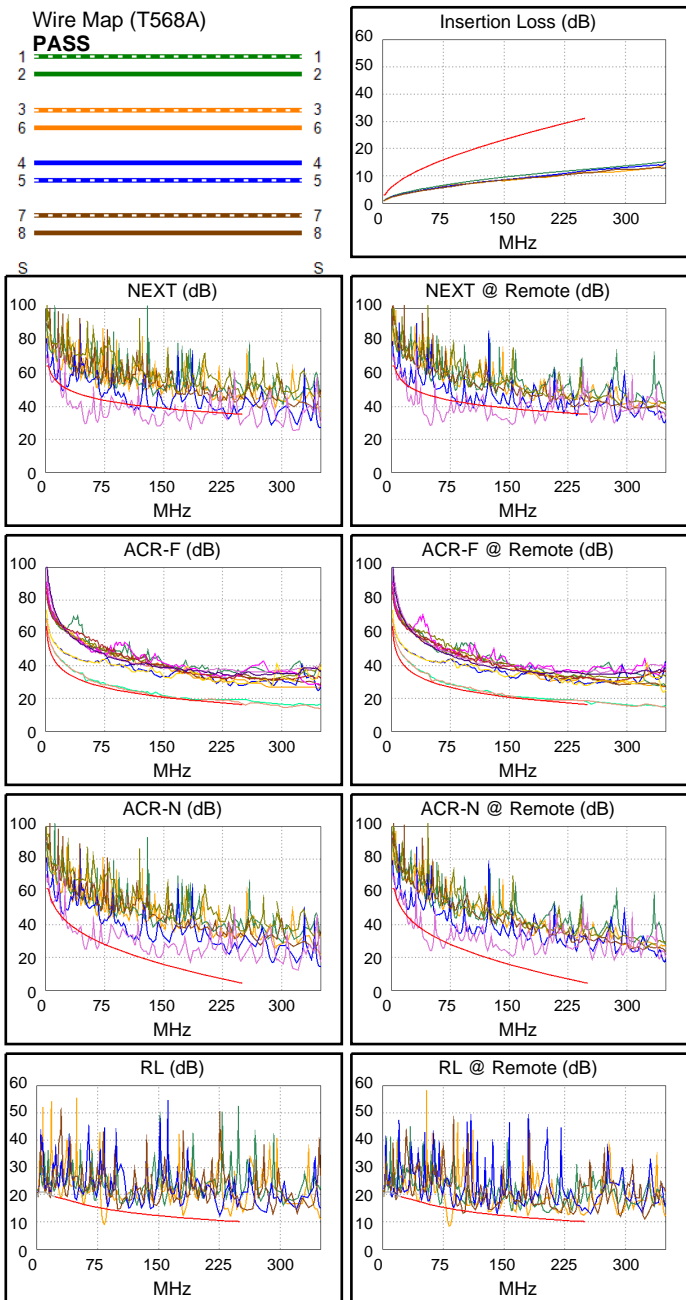
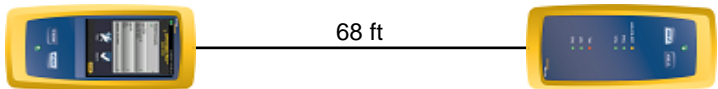
Date / Time: 09/01/2017 08:30:27 PM  
**Headroom -18.3 dB (NEXT 45-78)**  
**Test Limit: TIA Cat 6 Perm. Link**  
 Cable Type: Cat 6 U/UTP  
 NVP: 69.0%

Operator: CLEBER  
 Software Version: V3.0 Build 6  
 Limits Version: V3.0  
 Calibration Date:  
 Main (Module): 06/06/2013  
 Remote (Module): 06/04/2013

**Test Summary: FAIL**

Model: DSX-5000  
 Main S/N: 2420012  
 Remote S/N: 2420016  
 Main Adapter: DSX-PLA004  
 Remote Adapter: DSX-PLA004

Length (ft), Limit 295	[Pair 12]	68
Prop. Delay (ns), Limit 498	[Pair 36]	102
Delay Skew (ns), Limit 44	[Pair 36]	2
Resistance (ohms)	[Pair 36]	9.0
Insertion Loss Margin (dB)	[Pair 36]	17.4
Frequency (MHz)	[Pair 36]	235.5
Limit (dB)	[Pair 36]	30.0



	Worst Case Margin		Worst Case Value	
<b>FAIL</b>	MAIN	SR	MAIN	SR
Worst Pair	45-78	45-78	45-78	45-78
<b>NEXT (dB)</b>	<b>-17.2F</b>	<b>-18.3F</b>	-11.1	-18.3
Freq. (MHz)	50.8	50.0	184.5	50.0
Limit (dB)	46.6	46.7	37.5	46.7
Worst Pair	45	45	45	45
<b>PS NEXT (dB)</b>	<b>-14.7F</b>	<b>-15.8F</b>	-8.5	-15.8
Freq. (MHz)	50.8	50.0	184.5	50.0
Limit (dB)	44.1	44.2	34.9	44.2
<b>FAIL</b>	MAIN	SR	MAIN	SR
Worst Pair	78-45	78-45	78-45	45-78
<b>ACR-F (dB)</b>	<b>-0.3F</b>	0.0*	0.7	1.6
Freq. (MHz)	184.5	168.5	250.0	250.0
Limit (dB)	18.9	19.7	16.2	16.2
Worst Pair	45	45	45	78
<b>PS ACR-F (dB)</b>	2.6	2.9	3.5	4.2
Freq. (MHz)	184.5	169.0	250.0	250.0
Limit (dB)	15.9	16.6	13.2	13.2
<b>N/A</b>	MAIN	SR	MAIN	SR
Worst Pair	45-78	45-78	45-78	45-78
<b>ACR-N (dB)</b>	-9.0	-10.1	5.7	8.6
Freq. (MHz)	50.3	50.0	184.5	184.0
Limit (dB)	33.9	33.9	11.4	11.4
Worst Pair	45	45	45	45
<b>PS ACR-N (dB)</b>	-6.7	-7.9	14.7	10.6
Freq. (MHz)	50.8	50.0	249.0	184.0
Limit (dB)	31.3	31.5	1.7	8.8
<b>FAIL</b>	MAIN	SR	MAIN	SR
Worst Pair	12	12	12	12
<b>RL (dB)</b>	<b>-5.9F</b>	<b>-6.5F</b>	-5.9	-6.5
Freq. (MHz)	83.0	83.0	83.0	83.0
Limit (dB)	14.8	14.8	14.8	14.8

\* Measurement is within the accuracy limits of the instrument.