



Cable ID: 46

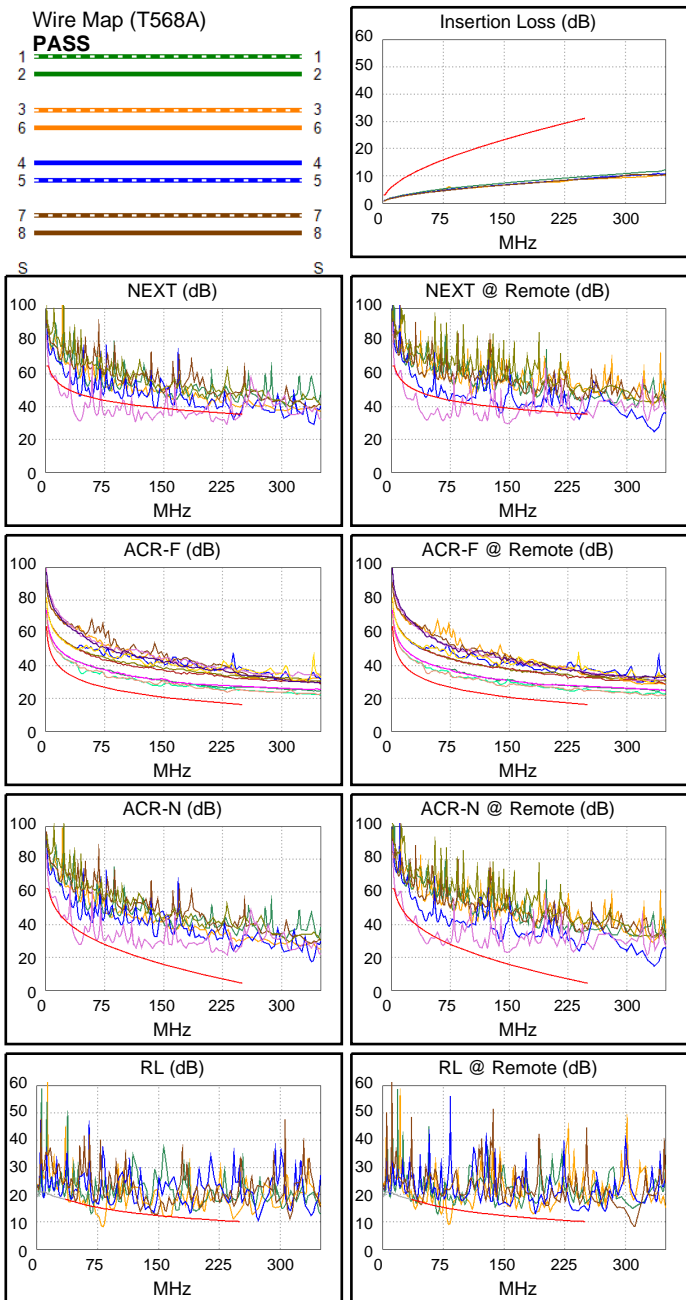
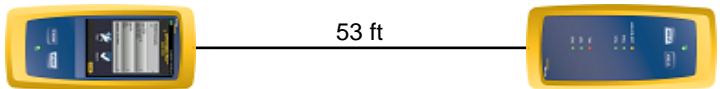
Date / Time: 09/15/2017 07:42:31 PM
Headroom -16.5 dB (NEXT 45-78)
Test Limit: TIA Cat 6 Perm. Link
 Cable Type: Cat 6 U/UTP
 NVP: 69.0%

Operator: CLEBER
 Software Version: V3.0 Build 6
 Limits Version: V3.0
 Calibration Date:
 Main (Module): 06/06/2013
 Remote (Module): 06/04/2013

Test Summary: FAIL

Model: DSX-5000
 Main S/N: 2420012
 Remote S/N: 2420016
 Main Adapter: DSX-PLA004
 Remote Adapter: DSX-PLA004

Length (ft), Limit 295	[Pair 12]	53
Prop. Delay (ns), Limit 498	[Pair 36]	80
Delay Skew (ns), Limit 44	[Pair 36]	2
Resistance (ohms)	[Pair 45]	7.1
Insertion Loss Margin (dB)	[Pair 36]	21.3
Frequency (MHz)	[Pair 36]	250.0
Limit (dB)	[Pair 36]	31.1



	Worst Case Margin		Worst Case Value	
FAIL	MAIN	SR	MAIN	SR
Worst Pair	45-78	45-78	45-78	45-78
NEXT (dB)	-16.5 F	-15.8 F	-6.7	-9.4
Freq. (MHz)	43.0	44.3	230.0	148.5
Limit (dB)	47.8	47.6	35.9	39.0
Worst Pair	78	78	78	78
PS NEXT (dB)	-14.1 F	-13.5 F	-4.4	-7.0
Freq. (MHz)	43.3	44.5	230.0	148.5
Limit (dB)	45.3	45.1	33.3	36.5
PASS	MAIN	SR	MAIN	SR
Worst Pair	45-78	78-45	78-45	45-78
ACR-F (dB)	4.1	4.1	6.9	7.4
Freq. (MHz)	46.3	46.3	232.0	231.5
Limit (dB)	30.9	30.9	16.9	16.9
Worst Pair	78	45	45	45
PS ACR-F (dB)	7.0	6.1	7.9	8.9
Freq. (MHz)	46.3	46.3	233.0	247.0
Limit (dB)	27.9	27.9	13.8	13.3
N/A	MAIN	SR	MAIN	SR
Worst Pair	45-78	45-78	45-78	45-78
ACR-N (dB)	-8.1	-7.2	14.7	7.1
Freq. (MHz)	43.0	44.5	230.0	148.5
Limit (dB)	36.0	35.5	6.3	15.9
Worst Pair	45	78	45	78
PS ACR-N (dB)	-5.7	-4.9	16.9	19.4
Freq. (MHz)	43.0	44.8	230.5	238.0
Limit (dB)	33.5	33.0	3.6	2.8
FAIL	MAIN	SR	MAIN	SR
Worst Pair	12	12	12	12
RL (dB)	-6.9 F	-6.0 F	-6.9	-5.9
Freq. (MHz)	81.3	82.0	81.3	82.3
Limit (dB)	14.9	14.9	14.9	14.8