



Cable ID: 44

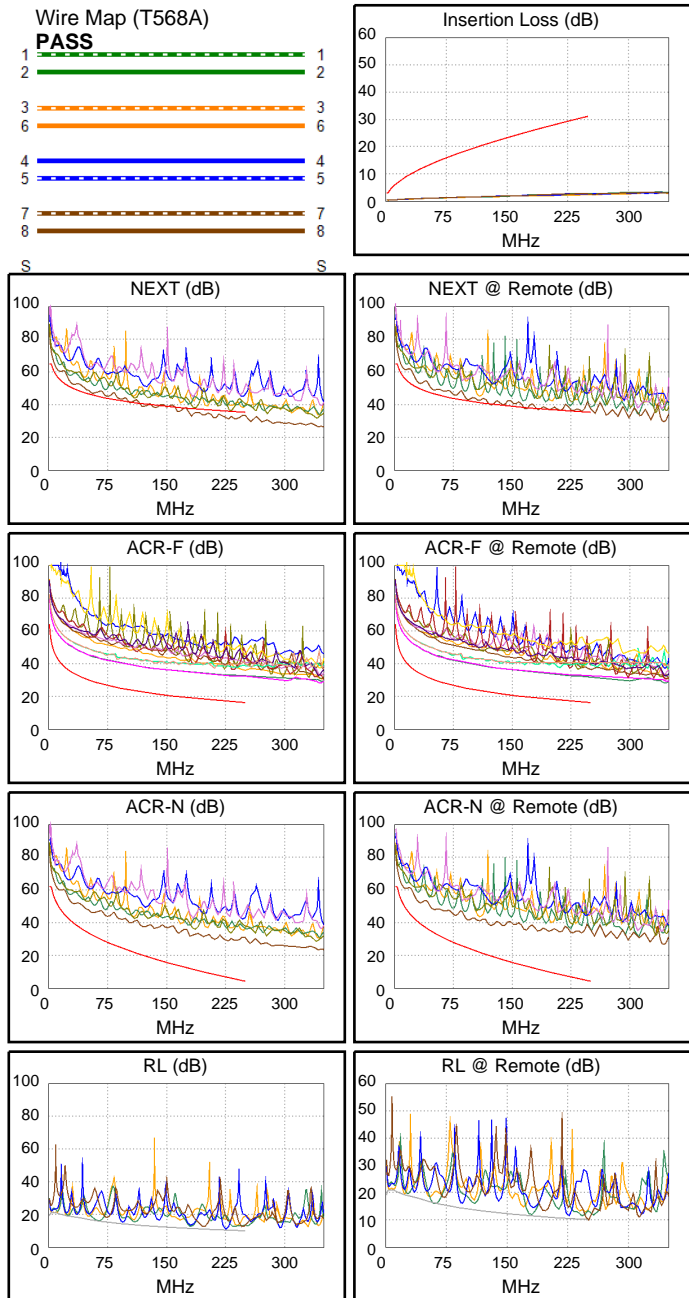
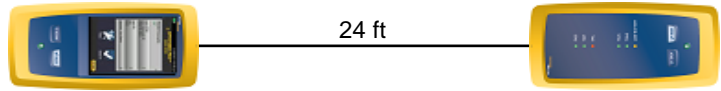
Date / Time: 09/15/2017 07:38:38 PM
Headroom -4.6 dB (NEXT 36-45)
Test Limit: TIA Cat 6 Perm. Link
 Cable Type: Cat 6 U/UTP
 NVP: 69.0%

Operator: CLEBER
 Software Version: V3.0 Build 6
 Limits Version: V3.0
 Calibration Date:
 Main (Module): 06/06/2013
 Remote (Module): 06/04/2013

Test Summary: FAIL

Model: DSX-5000
 Main S/N: 2420012
 Remote S/N: 2420016
 Main Adapter: DSX-PLA004
 Remote Adapter: DSX-PLA004

Length (ft), Limit 295	[Pair 36]	24
Prop. Delay (ns), Limit 498	[Pair 45]	36
Delay Skew (ns), Limit 44	[Pair 12]	1
Resistance (ohms)	[Pair 12]	1.4
Insertion Loss Margin (dB)	[Pair 36]	27.9
Frequency (MHz)	[Pair 36]	247.5
Limit (dB)	[Pair 36]	30.9



Worst Case Margin Worst Case Value

FAIL	MAIN	SR	MAIN	SR
Worst Pair	36-45	36-45	36-45	36-45
NEXT (dB)	-4.6F	-1.0F	-4.4	0.3
Freq. (MHz)	229.0	167.5	238.0	239.0
Limit (dB)	36.0	38.2	35.7	35.7
Worst Pair	36	45	36	45
PS NEXT (dB)	-3.4F	0.4*	-3.4	1.5
Freq. (MHz)	230.0	167.0	230.0	250.0
Limit (dB)	33.3	35.6	33.3	32.7

PASS	MAIN	SR	MAIN	SR
Worst Pair	12-45	12-45	45-12	12-45
ACR-F (dB)	15.0	14.9	15.1	14.9
Freq. (MHz)	55.8	242.5	246.5	242.5
Limit (dB)	29.3	16.5	16.4	16.5
Worst Pair	45	45	12	45
PS ACR-F (dB)	16.2	16.3	17.3	16.4
Freq. (MHz)	87.5	238.0	241.0	238.5
Limit (dB)	22.3	13.7	13.5	13.6

N/A	MAIN	SR	MAIN	SR
Worst Pair	36-45	36-45	36-45	36-45
ACR-N (dB)	9.4	10.0	22.4	28.3
Freq. (MHz)	8.9	8.4	228.5	239.0
Limit (dB)	53.4	54.0	6.5	5.4
Worst Pair	36	45	36	45
PS ACR-N (dB)	10.3	11.5	23.5	30.2
Freq. (MHz)	4.1	4.0	230.0	250.0
Limit (dB)	58.0	58.3	3.7	1.6

PASS	MAIN	SR	MAIN	SR
Worst Pair	36	36	45	78
RL (dB)	2.9	1.4	0.4	-0.1
Freq. (MHz)	245.5	244.5	226.0	250.0
Limit (dB)	10.1	10.1	10.5	10.0

* Measurement is within the accuracy limits of the instrument.