



**Cable ID: 43**

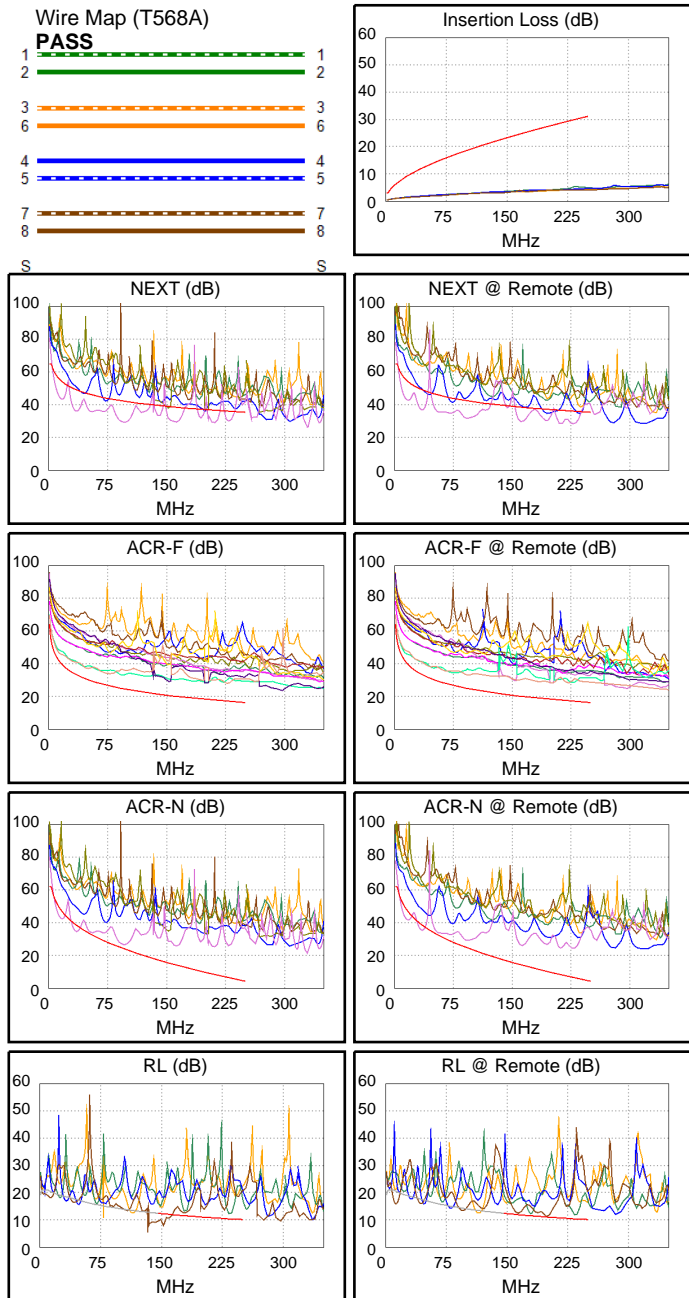
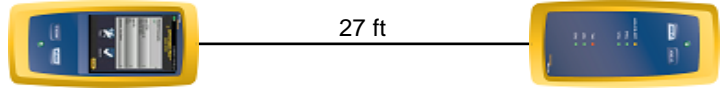
Date / Time: 09/15/2017 07:36:48 PM  
**Headroom -13.1 dB (NEXT 45-78)**  
**Test Limit: TIA Cat 6 Perm. Link**  
 Cable Type: Cat 6 U/UTP  
 NVP: 69.0%

Operator: CLEBER  
 Software Version: V3.0 Build 6  
 Limits Version: V3.0  
 Calibration Date:  
 Main (Module): 06/06/2013  
 Remote (Module): 06/04/2013

**Test Summary: FAIL**

Model: DSX-5000  
 Main S/N: 2420012  
 Remote S/N: 2420016  
 Main Adapter: DSX-PLA004  
 Remote Adapter: DSX-PLA004

Length (ft), Limit 295	[Pair 12]	27
Prop. Delay (ns), Limit 498	[Pair 36]	40
Delay Skew (ns), Limit 44	[Pair 36]	1
Resistance (ohms)	[Pair 12]	3.9
Insertion Loss Margin (dB)	[Pair 36]	24.8
Frequency (MHz)	[Pair 36]	236.0
Limit (dB)	[Pair 36]	30.1



	Worst Case Margin		Worst Case Value	
<b>FAIL</b>	MAIN	SR	MAIN	SR
Worst Pair	45-78	45-78	45-78	45-78
<b>NEXT (dB)</b>	<b>-13.1 F</b>	<b>-12.6 F</b>	-7.5	-8.4
Freq. (MHz)	35.5	34.8	211.0	212.0
Limit (dB)	49.1	49.2	36.5	36.5
Worst Pair	78	78	78	78
<b>PS NEXT (dB)</b>	<b>-10.8 F</b>	<b>-10.4 F</b>	-5.2	-6.2
Freq. (MHz)	34.0	34.8	212.0	212.0
Limit (dB)	47.0	46.8	33.9	33.9
<b>PASS</b>	MAIN	SR	MAIN	SR
Worst Pair	78-45	45-78	78-45	45-78
<b>ACR-F (dB)</b>	4.8	4.8	10.9	11.3
Freq. (MHz)	12.5	12.5	228.0	228.0
Limit (dB)	42.3	42.3	17.0	17.0
Worst Pair	45	78	45	78
<b>PS ACR-F (dB)</b>	7.3	7.8	13.0	13.0
Freq. (MHz)	12.5	12.5	228.0	228.0
Limit (dB)	39.3	39.3	14.0	14.0
<b>N/A</b>	MAIN	SR	MAIN	SR
Worst Pair	45-78	45-78	45-78	45-78
<b>ACR-N (dB)</b>	-5.4	-6.1	17.0	17.8
Freq. (MHz)	14.4	14.5	211.0	228.5
Limit (dB)	48.7	48.6	8.3	6.5
Worst Pair	45	45	78	78
<b>PS ACR-N (dB)</b>	-3.0	-3.8	19.4	20.0
Freq. (MHz)	14.4	14.0	212.0	229.5
Limit (dB)	46.3	46.6	5.6	3.7
<b>FAIL</b>	MAIN	SR	MAIN	SR
Worst Pair	78	12	78	78
<b>RL (dB)</b>	<b>-5.8 F</b>	<b>-1.1 F</b>	-5.8	0.2
Freq. (MHz)	155.5	115.5	155.5	200.5
Limit (dB)	12.1	13.4	12.1	11.0