



Cable ID: 40

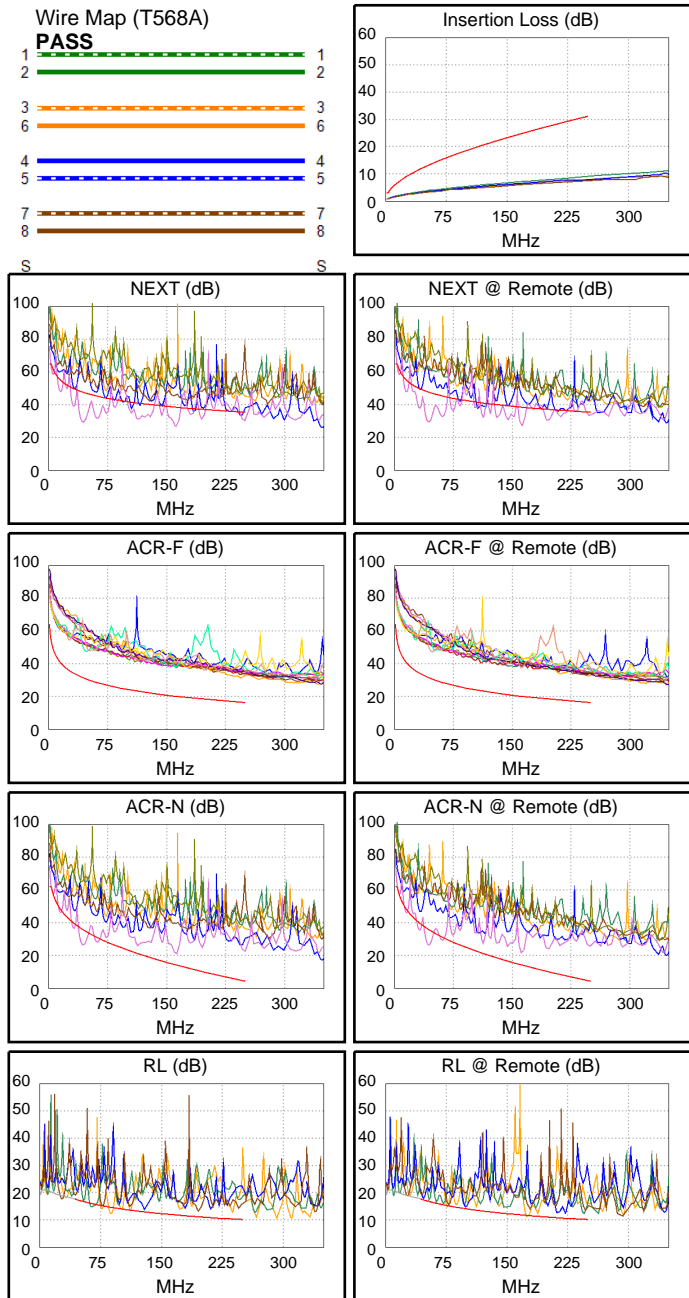
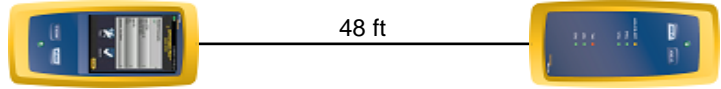
Date / Time: 09/15/2017 07:31:48 PM
Headroom -18.4 dB (NEXT 45-78)
Test Limit: TIA Cat 6 Perm. Link
 Cable Type: Cat 6 U/UTP
 NVP: 69.0%

Operator: CLEBER
 Software Version: V3.0 Build 6
 Limits Version: V3.0
 Calibration Date:
 Main (Module): 06/06/2013
 Remote (Module): 06/04/2013

Test Summary: FAIL

Model: DSX-5000
 Main S/N: 2420012
 Remote S/N: 2420016
 Main Adapter: DSX-PLA004
 Remote Adapter: DSX-PLA004

Length (ft), Limit 295	[Pair 12]	48
Prop. Delay (ns), Limit 498	[Pair 36]	72
Delay Skew (ns), Limit 44	[Pair 36]	2
Resistance (ohms)	[Pair 12]	27.4
Insertion Loss Margin (dB)	[Pair 36]	21.6
Frequency (MHz)	[Pair 36]	245.0
Limit (dB)	[Pair 36]	30.7



	Worst Case Margin		Worst Case Value	
FAIL	MAIN	SR	MAIN	SR
Worst Pair	45-78	45-78	45-78	45-78
NEXT (dB)	-18.3F	-18.4F	-11.6	-11.1
Freq. (MHz)	43.5	43.0	162.5	162.5
Limit (dB)	47.7	47.8	38.4	38.4
Worst Pair	45	45	45	78
PS NEXT (dB)	-15.9F	-15.9F	-9.1	-8.6
Freq. (MHz)	43.3	43.3	162.0	162.5
Limit (dB)	45.3	45.3	35.8	35.8
PASS	MAIN	SR	MAIN	SR
Worst Pair	12-36	12-36	12-36	12-36
ACR-F (dB)	14.9	16.0	14.9	16.2
Freq. (MHz)	245.0	210.5	245.0	247.0
Limit (dB)	16.4	17.7	16.4	16.3
Worst Pair	36	36	36	36
PS ACR-F (dB)	14.7	15.3	14.8	15.4
Freq. (MHz)	243.5	246.5	244.5	247.0
Limit (dB)	13.5	13.4	13.4	13.3
N/A	MAIN	SR	MAIN	SR
Worst Pair	45-78	45-78	45-78	45-78
ACR-N (dB)	-9.5	-9.6	6.9	7.4
Freq. (MHz)	43.3	43.0	162.5	162.5
Limit (dB)	35.9	36.0	14.1	14.1
Worst Pair	45	45	45	45
PS ACR-N (dB)	-7.1	-7.2	8.8	9.5
Freq. (MHz)	43.5	43.0	162.0	162.5
Limit (dB)	33.4	33.5	11.6	11.5
FAIL	MAIN	SR	MAIN	SR
Worst Pair	12	12	12	12
RL (dB)	-2.4F	-0.7F	-2.3	-0.7
Freq. (MHz)	88.0	175.5	88.3	175.5
Limit (dB)	14.6	11.6	14.5	11.6