

**Cable ID: 4**

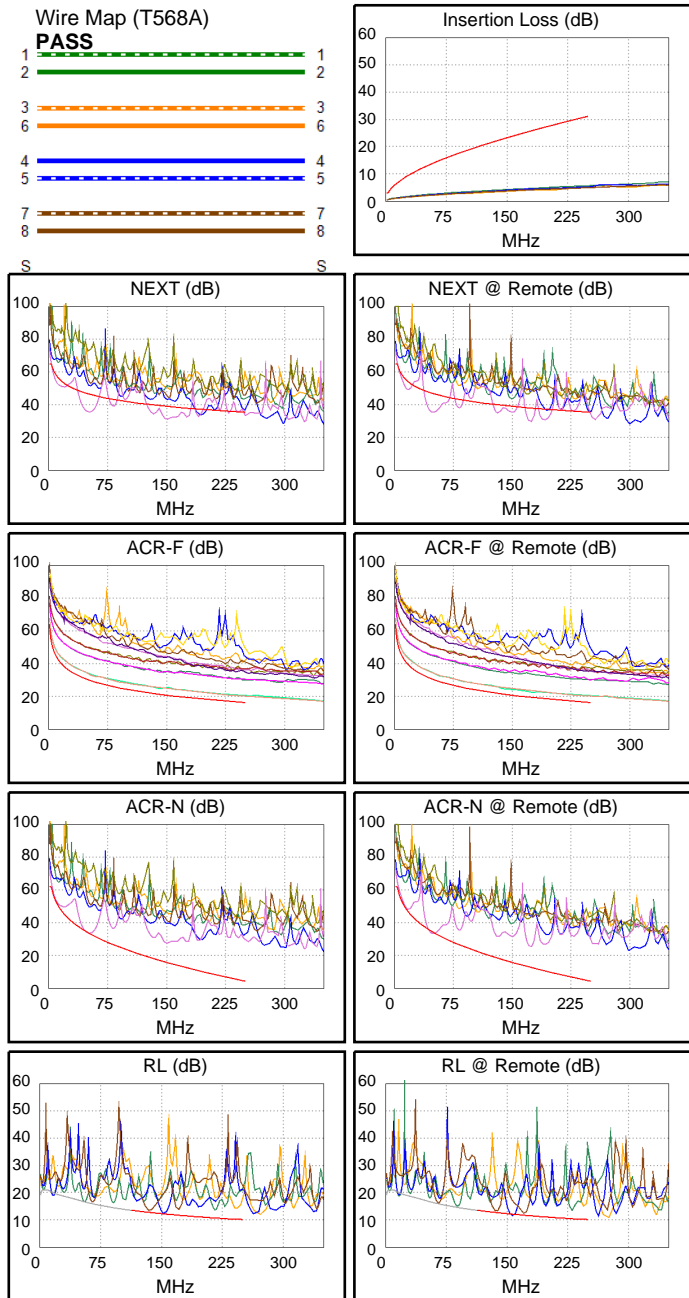
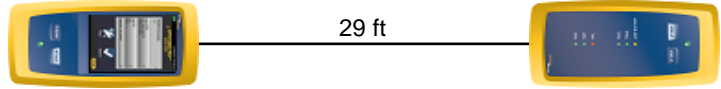
Date / Time: 09/01/2017 08:27:25 PM  
**Headroom -11.6 dB (NEXT 45-78)**  
**Test Limit: TIA Cat 6 Perm. Link**  
 Cable Type: Cat 6 U/UTP  
 NVP: 69.0%

Operator: CLEBER  
 Software Version: V3.0 Build 6  
 Limits Version: V3.0  
 Calibration Date:  
 Main (Module): 06/06/2013  
 Remote (Module): 06/04/2013

**Test Summary: FAIL**

Model: DSX-5000  
 Main S/N: 2420012  
 Remote S/N: 2420016  
 Main Adapter: DSX-PLA004  
 Remote Adapter: DSX-PLA004

Length (ft), Limit 295	[Pair 12]	29
Prop. Delay (ns), Limit 498	[Pair 36]	43
Delay Skew (ns), Limit 44	[Pair 12]	0
Resistance (ohms)	[Pair 12]	4.0
Insertion Loss Margin (dB)	[Pair 36]	24.0
Frequency (MHz)	[Pair 36]	231.5
Limit (dB)	[Pair 36]	29.8



	Worst Case Margin		Worst Case Value	
<b>FAIL</b>	MAIN	SR	MAIN	SR
Worst Pair	45-78	45-78	45-78	45-78
<b>NEXT (dB)</b>	<b>-11.0F</b>	<b>-11.6F</b>	-8.0	-8.3
Freq. (MHz)	51.0	48.3	150.0	173.5
Limit (dB)	46.6	47.0	39.0	37.9
Worst Pair	45	45	78	78
<b>PS NEXT (dB)</b>	<b>-8.6F</b>	<b>-9.1F</b>	-4.1	-5.9
Freq. (MHz)	51.3	48.3	192.0	173.5
Limit (dB)	44.1	44.5	34.6	35.3
<b>PASS</b>	MAIN	SR	MAIN	SR
Worst Pair	78-45	45-78	78-45	78-45
<b>ACR-F (dB)</b>	3.0	3.1	3.8	4.1
Freq. (MHz)	178.5	176.5	250.0	250.0
Limit (dB)	19.2	19.3	16.2	16.2
Worst Pair	45	45	45	45
<b>PS ACR-F (dB)</b>	5.7	5.9	6.2	6.5
Freq. (MHz)	178.5	140.0	250.0	250.0
Limit (dB)	16.2	18.3	13.2	13.2
<b>N/A</b>	MAIN	SR	MAIN	SR
Worst Pair	45-78	45-78	45-78	45-78
<b>ACR-N (dB)</b>	-0.2	-1.1	11.7	12.5
Freq. (MHz)	50.3	47.0	150.0	173.5
Limit (dB)	33.9	34.8	15.7	12.7
Worst Pair	45	45	78	78
<b>PS ACR-N (dB)</b>	2.1	1.3	18.6	14.9
Freq. (MHz)	49.3	47.5	192.0	173.5
Limit (dB)	31.7	32.2	7.9	10.1
<b>FAIL</b>	MAIN	SR	MAIN	SR
Worst Pair	45	45	45	45
<b>RL (dB)</b>	0.2*	<b>-0.6F</b>	0.3	-0.5
Freq. (MHz)	153.0	156.5	154.0	157.5
Limit (dB)	12.2	12.1	12.1	12.0

\* Measurement is within the accuracy limits of the instrument.