



**Cable ID: 39**

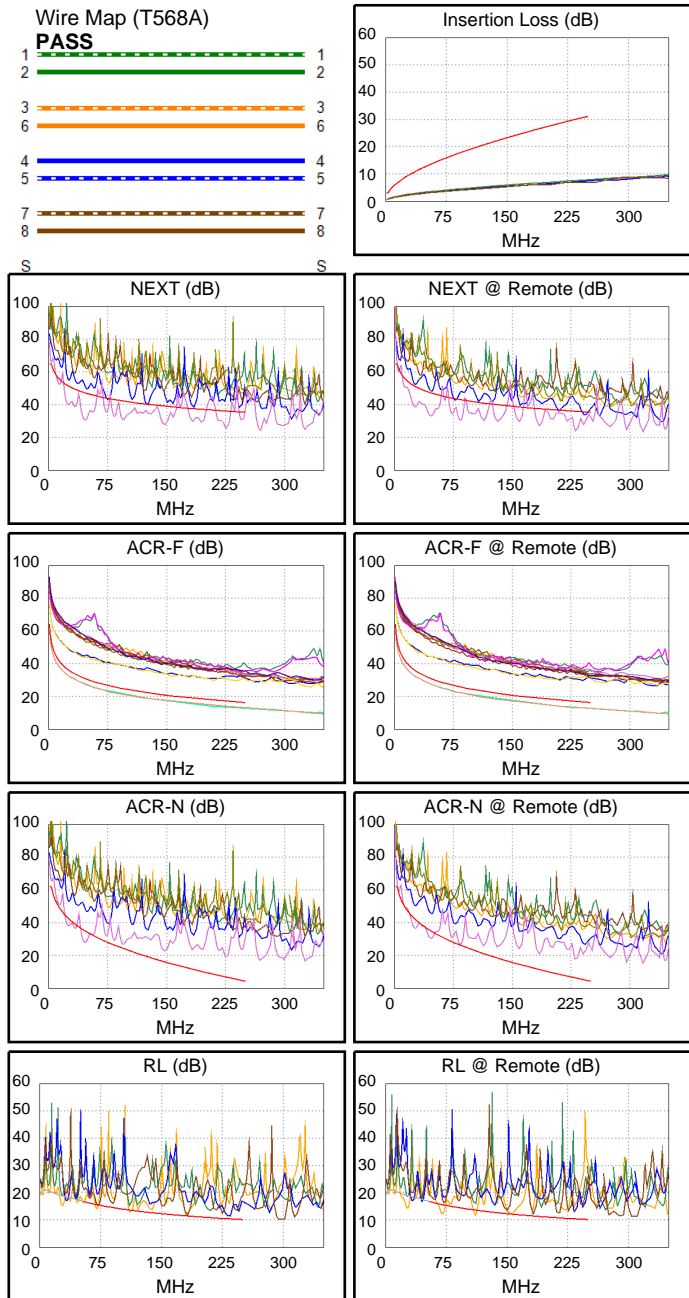
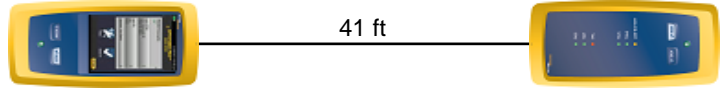
Date / Time: 09/15/2017 07:29:53 PM  
**Headroom -16.6 dB (NEXT 45-78)**  
**Test Limit: TIA Cat 6 Perm. Link**  
 Cable Type: Cat 6 U/UTP  
 NVP: 69.0%

Operator: CLEBER  
 Software Version: V3.0 Build 6  
 Limits Version: V3.0  
 Calibration Date:  
 Main (Module): 06/06/2013  
 Remote (Module): 06/04/2013

**Test Summary: FAIL**

Model: DSX-5000  
 Main S/N: 2420012  
 Remote S/N: 2420016  
 Main Adapter: DSX-PLA004  
 Remote Adapter: DSX-PLA004

Length (ft), Limit 295	[Pair 45]	41
Prop. Delay (ns), Limit 498	[Pair 36]	63
Delay Skew (ns), Limit 44	[Pair 36]	2
Resistance (ohms)	[Pair 36]	5.7
Insertion Loss Margin (dB)	[Pair 36]	22.9
Frequency (MHz)	[Pair 36]	243.0
Limit (dB)	[Pair 36]	30.6



	Worst Case Margin		Worst Case Value	
<b>FAIL</b>	MAIN	SR	MAIN	SR
Worst Pair	45-78	45-78	45-78	45-78
<b>NEXT (dB)</b>	<b>-16.6 F</b>	<b>-14.2 F</b>	-10.4	-12.0
Freq. (MHz)	46.3	45.5	226.0	232.0
Limit (dB)	47.2	47.4	36.1	35.9
Worst Pair	45	78	78	78
<b>PS NEXT (dB)</b>	<b>-14.2 F</b>	<b>-11.8 F</b>	-7.8	-9.4
Freq. (MHz)	46.3	46.3	226.0	232.0
Limit (dB)	44.8	44.8	33.4	33.2
<b>FAIL</b>	MAIN	SR	MAIN	SR
Worst Pair	78-45	78-45	78-45	78-45
<b>ACR-F (dB)</b>	<b>-4.0 F</b>	<b>-4.6 F</b>	-4.0	-4.6
Freq. (MHz)	248.0	233.0	248.0	233.0
Limit (dB)	16.3	16.8	16.3	16.8
Worst Pair	45	45	45	45
<b>PS ACR-F (dB)</b>	<b>-1.0 F</b>	<b>-1.6 F</b>	-1.0	-1.6
Freq. (MHz)	248.0	233.0	248.0	233.0
Limit (dB)	13.3	13.8	13.3	13.8
<b>N/A</b>	MAIN	SR	MAIN	SR
Worst Pair	45-78	45-78	45-78	45-78
<b>ACR-N (dB)</b>	-7.1	-5.7	11.9	11.1
Freq. (MHz)	46.3	25.6	226.5	232.0
Limit (dB)	35.0	42.4	6.7	6.1
Worst Pair	45	78	78	45
<b>PS ACR-N (dB)</b>	-4.9	-3.5	14.5	12.9
Freq. (MHz)	45.8	25.5	226.5	232.0
Limit (dB)	32.7	40.0	4.0	3.5
<b>FAIL</b>	MAIN	SR	MAIN	SR
Worst Pair	12	12	45	12
<b>RL (dB)</b>	<b>-1.5 F</b>	<b>-3.4 F</b>	0.8	-1.7
Freq. (MHz)	70.8	70.3	233.5	111.5
Limit (dB)	15.5	15.5	10.3	13.5