

Cable ID: 38

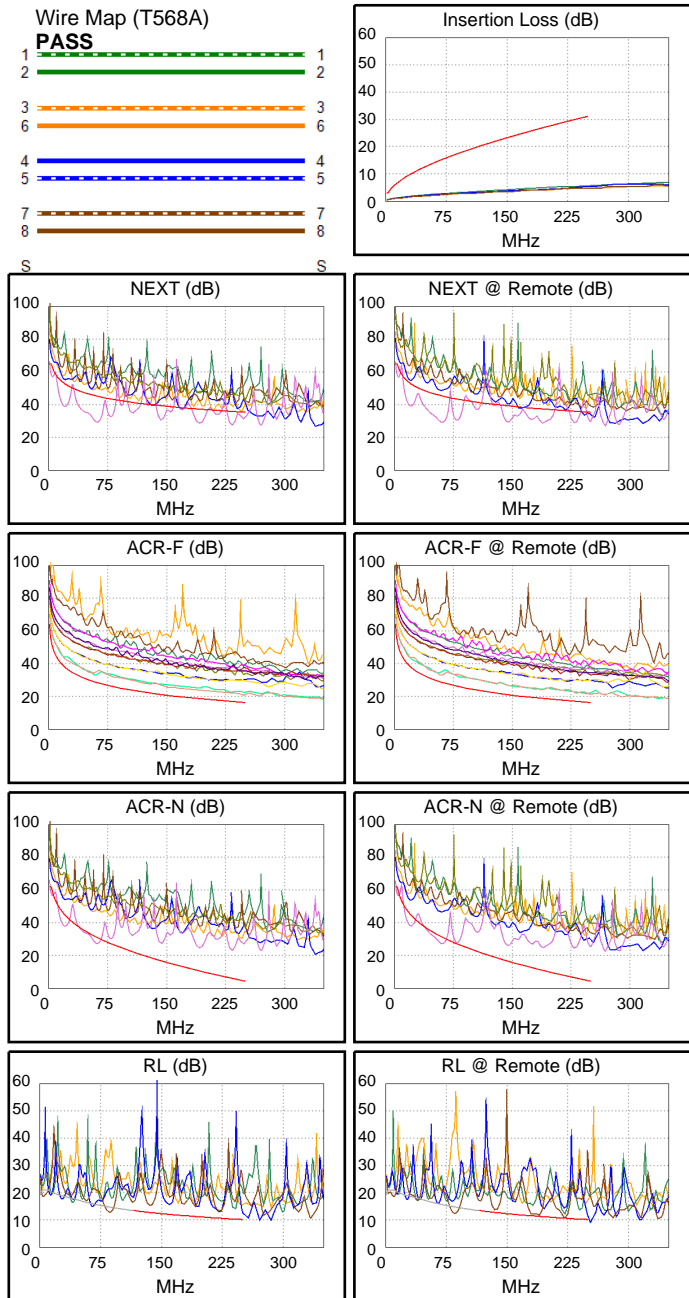
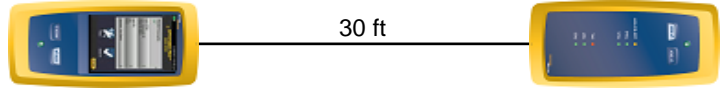
Date / Time: 09/15/2017 07:28:08 PM
Headroom -16.1 dB (NEXT 45-78)
Test Limit: TIA Cat 6 Perm. Link
 Cable Type: Cat 6 U/UTP
 NVP: 69.0%

Operator: CLEBER
 Software Version: V3.0 Build 6
 Limits Version: V3.0
 Calibration Date:
 Main (Module): 06/06/2013
 Remote (Module): 06/04/2013

Test Summary: FAIL

Model: DSX-5000
 Main S/N: 2420012
 Remote S/N: 2420016
 Main Adapter: DSX-PLA004
 Remote Adapter: DSX-PLA004

Length (ft), Limit 295	[Pair 45]	30
Prop. Delay (ns), Limit 498	[Pair 12]	45
Delay Skew (ns), Limit 44	[Pair 12]	1
Resistance (ohms)	[Pair 78]	4.2
Insertion Loss Margin (dB)	[Pair 36]	24.5
Frequency (MHz)	[Pair 36]	240.0
Limit (dB)	[Pair 36]	30.4



	Worst Case Margin		Worst Case Value	
FAIL	MAIN	SR	MAIN	SR
Worst Pair	45-78	45-78	45-78	45-78
NEXT (dB)	-15.9F	-16.1F	-8.3	-8.6
Freq. (MHz)	61.5	60.5	233.5	189.0
Limit (dB)	45.3	45.4	35.8	37.3
Worst Pair	45	78	78	78
PS NEXT (dB)	-13.4F	-13.7F	-5.8	-4.4
Freq. (MHz)	61.5	59.0	232.5	250.0
Limit (dB)	42.8	43.1	33.2	32.7
PASS	MAIN	SR	MAIN	SR
Worst Pair	45-78	78-45	78-45	78-45
ACR-F (dB)	4.4	4.3	4.4	5.1
Freq. (MHz)	59.0	59.8	248.0	250.0
Limit (dB)	28.8	28.7	16.3	16.2
Worst Pair	78	45	45	78
PS ACR-F (dB)	6.7	7.2	7.1	7.7
Freq. (MHz)	59.0	59.8	248.0	248.0
Limit (dB)	25.8	25.7	13.3	13.3
N/A	MAIN	SR	MAIN	SR
Worst Pair	45-78	45-78	45-78	45-78
ACR-N (dB)	-7.5	-7.3	17.2	18.3
Freq. (MHz)	18.3	18.9	233.5	230.5
Limit (dB)	46.2	45.8	5.9	6.2
Worst Pair	45	45	45	45
PS ACR-N (dB)	-5.2	-5.0	19.5	22.0
Freq. (MHz)	18.3	18.9	234.0	250.0
Limit (dB)	43.8	43.4	3.2	1.6
PASS	MAIN	SR	MAIN	SR
Worst Pair	45	78	45	78
RL (dB)	2.1	0.1*	2.6	0.2
Freq. (MHz)	222.5	221.0	250.0	222.5
Limit (dB)	10.5	10.6	10.0	10.5

* Measurement is within the accuracy limits of the instrument.