



Cable ID: 37

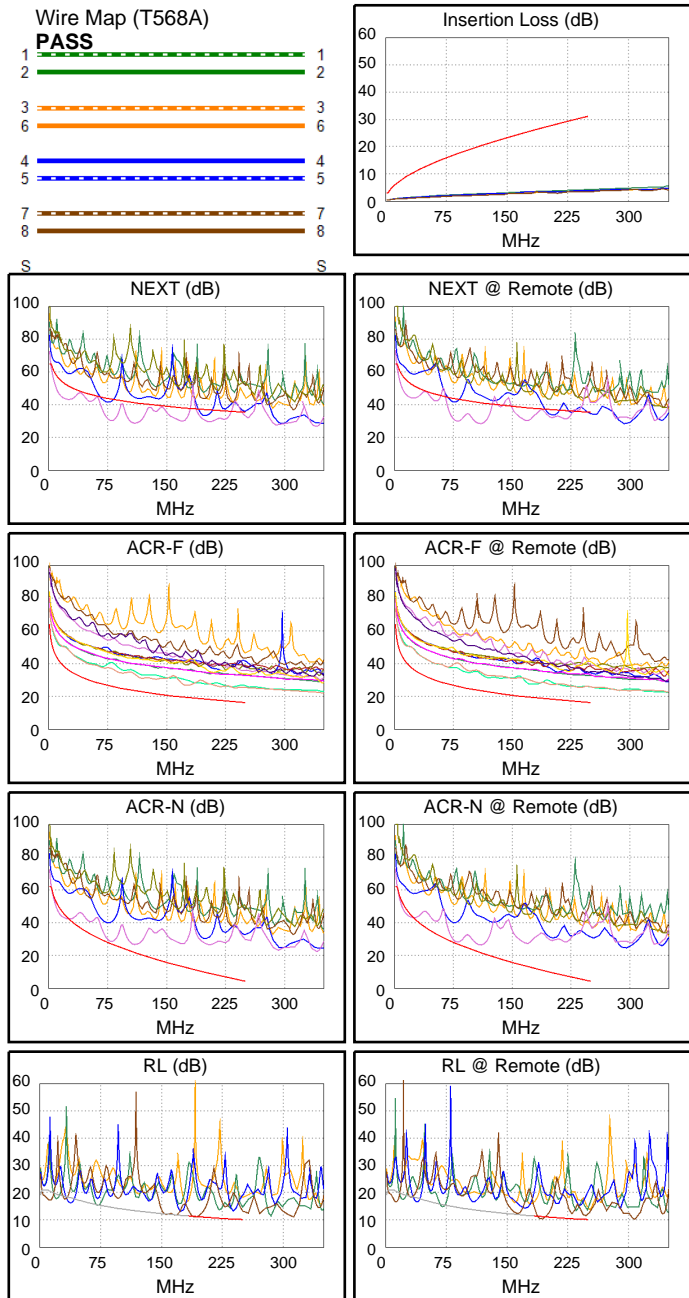
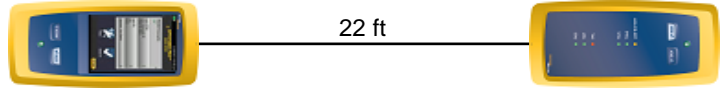
Date / Time: 09/15/2017 07:25:26 PM
Headroom -13.5 dB (NEXT 45-78)
Test Limit: TIA Cat 6 Perm. Link
 Cable Type: Cat 6 U/UTP
 NVP: 69.0%

Operator: CLEBER
 Software Version: V3.0 Build 6
 Limits Version: V3.0
 Calibration Date:
 Main (Module): 06/06/2013
 Remote (Module): 06/04/2013

Test Summary: FAIL

Model: DSX-5000
 Main S/N: 2420012
 Remote S/N: 2420016
 Main Adapter: DSX-PLA004
 Remote Adapter: DSX-PLA004

Length (ft), Limit 295	[Pair 78]	22
Prop. Delay (ns), Limit 498	[Pair 36]	33
Delay Skew (ns), Limit 44	[Pair 12]	1
Resistance (ohms)	[Pair 12]	3.1
Insertion Loss Margin (dB)	[Pair 36]	25.8
Frequency (MHz)	[Pair 36]	237.0
Limit (dB)	[Pair 36]	30.2



	Worst Case Margin		Worst Case Value	
FAIL	MAIN	SR	MAIN	SR
Worst Pair	45-78	45-78	45-78	45-78
NEXT (dB)	-13.2F	-13.5F	-12.4	-12.7
Freq. (MHz)	80.3	79.5	110.5	110.5
Limit (dB)	43.4	43.5	41.1	41.1
Worst Pair	78	78	78	78
PS NEXT (dB)	-11.0F	-11.3F	-5.9	-10.3
Freq. (MHz)	80.3	79.3	204.0	110.5
Limit (dB)	40.9	41.0	34.2	38.6
PASS	MAIN	SR	MAIN	SR
Worst Pair	78-45	45-78	78-45	78-45
ACR-F (dB)	7.4	8.0	8.4	8.7
Freq. (MHz)	175.5	173.5	238.0	238.0
Limit (dB)	19.3	19.4	16.7	16.7
Worst Pair	45	45	45	45
PS ACR-F (dB)	9.7	10.8	10.6	10.8
Freq. (MHz)	175.5	238.0	238.0	238.0
Limit (dB)	16.3	13.7	13.7	13.7
N/A	MAIN	SR	MAIN	SR
Worst Pair	45-78	45-78	45-78	45-78
ACR-N (dB)	-3.6	-3.3	17.5	4.9
Freq. (MHz)	14.4	12.4	205.5	110.5
Limit (dB)	48.7	50.2	9.0	21.5
Worst Pair	45	78	78	45
PS ACR-N (dB)	-1.3	-1.1	18.7	7.0
Freq. (MHz)	13.8	11.8	204.0	110.5
Limit (dB)	46.8	48.4	6.5	19.0
FAIL	MAIN	SR	MAIN	SR
Worst Pair	78	78	78	78
RL (dB)	-0.3F	-1.0F	-0.3	-1.0
Freq. (MHz)	192.5	193.0	192.5	193.0
Limit (dB)	11.2	11.1	11.2	11.1