



Cable ID: 36

Date / Time: 09/15/2017 07:23:38 PM

Headroom 4.4 dB (NEXT 45-78)

Test Limit: TIA Cat 6 Perm. Link

Cable Type: Cat 6 U/UTP

NVP: 69.0%

Operator: CLEBER

Software Version: V3.0 Build 6

Limits Version: V3.0

Calibration Date:

Main (Module): 06/06/2013

Remote (Module): 06/04/2013

Test Summary: PASS

Model: DSX-5000

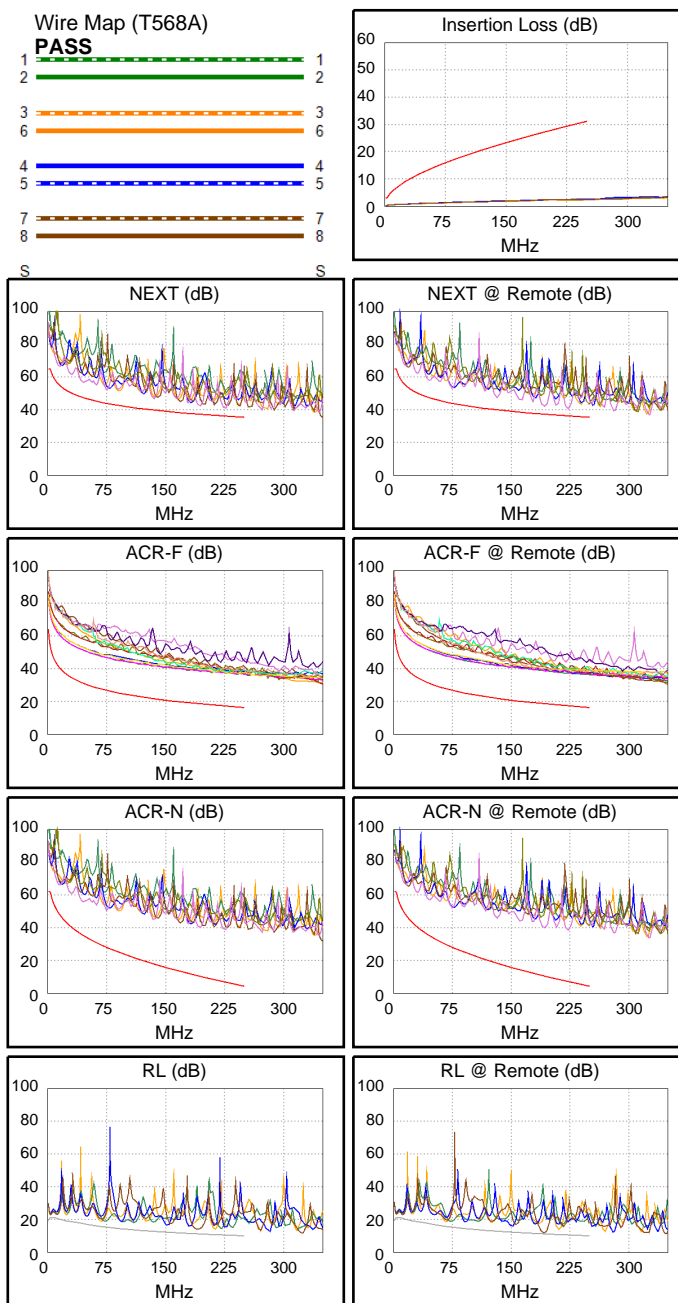
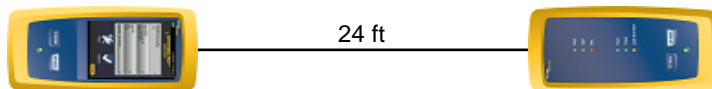
Main S/N: 2420012

Remote S/N: 2420016

Main Adapter: DSX-PLA004

Remote Adapter: DSX-PLA004

| | | |
|-----------------------------|-----------|-------|
| Length (ft), Limit 295 | [Pair 36] | 24 |
| Prop. Delay (ns), Limit 498 | [Pair 45] | 36 |
| Delay Skew (ns), Limit 44 | [Pair 12] | 1 |
| Resistance (ohms) | [Pair 12] | 1.5 |
| | | |
| Insertion Loss Margin (dB) | [Pair 36] | 28.2 |
| Frequency (MHz) | [Pair 36] | 246.5 |
| Limit (dB) | [Pair 36] | 30.8 |



Worst Case Margin Worst Case Value

| PASS | MAIN | SR | MAIN | SR |
|---------------------|-------|-------|-------|-------|
| Worst Pair | 45-78 | 45-78 | 45-78 | 45-78 |
| NEXT (dB) | 4.9 | 4.4 | 4.9 | 4.4 |
| Freq. (MHz) | 226.0 | 222.5 | 226.0 | 222.5 |
| Limit (dB) | 36.1 | 36.2 | 36.1 | 36.2 |
| Worst Pair | 45 | 78 | 45 | 78 |
| PS NEXT (dB) | 5.2 | 6.4 | 5.2 | 6.5 |
| Freq. (MHz) | 227.0 | 222.0 | 227.0 | 223.0 |
| Limit (dB) | 33.4 | 33.6 | 33.4 | 33.5 |

| PASS | MAIN | SR | MAIN | SR |
|----------------------|-------|-------|-------|-------|
| Worst Pair | 12-45 | 12-45 | 45-12 | 12-45 |
| ACR-F (dB) | 19.8 | 19.8 | 20.1 | 19.9 |
| Freq. (MHz) | 209.5 | 140.0 | 250.0 | 250.0 |
| Limit (dB) | 17.8 | 21.3 | 16.2 | 16.2 |
| Worst Pair | 12 | 12 | 12 | 12 |
| PS ACR-F (dB) | 19.3 | 19.1 | 19.3 | 19.4 |
| Freq. (MHz) | 242.5 | 243.5 | 242.5 | 250.0 |
| Limit (dB) | 13.5 | 13.5 | 13.5 | 13.2 |

| N/A | MAIN | SR | MAIN | SR |
|----------------------|-------|-------|-------|-------|
| Worst Pair | 12-36 | 45-78 | 45-78 | 45-78 |
| ACR-N (dB) | 17.1 | 18.0 | 32.1 | 31.4 |
| Freq. (MHz) | 4.0 | 13.1 | 226.0 | 222.5 |
| Limit (dB) | 60.6 | 49.6 | 6.7 | 7.1 |
| Worst Pair | 12 | 12 | 45 | 45 |
| PS ACR-N (dB) | 17.1 | 17.9 | 32.3 | 33.4 |
| Freq. (MHz) | 4.0 | 3.9 | 227.0 | 223.0 |
| Limit (dB) | 58.3 | 58.5 | 4.0 | 4.4 |

| N/A | MAIN | SR | MAIN | SR |
|----------------|------|-------|-------|-------|
| Worst Pair | 12 | 78 | 78 | 78 |
| RL (dB) | 1.8 | 0.5 | 2.7 | 0.5 |
| Freq. (MHz) | 3.8 | 192.0 | 190.5 | 192.0 |
| Limit (dB) | 21.0 | 11.2 | 11.2 | 11.2 |

Compliant Network Standards:
 10BASE-T 100BASE-TX 100BASE-T4
 1000BASE-T ATM-25 ATM-51
 ATM-155 100VG-AnyLan TR-4
 TR-16 Active TR-16 Passive