



Cable ID: 35

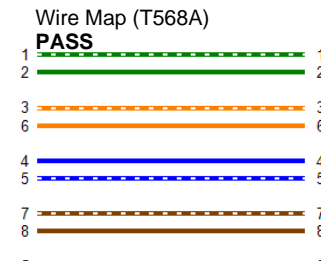
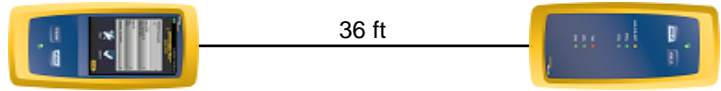
Date / Time: 09/15/2017 07:16:06 PM
Headroom -15.3 dB (NEXT 45-78)
Test Limit: TIA Cat 6 Perm. Link
 Cable Type: Cat 6 U/UTP
 NVP: 69.0%

Operator: CLEBER
 Software Version: V3.0 Build 6
 Limits Version: V3.0
 Calibration Date:
 Main (Module): 06/06/2013
 Remote (Module): 06/04/2013

Test Summary: FAIL

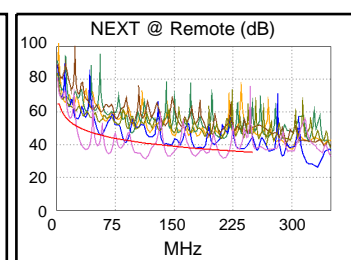
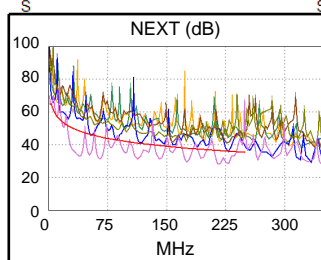
Model: DSX-5000
 Main S/N: 2420012
 Remote S/N: 2420016
 Main Adapter: DSX-PLA004
 Remote Adapter: DSX-PLA004

Length (ft), Limit 295	[Pair 12]	36
Prop. Delay (ns), Limit 498	[Pair 36]	54
Delay Skew (ns), Limit 44	[Pair 36]	1
Resistance (ohms)	[Pair 78]	87.4
Insertion Loss Margin (dB)	[Pair 78]	-0.1 F
Frequency (MHz)	[Pair 78]	1.0
Limit (dB)	[Pair 78]	3.0

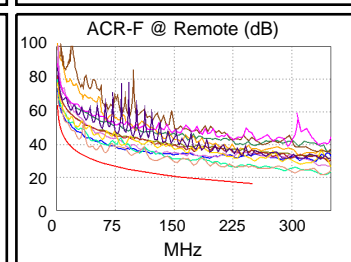
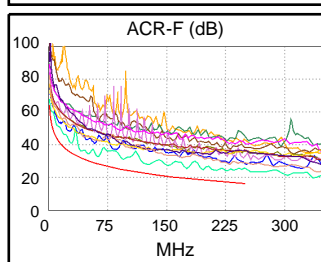


Worst Case Margin Worst Case Value

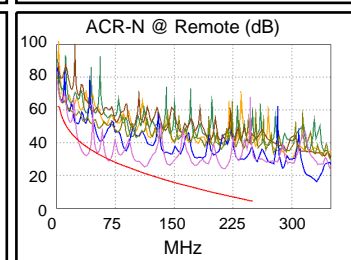
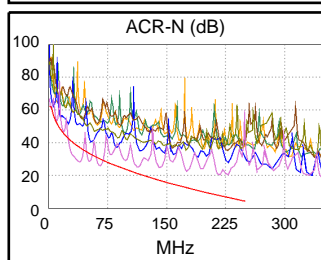
FAIL	MAIN	SR	MAIN	SR
Worst Pair	45-78	45-78	45-78	45-78
NEXT (dB)	-15.3 F	-11.7 F	-8.6	-9.7
Freq. (MHz)	39.3	37.3	216.5	113.0
Limit (dB)	48.4	48.8	36.4	41.0
Worst Pair	45	45	78	78
PS NEXT (dB)	-12.9 F	-9.3 F	-6.0	-7.2
Freq. (MHz)	39.0	36.5	227.5	113.0
Limit (dB)	46.0	46.5	33.4	38.4



PASS	MAIN	SR	MAIN	SR
Worst Pair	45-78	78-45	45-78	45-78
ACR-F (dB)	4.1	6.7	6.9	9.1
Freq. (MHz)	50.3	50.3	227.0	230.0
Limit (dB)	30.2	30.2	17.1	17.0
Worst Pair	78	45	78	78
PS ACR-F (dB)	5.9	9.0	8.5	10.6
Freq. (MHz)	1.0	1.0	227.5	230.0
Limit (dB)	61.2	61.2	14.0	14.0



N/A	MAIN	SR	MAIN	SR
Worst Pair	45-78	45-78	45-78	45-78
ACR-N (dB)	-9.2	-5.7	13.5	15.9
Freq. (MHz)	37.8	36.5	227.5	213.5
Limit (dB)	37.7	38.1	6.6	8.1
Worst Pair	78	78	78	78
PS ACR-N (dB)	-6.7	-3.3	15.5	18.3
Freq. (MHz)	38.5	35.5	227.5	213.5
Limit (dB)	35.0	36.0	3.9	5.5



FAIL	MAIN	SR	MAIN	SR
Worst Pair	78	78	45	78
RL (dB)	-9.2 F	-11.2 F	0.1	-1.4
Freq. (MHz)	2.4	3.1	250.0	212.0
Limit (dB)	20.6	21.0	10.0	10.7

