



Cable ID: 34

Date / Time: 09/15/2017 07:15:28 PM

Headroom 0.8 dB (NEXT 36-45)

Test Limit: TIA Cat 6 Perm. Link

Cable Type: Cat 6 U/UTP

NVP: 69.0%

Operator: CLEBER

Software Version: V3.0 Build 6

Limits Version: V3.0

Calibration Date:

Main (Module): 06/06/2013

Remote (Module): 06/04/2013

Test Summary: PASS

Model: DSX-5000

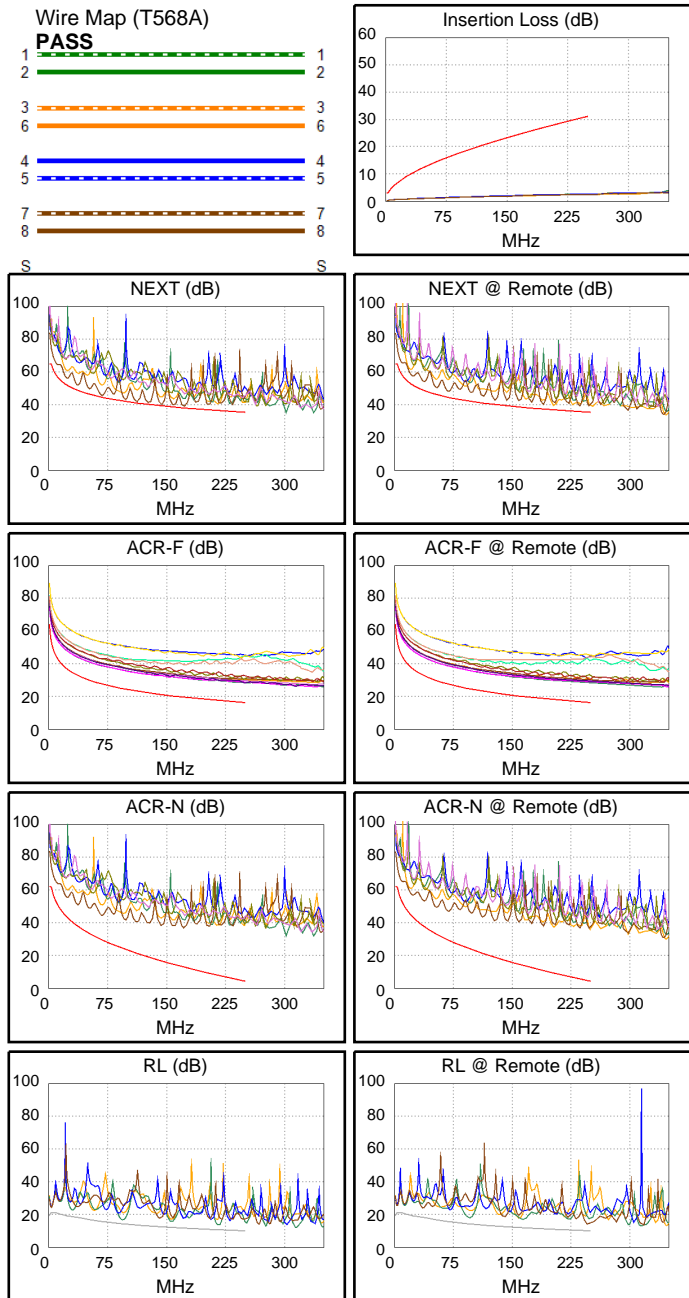
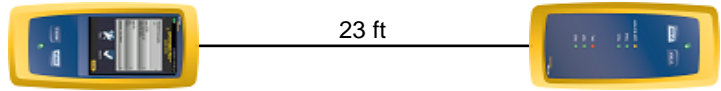
Main S/N: 2420012

Remote S/N: 2420016

Main Adapter: DSX-PLA004

Remote Adapter: DSX-PLA004

Length (ft), Limit 295	[Pair 36]	23
Prop. Delay (ns), Limit 498	[Pair 45]	35
Delay Skew (ns), Limit 44	[Pair 12]	1
Resistance (ohms)	[Pair 36]	1.5
Insertion Loss Margin (dB)	[Pair 36]	28.3
Frequency (MHz)	[Pair 36]	250.0
Limit (dB)	[Pair 36]	31.1



Worst Case Margin Worst Case Value

PASS	MAIN	SR	MAIN	SR
Worst Pair	36-45	12-36	36-45	12-36
NEXT (dB)	0.8	2.7	1.0	3.2
Freq. (MHz)	144.0	203.0	172.0	250.0
Limit (dB)	39.3	36.8	38.0	35.3
Worst Pair	45	36	45	36
PS NEXT (dB)	1.8	2.5	3.4	3.1
Freq. (MHz)	172.0	204.5	233.0	250.0
Limit (dB)	35.4	34.2	33.2	32.7

PASS	MAIN	SR	MAIN	SR
Worst Pair	45-12	12-45	45-12	12-45
ACR-F (dB)	10.7	10.7	11.8	11.6
Freq. (MHz)	2.8	2.8	248.0	250.0
Limit (dB)	55.4	55.4	16.3	16.2
Worst Pair	12	12	36	36
PS ACR-F (dB)	11.2	11.3	12.1	12.2
Freq. (MHz)	1.0	1.3	250.0	250.0
Limit (dB)	61.2	59.3	13.2	13.2

N/A	MAIN	SR	MAIN	SR
Worst Pair	36-45	36-45	36-45	12-36
ACR-N (dB)	11.8	11.4	24.0	31.5
Freq. (MHz)	7.8	6.8	172.0	250.0
Limit (dB)	54.7	56.0	12.9	4.2
Worst Pair	36	36	45	36
PS ACR-N (dB)	12.9	13.4	30.7	31.4
Freq. (MHz)	22.3	6.8	233.0	250.0
Limit (dB)	41.6	53.6	3.4	1.6

N/A	MAIN	SR	MAIN	SR
Worst Pair	36	36	36	78
RL (dB)	2.4	3.8	2.6	3.9
Freq. (MHz)	94.3	96.3	216.0	246.5
Limit (dB)	14.3	14.2	10.7	10.1

Compliant Network Standards:
 10BASE-T 100BASE-TX 100BASE-T4
 1000BASE-T ATM-25 ATM-51
 ATM-155 100VG-AnyLan TR-4
 TR-16 Active TR-16 Passive