



Cable ID: 33

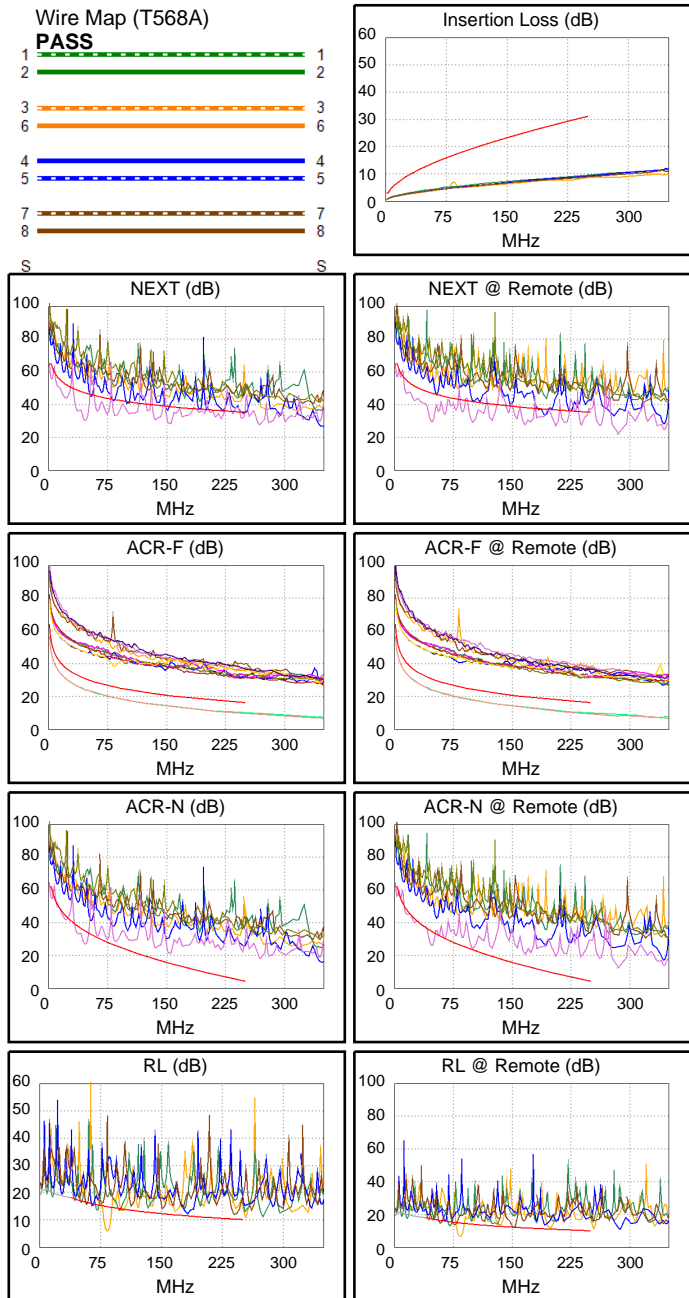
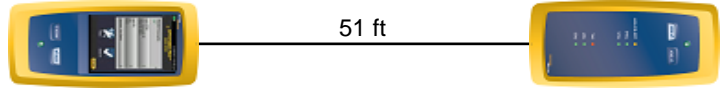
Date / Time: 09/15/2017 07:09:08 PM
Headroom -17.6 dB (NEXT 45-78)
Test Limit: TIA Cat 6 Perm. Link
 Cable Type: Cat 6 U/UTP
 NVP: 69.0%

Operator: CLEBER
 Software Version: V3.0 Build 6
 Limits Version: V3.0
 Calibration Date:
 Main (Module): 06/06/2013
 Remote (Module): 06/04/2013

Test Summary: FAIL

Model: DSX-5000
 Main S/N: 2420012
 Remote S/N: 2420016
 Main Adapter: DSX-PLA004
 Remote Adapter: DSX-PLA004

Length (ft), Limit 295	[Pair 12]	51
Prop. Delay (ns), Limit 498	[Pair 36]	76
Delay Skew (ns), Limit 44	[Pair 36]	1
Resistance (ohms)	[Pair 36]	6.8
Insertion Loss Margin (dB)	[Pair 36]	21.5
Frequency (MHz)	[Pair 36]	250.0
Limit (dB)	[Pair 36]	31.1



	Worst Case Margin		Worst Case Value	
FAIL	MAIN	SR	MAIN	SR
Worst Pair	45-78	45-78	45-78	45-78
NEXT (dB)	-17.0 F	-17.6 F	-10.9	-10.0
Freq. (MHz)	46.5	47.5	154.5	206.5
Limit (dB)	47.2	47.1	38.8	36.7
Worst Pair	45	45	78	78
PS NEXT (dB)	-14.5 F	-15.1 F	-8.7	-7.5
Freq. (MHz)	46.5	47.8	153.5	206.5
Limit (dB)	44.7	44.6	36.2	34.1
FAIL	MAIN	SR	MAIN	SR
Worst Pair	78-45	45-78	78-45	78-45
ACR-F (dB)	-7.3 F	-7.3 F	-6.6	-6.7
Freq. (MHz)	2.0	2.0	250.0	250.0
Limit (dB)	58.2	58.2	16.2	16.2
Worst Pair	45	78	45	45
PS ACR-F (dB)	-4.3 F	-4.3 F	-3.6	-3.7
Freq. (MHz)	2.0	2.0	250.0	250.0
Limit (dB)	55.2	55.2	13.2	13.2
N/A	MAIN	SR	MAIN	SR
Worst Pair	45-78	45-78	45-78	45-78
ACR-N (dB)	-8.2	-8.7	5.5	13.2
Freq. (MHz)	46.5	47.3	154.0	238.5
Limit (dB)	34.9	34.7	15.2	5.4
Worst Pair	45	45	78	45
PS ACR-N (dB)	-5.8	-6.2	7.6	12.4
Freq. (MHz)	46.5	47.5	153.5	206.5
Limit (dB)	32.5	32.2	12.7	6.2
FAIL	MAIN	SR	MAIN	SR
Worst Pair	12	12	12	12
RL (dB)	-9.1 F	-8.4 F	-9.1	-8.4
Freq. (MHz)	83.5	83.5	83.5	83.5
Limit (dB)	14.8	14.8	14.8	14.8