



Cable ID: 32

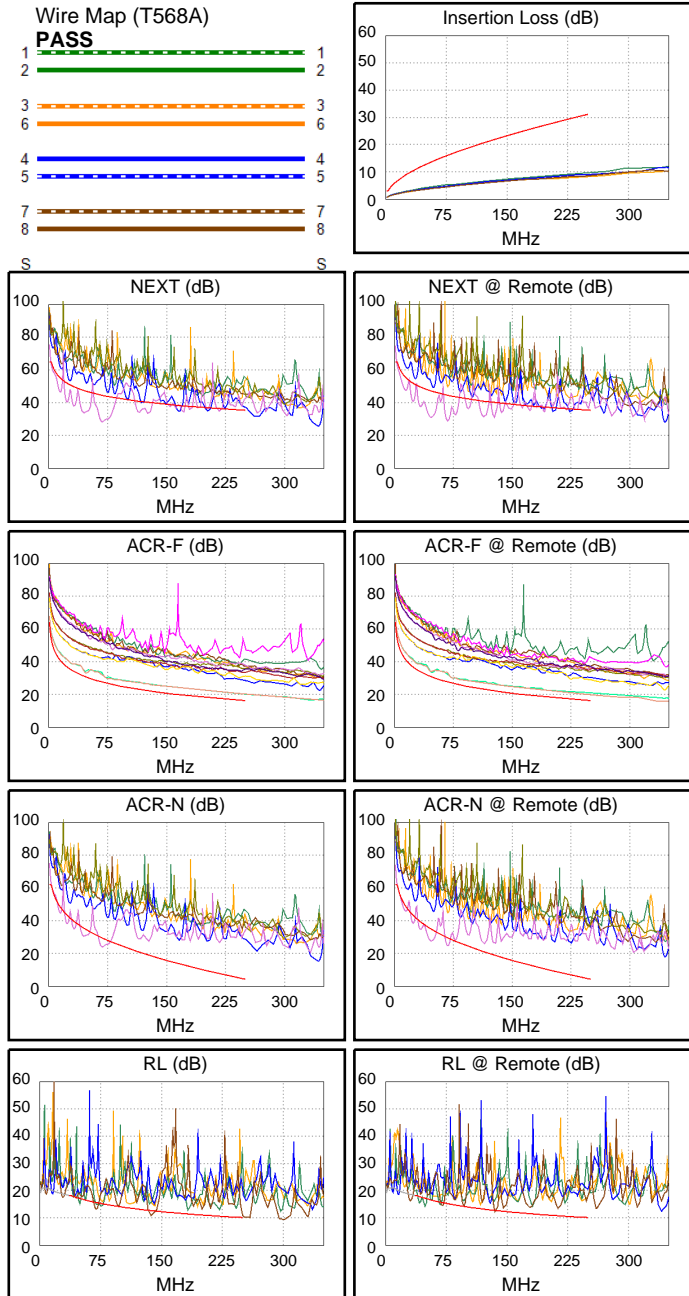
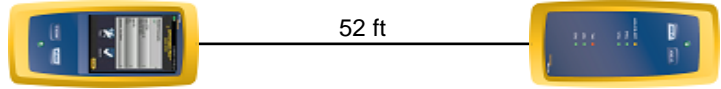
Date / Time: 09/15/2017 07:07:38 PM
Headroom -16.3 dB (NEXT 45-78)
Test Limit: TIA Cat 6 Perm. Link
 Cable Type: Cat 6 U/UTP
 NVP: 69.0%

Operator: CLEBER
 Software Version: V3.0 Build 6
 Limits Version: V3.0
 Calibration Date:
 Main (Module): 06/06/2013
 Remote (Module): 06/04/2013

Test Summary: FAIL

Model: DSX-5000
 Main S/N: 2420012
 Remote S/N: 2420016
 Main Adapter: DSX-PLA004
 Remote Adapter: DSX-PLA004

Length (ft), Limit 295	[Pair 45]	52
Prop. Delay (ns), Limit 498	[Pair 36]	78
Delay Skew (ns), Limit 44	[Pair 12]	1
Resistance (ohms)	[Pair 36]	7.0
Insertion Loss Margin (dB)	[Pair 36]	20.8
Frequency (MHz)	[Pair 36]	243.5
Limit (dB)	[Pair 36]	30.6



	Worst Case Margin		Worst Case Value	
FAIL	MAIN	SR	MAIN	SR
Worst Pair	45-78	45-78	45-78	45-78
NEXT (dB)	-16.3F	-16.2F	-16.2	-15.7
Freq. (MHz)	68.0	46.8	68.5	68.0
Limit (dB)	44.6	47.2	44.5	44.6
Worst Pair	45	45	45	45
PS NEXT (dB)	-13.8F	-13.8F	-13.7	-13.2
Freq. (MHz)	68.0	46.3	68.5	68.0
Limit (dB)	42.1	44.8	42.0	42.1
PASS	MAIN	SR	MAIN	SR
Worst Pair	78-45	45-78	45-78	78-45
ACR-F (dB)	2.4	2.6	3.9	3.8
Freq. (MHz)	47.5	47.5	250.0	250.0
Limit (dB)	30.7	30.7	16.2	16.2
Worst Pair	45	78	78	45
PS ACR-F (dB)	5.3	5.4	6.2	6.6
Freq. (MHz)	47.5	48.0	250.0	250.0
Limit (dB)	27.7	27.6	13.2	13.2
N/A	MAIN	SR	MAIN	SR
Worst Pair	45-78	45-78	45-78	45-78
ACR-N (dB)	-5.6	-7.4	-5.4	-5.0
Freq. (MHz)	68.0	46.3	69.0	68.0
Limit (dB)	29.5	35.0	29.3	29.5
Worst Pair	45	45	45	45
PS ACR-N (dB)	-3.1	-5.2	-3.1	-2.5
Freq. (MHz)	68.5	46.5	68.5	68.0
Limit (dB)	26.9	32.5	26.9	27.0
FAIL	MAIN	SR	MAIN	SR
Worst Pair	78	36	78	78
RL (dB)	-2.5F	-3.0F	-1.8	-0.7
Freq. (MHz)	69.8	48.8	137.5	136.5
Limit (dB)	15.6	17.1	12.6	12.6