



Cable ID: 31

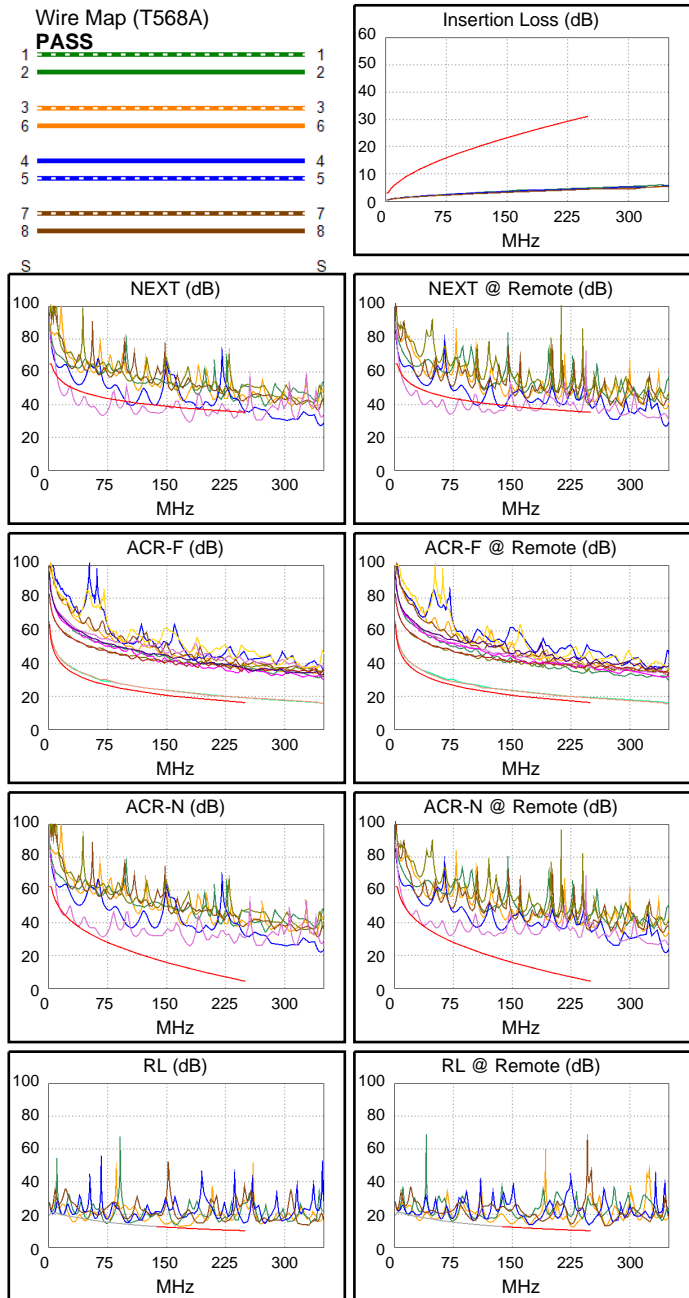
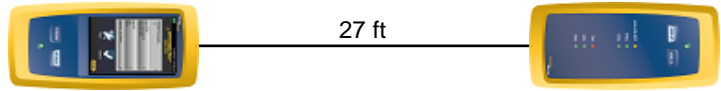
Date / Time: 09/15/2017 07:06:21 PM
Headroom -11.0 dB (NEXT 45-78)
Test Limit: TIA Cat 6 Perm. Link
 Cable Type: Cat 6 U/UTP
 NVP: 69.0%

Operator: CLEBER
 Software Version: V3.0 Build 6
 Limits Version: V3.0
 Calibration Date:
 Main (Module): 06/06/2013
 Remote (Module): 06/04/2013

Test Summary: FAIL

Model: DSX-5000
 Main S/N: 2420012
 Remote S/N: 2420016
 Main Adapter: DSX-PLA004
 Remote Adapter: DSX-PLA004

Length (ft), Limit 295	[Pair 12]	27
Prop. Delay (ns), Limit 498	[Pair 36]	39
Delay Skew (ns), Limit 44	[Pair 12]	0
Resistance (ohms)	[Pair 12]	3.6
Insertion Loss Margin (dB)	[Pair 36]	25.4
Frequency (MHz)	[Pair 36]	239.0
Limit (dB)	[Pair 36]	30.3



Worst Case Margin Worst Case Value

FAIL	MAIN	SR	MAIN	SR
Worst Pair	45-78	45-78	45-78	45-78
NEXT (dB)	-11.0 F	-10.1 F	-8.4	-10.0
Freq. (MHz)	68.8	70.8	180.0	71.8
Limit (dB)	44.5	44.3	37.7	44.2
Worst Pair	45	45	78	45
PS NEXT (dB)	-8.5 F	-7.7 F	-6.0	0.9
Freq. (MHz)	68.8	70.8	180.0	236.0
Limit (dB)	42.0	41.8	35.1	33.1

PASS	MAIN	SR	MAIN	SR
Worst Pair	78-45	78-45	78-45	78-45
ACR-F (dB)	1.9	1.9	2.7	2.6
Freq. (MHz)	180.5	70.3	250.0	250.0
Limit (dB)	19.1	27.3	16.2	16.2
Worst Pair	45	45	45	45
PS ACR-F (dB)	4.9	4.9	5.6	5.4
Freq. (MHz)	182.5	180.5	250.0	250.0
Limit (dB)	16.0	16.1	13.2	13.2

N/A	MAIN	SR	MAIN	SR
Worst Pair	45-78	45-78	45-78	45-78
ACR-N (dB)	-1.4	-0.4	13.9	24.9
Freq. (MHz)	17.9	19.3	180.0	236.0
Limit (dB)	46.4	45.6	11.9	5.7
Worst Pair	45	45	45	45
PS ACR-N (dB)	0.9	1.8	16.1	26.6
Freq. (MHz)	17.9	19.3	180.0	236.0
Limit (dB)	44.0	43.2	9.3	3.0

PASS	MAIN	SR	MAIN	SR
Worst Pair	12	12	12	12
RL (dB)	0.7*	1.8	0.8	1.8
Freq. (MHz)	167.5	228.5	168.5	228.5
Limit (dB)	11.8	10.4	11.7	10.4

* Measurement is within the accuracy limits of the instrument.