



Cable ID: 29

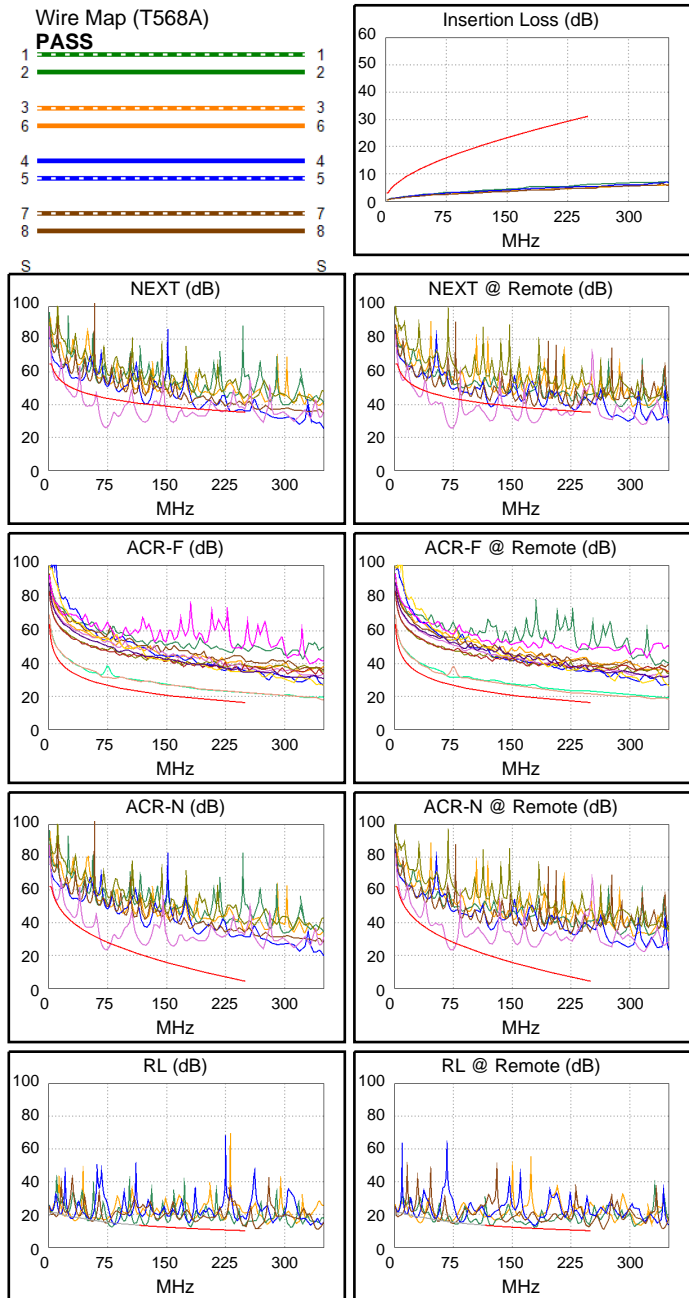
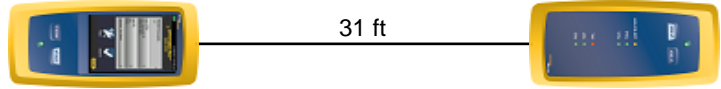
Date / Time: 09/15/2017 07:01:20 PM
Headroom -18.4 dB (NEXT 45-78)
Test Limit: TIA Cat 6 Perm. Link
 Cable Type: Cat 6 U/UTP
 NVP: 69.0%

Operator: CLEBER
 Software Version: V3.0 Build 6
 Limits Version: V3.0
 Calibration Date:
 Main (Module): 06/06/2013
 Remote (Module): 06/04/2013

Test Summary: FAIL

Model: DSX-5000
 Main S/N: 2420012
 Remote S/N: 2420016
 Main Adapter: DSX-PLA004
 Remote Adapter: DSX-PLA004

Length (ft), Limit 295	[Pair 12]	31
Prop. Delay (ns), Limit 498	[Pair 36]	46
Delay Skew (ns), Limit 44	[Pair 36]	1
Resistance (ohms)	[Pair 36]	5.0
Insertion Loss Margin (dB)	[Pair 36]	24.8
Frequency (MHz)	[Pair 36]	246.5
Limit (dB)	[Pair 36]	30.8



	Worst Case Margin		Worst Case Value	
FAIL	MAIN	SR	MAIN	SR
Worst Pair	45-78	45-78	45-78	45-78
NEXT (dB)	-18.1F	-18.4F	-18.0	-18.3
Freq. (MHz)	73.0	73.0	73.5	73.3
Limit (dB)	44.1	44.1	44.0	44.0
Worst Pair	45	45	45	45
PS NEXT (dB)	-15.6F	-15.9F	-15.5	-15.8
Freq. (MHz)	72.8	72.8	73.5	73.3
Limit (dB)	41.6	41.6	41.5	41.5
PASS	MAIN	SR	MAIN	SR
Worst Pair	78-45	45-78	45-78	78-45
ACR-F (dB)	4.3	4.6	5.9	5.4
Freq. (MHz)	69.3	70.3	249.5	250.0
Limit (dB)	27.4	27.3	16.2	16.2
Worst Pair	45	45	78	45
PS ACR-F (dB)	7.2	7.6	8.6	8.3
Freq. (MHz)	69.3	52.0	249.5	250.0
Limit (dB)	24.4	26.9	13.2	13.2
N/A	MAIN	SR	MAIN	SR
Worst Pair	45-78	45-78	45-78	45-78
ACR-N (dB)	-5.1	-5.4	-4.8	-5.2
Freq. (MHz)	72.3	72.3	73.5	73.3
Limit (dB)	28.6	28.6	28.3	28.4
Worst Pair	45	45	45	45
PS ACR-N (dB)	-2.8	-3.1	-2.5	-2.8
Freq. (MHz)	72.3	72.3	73.5	73.3
Limit (dB)	26.1	26.1	25.8	25.8
FAIL	MAIN	SR	MAIN	SR
Worst Pair	36	36	36	36
RL (dB)	-2.6F	-1.0F	1.0	0.3
Freq. (MHz)	80.3	78.5	180.5	179.5
Limit (dB)	15.0	15.1	11.4	11.5