

Cable ID: 26

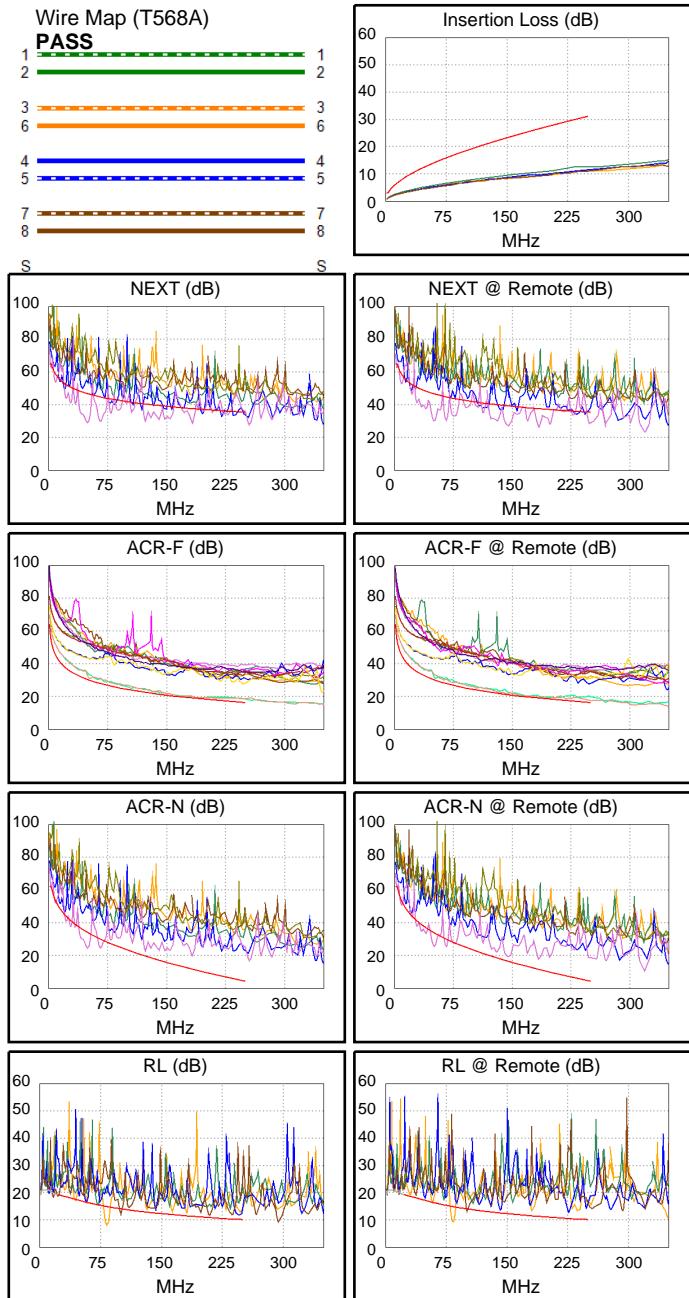
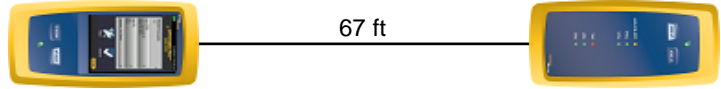
Date / Time: 09/15/2017 06:52:23 PM
Headroom -17.8 dB (NEXT 45-78)
Test Limit: TIA Cat 6 Perm. Link
 Cable Type: Cat 6 U/UTP
 NVP: 69.0%

Operator: CLEBER
 Software Version: V3.0 Build 6
 Limits Version: V3.0
 Calibration Date:
 Main (Module): 06/06/2013
 Remote (Module): 06/04/2013

Test Summary: FAIL

Model: DSX-5000
 Main S/N: 2420012
 Remote S/N: 2420016
 Main Adapter: DSX-PLA004
 Remote Adapter: DSX-PLA004

Length (ft), Limit 295	[Pair 78]	67
Prop. Delay (ns), Limit 498	[Pair 36]	102
Delay Skew (ns), Limit 44	[Pair 36]	3
Resistance (ohms)	[Pair 36]	9.0
Insertion Loss Margin (dB)	[Pair 36]	17.3
Frequency (MHz)	[Pair 36]	235.5
Limit (dB)	[Pair 36]	30.0



Worst Case Margin Worst Case Value

FAIL	MAIN	SR	MAIN	SR
Worst Pair	45-78	45-78	45-78	45-78
NEXT (dB)	-17.8 F	-16.6 F	-8.9	-11.1
Freq. (MHz)	49.5	50.3	183.5	184.5
Limit (dB)	46.8	46.7	37.5	37.5
Worst Pair	45	45	45	45
PS NEXT (dB)	-15.3 F	-14.1 F	-6.5	-8.5
Freq. (MHz)	49.8	50.5	183.5	184.5
Limit (dB)	44.3	44.2	34.9	34.9

PASS	MAIN	SR	MAIN	SR
Worst Pair	78-45	78-45	45-78	78-45
ACR-F (dB)	0.2*	0.1*	2.2	1.4
Freq. (MHz)	169.5	186.0	250.0	250.0
Limit (dB)	19.6	18.8	16.2	16.2
Worst Pair	45	45	78	45
PS ACR-F (dB)	3.1	3.0	5.0	4.2
Freq. (MHz)	169.5	186.0	250.0	250.0
Limit (dB)	16.6	15.8	13.2	13.2

N/A	MAIN	SR	MAIN	SR
Worst Pair	45-78	45-78	45-78	45-78
ACR-N (dB)	-9.6	-8.4	8.0	5.8
Freq. (MHz)	49.8	50.3	183.5	184.5
Limit (dB)	34.0	33.9	11.5	11.4
Worst Pair	45	45	45	45
PS ACR-N (dB)	-7.5	-6.1	9.9	14.7
Freq. (MHz)	49.3	50.3	183.5	249.5
Limit (dB)	31.7	31.4	8.9	1.7

FAIL	MAIN	SR	MAIN	SR
Worst Pair	12	12	12	12
RL (dB)	-6.8 F	-5.8 F	-6.8	-5.8
Freq. (MHz)	83.3	83.0	83.3	83.0
Limit (dB)	14.8	14.8	14.8	14.8

* Measurement is within the accuracy limits of the instrument.