



Cable ID: 21

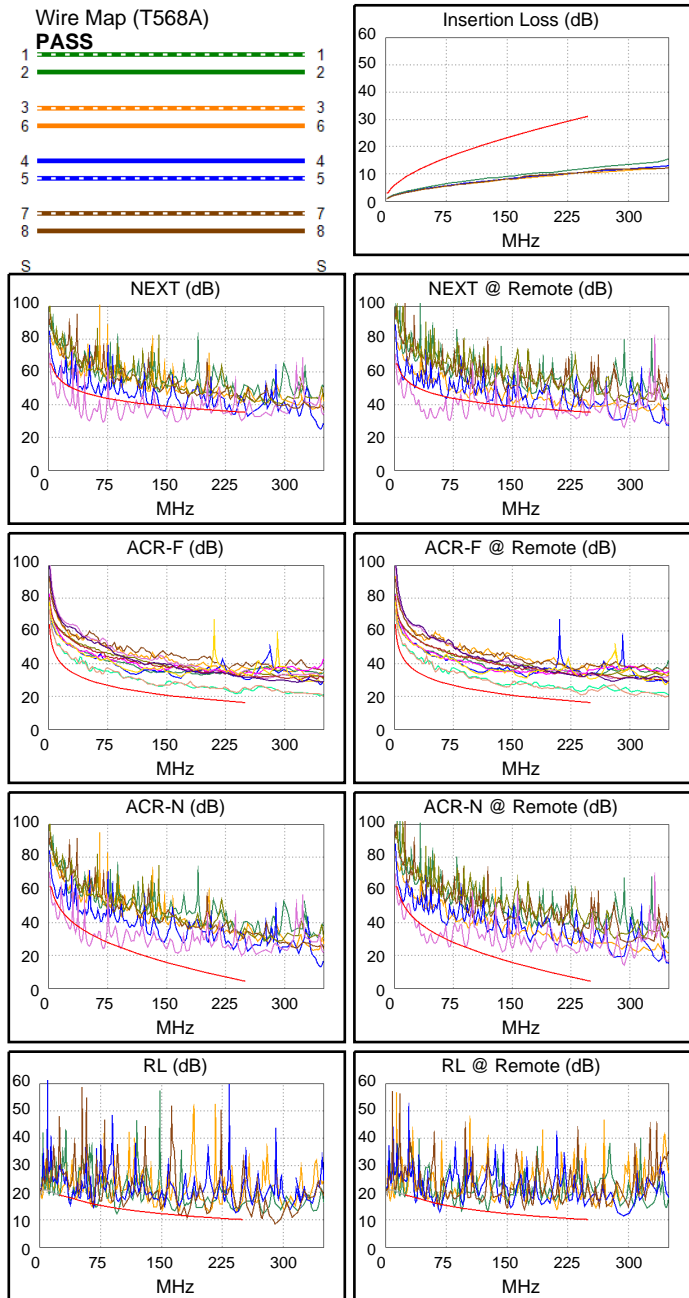
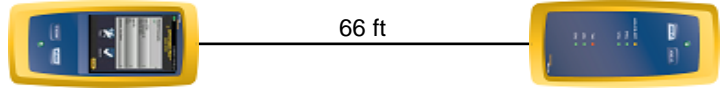
Date / Time: 09/01/2017 09:11:24 PM
Headroom -16.7 dB (NEXT 45-78)
Test Limit: TIA Cat 6 Perm. Link
 Cable Type: Cat 6 U/UTP
 NVP: 69.0%

Operator: CLEBER
 Software Version: V3.0 Build 6
 Limits Version: V3.0
 Calibration Date:
 Main (Module): 06/06/2013
 Remote (Module): 06/04/2013

Test Summary: FAIL

Model: DSX-5000
 Main S/N: 2420012
 Remote S/N: 2420016
 Main Adapter: DSX-PLA004
 Remote Adapter: DSX-PLA004

Length (ft), Limit 295	[Pair 45]	66
Prop. Delay (ns), Limit 498	[Pair 36]	99
Delay Skew (ns), Limit 44	[Pair 36]	2
Resistance (ohms)	[Pair 36]	9.1
Insertion Loss Margin (dB)	[Pair 36]	18.9
Frequency (MHz)	[Pair 36]	247.5
Limit (dB)	[Pair 36]	30.9



	Worst Case Margin		Worst Case Value	
FAIL	MAIN	SR	MAIN	SR
Worst Pair	45-78	45-78	45-78	45-78
NEXT (dB)	-16.5 F	-16.7 F	-9.3	-10.0
Freq. (MHz)	51.0	41.8	163.0	139.0
Limit (dB)	46.6	48.0	38.4	39.5
Worst Pair	45	45	78	78
PS NEXT (dB)	-14.0 F	-14.3 F	-6.9	-7.9
Freq. (MHz)	51.3	41.3	163.0	139.0
Limit (dB)	44.1	45.6	35.8	36.9
PASS	MAIN	SR	MAIN	SR
Worst Pair	45-78	78-45	45-78	78-45
ACR-F (dB)	4.9	4.3	4.9	4.4
Freq. (MHz)	237.5	238.0	237.5	239.0
Limit (dB)	16.7	16.7	16.7	16.6
Worst Pair	45	45	78	45
PS ACR-F (dB)	7.3	6.9	7.4	6.9
Freq. (MHz)	138.5	239.0	237.5	239.0
Limit (dB)	18.4	13.6	13.7	13.6
N/A	MAIN	SR	MAIN	SR
Worst Pair	45-78	45-78	45-78	45-78
ACR-N (dB)	-8.8	-9.1	15.2	15.5
Freq. (MHz)	11.4	41.3	246.0	233.5
Limit (dB)	51.0	36.5	4.6	5.9
Worst Pair	78	45	45	78
PS ACR-N (dB)	-6.7	-6.9	16.8	14.6
Freq. (MHz)	11.4	41.3	246.0	208.0
Limit (dB)	48.7	34.1	2.0	6.1
FAIL	MAIN	SR	MAIN	SR
Worst Pair	45	45	78	45
RL (dB)	-2.7 F	-2.9 F	-0.7	-2.9
Freq. (MHz)	37.5	66.8	182.0	66.8
Limit (dB)	18.1	15.8	11.4	15.8