



**Cable ID: 20**

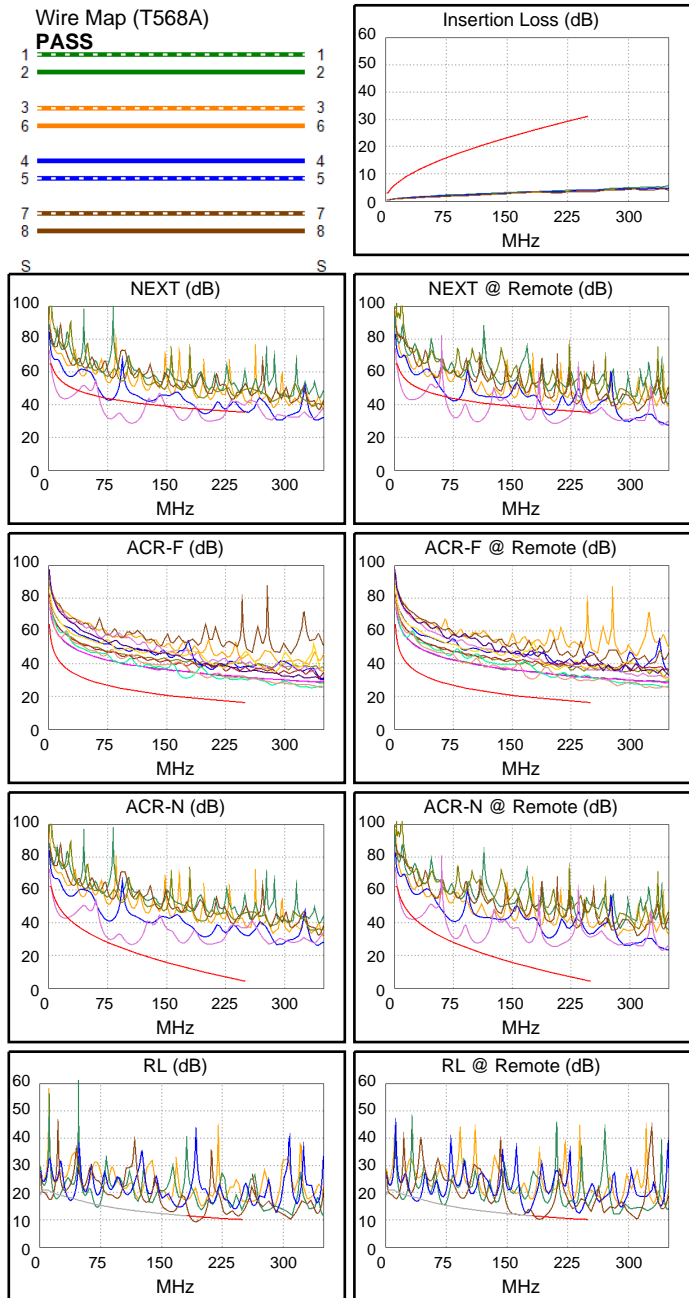
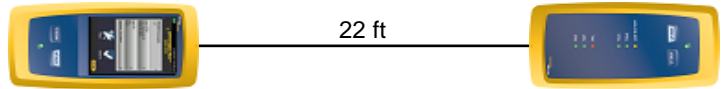
Date / Time: 09/01/2017 09:09:16 PM  
**Headroom -12.8 dB (NEXT 45-78)**  
**Test Limit: TIA Cat 6 Perm. Link**  
 Cable Type: Cat 6 U/UTP  
 NVP: 69.0%

Operator: CLEBER  
 Software Version: V3.0 Build 6  
 Limits Version: V3.0  
 Calibration Date:  
 Main (Module): 06/06/2013  
 Remote (Module): 06/04/2013

**Test Summary: FAIL**

Model: DSX-5000  
 Main S/N: 2420012  
 Remote S/N: 2420016  
 Main Adapter: DSX-PLA004  
 Remote Adapter: DSX-PLA004

Length (ft), Limit 295	[Pair 78]	22
Prop. Delay (ns), Limit 498	[Pair 36]	33
Delay Skew (ns), Limit 44	[Pair 12]	1
Resistance (ohms)	[Pair 12]	3.1
Insertion Loss Margin (dB)	[Pair 36]	26.7
Frequency (MHz)	[Pair 36]	249.0
Limit (dB)	[Pair 36]	31.0



**Worst Case Margin Worst Case Value**

<b>FAIL</b>	MAIN	SR	MAIN	SR
Worst Pair	45-78	45-78	45-78	45-78
<b>NEXT (dB)</b>	<b>-12.8 F</b>	<b>-12.0 F</b>	-12.7	-8.3
Freq. (MHz)	105.5	105.5	107.0	204.5
Limit (dB)	41.5	41.5	41.4	36.8
Worst Pair	78	78	78	78
<b>PS NEXT (dB)</b>	<b>-10.4 F</b>	<b>-9.6 F</b>	-5.7	-6.5
Freq. (MHz)	105.0	105.0	201.5	202.0
Limit (dB)	39.0	39.0	34.3	34.2

<b>PASS</b>	MAIN	SR	MAIN	SR
Worst Pair	45-78	78-45	45-78	78-45
<b>ACR-F (dB)</b>	11.7	11.3	13.5	13.0
Freq. (MHz)	172.5	174.5	236.5	238.5
Limit (dB)	19.5	19.4	16.7	16.6
Worst Pair	45	45	45	45
<b>PS ACR-F (dB)</b>	14.1	12.4	14.7	13.5
Freq. (MHz)	203.5	174.5	241.0	241.0
Limit (dB)	15.0	16.4	13.5	13.5

<b>N/A</b>	MAIN	SR	MAIN	SR
Worst Pair	45-78	45-78	45-78	45-78
<b>ACR-N (dB)</b>	-4.5	-4.8	4.6	16.2
Freq. (MHz)	13.0	12.8	107.0	204.5
Limit (dB)	49.7	49.9	22.1	9.1
Worst Pair	45	45	78	78
<b>PS ACR-N (dB)</b>	-2.2	-2.5	18.6	17.8
Freq. (MHz)	13.0	13.6	201.5	202.0
Limit (dB)	47.3	46.9	6.8	6.7

<b>FAIL</b>	MAIN	SR	MAIN	SR
Worst Pair	78	78	78	78
<b>RL (dB)</b>	<b>-2.0 F</b>	<b>-1.1 F</b>	-1.9	-1.1
Freq. (MHz)	192.5	190.5	193.0	190.5
Limit (dB)	11.2	11.2	11.1	11.2