



Cable ID: 2

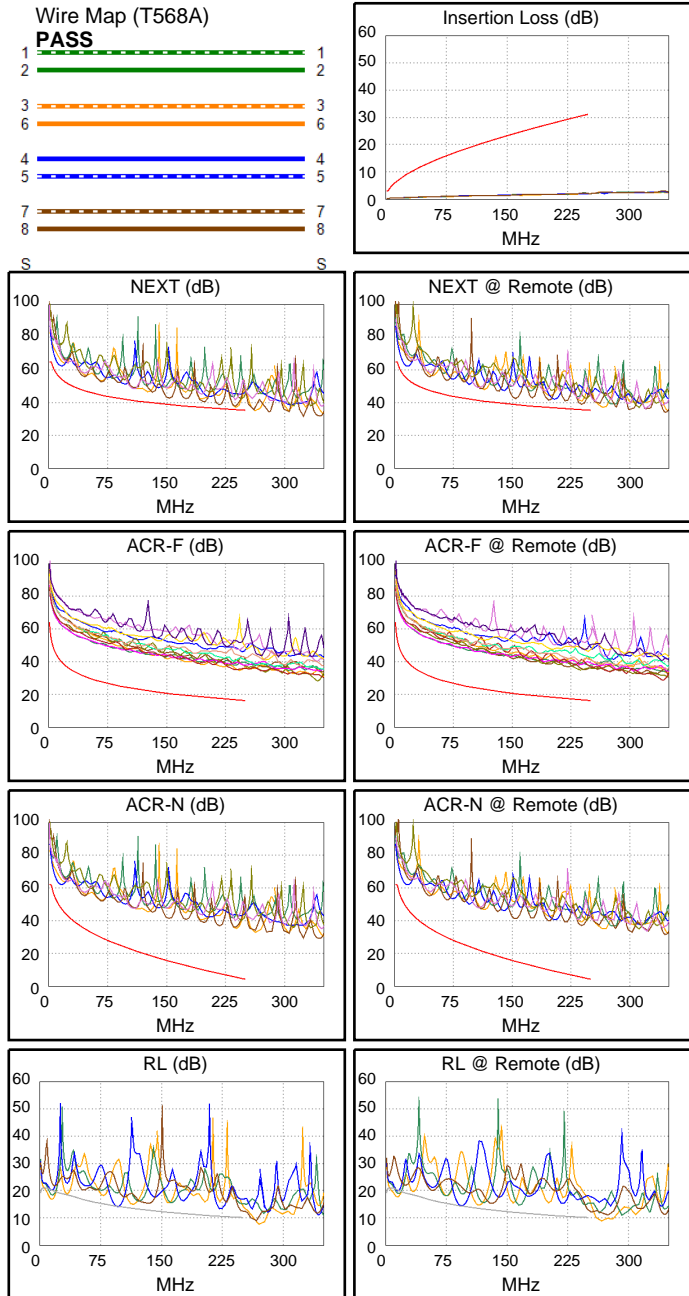
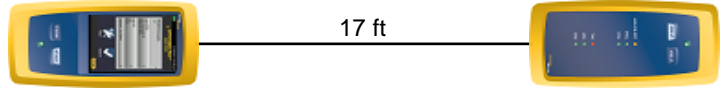
Date / Time: 09/01/2017 08:25:03 PM
Headroom 1.5 dB (NEXT 12-36)
Test Limit: TIA Cat 6 Perm. Link
 Cable Type: Cat 6 U/UTP
 NVP: 69.0%

Operator: CLEBER
 Software Version: V3.0 Build 6
 Limits Version: V3.0
 Calibration Date:
 Main (Module): 06/06/2013
 Remote (Module): 06/04/2013

Test Summary: PASS

Model: DSX-5000
 Main S/N: 2420012
 Remote S/N: 2420016
 Main Adapter: DSX-PLA004
 Remote Adapter: DSX-PLA004

Length (ft), Limit 295	[Pair 12]	17
Prop. Delay (ns), Limit 498	[Pair 45]	25
Delay Skew (ns), Limit 44	[Pair 12]	0
Resistance (ohms)	[Pair 78]	1.5
Insertion Loss Margin (dB)	[Pair 36]	28.7
Frequency (MHz)	[Pair 36]	247.5
Limit (dB)	[Pair 36]	30.9



Worst Case Margin Worst Case Value

PASS	MAIN	SR	MAIN	SR
Worst Pair	12-36	36-45	12-36	36-45
NEXT (dB)	1.5	3.4	1.5	3.4
Freq. (MHz)	239.0	239.0	239.0	239.0
Limit (dB)	35.7	35.7	35.7	35.7
Worst Pair	36	36	36	36
PS NEXT (dB)	1.1	3.4	1.1	3.4
Freq. (MHz)	237.0	239.5	237.0	239.5
Limit (dB)	33.1	33.0	33.1	33.0

PASS	MAIN	SR	MAIN	SR
Worst Pair	12-36	36-45	12-36	36-45
ACR-F (dB)	18.2	18.3	18.2	18.4
Freq. (MHz)	243.0	238.0	243.0	240.0
Limit (dB)	16.5	16.7	16.5	16.6
Worst Pair	36	45	36	45
PS ACR-F (dB)	18.5	19.0	18.7	19.0
Freq. (MHz)	240.5	236.5	244.0	236.5
Limit (dB)	13.6	13.7	13.4	13.7

N/A	MAIN	SR	MAIN	SR
Worst Pair	12-78	12-78	12-36	36-45
ACR-N (dB)	12.7	12.9	30.0	31.7
Freq. (MHz)	10.0	12.0	239.5	239.0
Limit (dB)	52.3	50.5	5.3	5.4
Worst Pair	12	12	36	36
PS ACR-N (dB)	13.8	14.3	29.6	31.7
Freq. (MHz)	7.8	9.9	238.0	239.5
Limit (dB)	52.4	50.1	2.8	2.7

N/A	MAIN	SR	MAIN	SR
Worst Pair	12	12	78	78
RL (dB)	-3.4	-2.6	2.3	2.9
Freq. (MHz)	14.8	14.1	250.0	250.0
Limit (dB)	20.2	20.3	10.0	10.0

Compliant Network Standards:
 10BASE-T 100BASE-TX 100BASE-T4
 1000BASE-T ATM-25 ATM-51
 ATM-155 100VG-AnyLan TR-4
 TR-16 Active TR-16 Passive