

Cable ID: 18

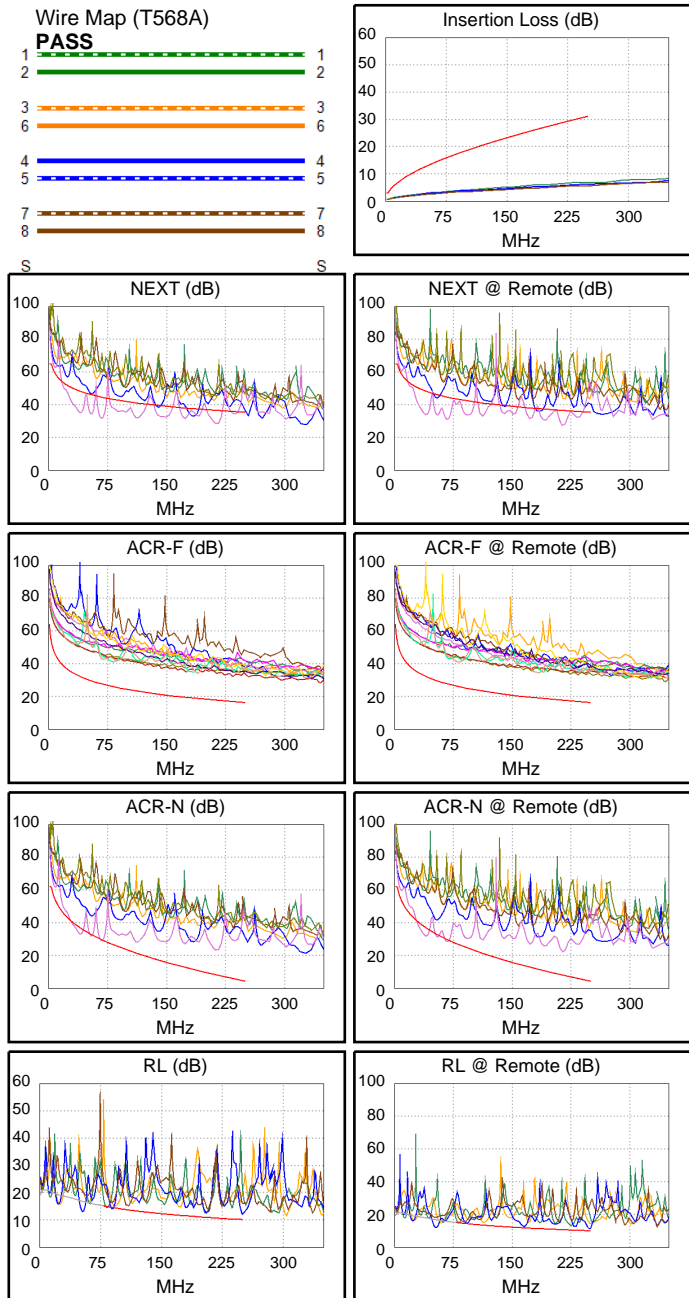
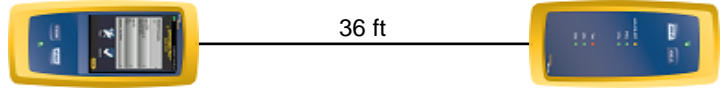
Date / Time: 09/01/2017 09:02:42 PM
Headroom -14.3 dB (NEXT 45-78)
Test Limit: TIA Cat 6 Perm. Link
 Cable Type: Cat 6 U/UTP
 NVP: 69.0%

Operator: CLEBER
 Software Version: V3.0 Build 6
 Limits Version: V3.0
 Calibration Date:
 Main (Module): 06/06/2013
 Remote (Module): 06/04/2013

Test Summary: FAIL

Model: DSX-5000
 Main S/N: 2420012
 Remote S/N: 2420016
 Main Adapter: DSX-PLA004
 Remote Adapter: DSX-PLA004

Length (ft), Limit 295	[Pair 45]	36
Prop. Delay (ns), Limit 498	[Pair 36]	54
Delay Skew (ns), Limit 44	[Pair 12]	1
Resistance (ohms)	[Pair 78]	5.3
Insertion Loss Margin (dB)	[Pair 36]	23.3
Frequency (MHz)	[Pair 36]	238.0
Limit (dB)	[Pair 36]	30.2



Worst Case Margin Worst Case Value

FAIL	MAIN	SR	MAIN	SR
Worst Pair	45-78	45-78	45-78	45-78
NEXT (dB)	-13.0F	-14.3F	-8.2	-9.2
Freq. (MHz)	67.0	40.0	214.0	215.0
Limit (dB)	44.7	48.3	36.4	36.4
Worst Pair	45	45	45	45
PS NEXT (dB)	-10.6F	-11.9F	-5.7	-6.6
Freq. (MHz)	40.3	39.8	214.0	215.0
Limit (dB)	45.8	45.9	33.8	33.8

PASS	MAIN	SR	MAIN	SR
Worst Pair	45-78	78-45	45-36	36-45
ACR-F (dB)	15.2	15.0	15.5	16.3
Freq. (MHz)	80.5	80.5	235.5	235.0
Limit (dB)	26.1	26.1	16.7	16.8
Worst Pair	36	45	36	45
PS ACR-F (dB)	16.1	15.9	16.2	16.8
Freq. (MHz)	235.0	184.5	235.5	235.0
Limit (dB)	13.8	15.9	13.7	13.8

N/A	MAIN	SR	MAIN	SR
Worst Pair	45-78	45-78	45-78	45-78
ACR-N (dB)	-3.8	-5.2	15.1	14.2
Freq. (MHz)	39.8	39.5	214.0	215.0
Limit (dB)	37.0	37.1	8.0	7.9
Worst Pair	45	45	45	45
PS ACR-N (dB)	-1.4	-2.9	17.2	16.5
Freq. (MHz)	40.3	39.0	214.0	215.0
Limit (dB)	34.4	34.8	5.4	5.3

FAIL	MAIN	SR	MAIN	SR
Worst Pair	45	36	45	45
RL (dB)	-0.5F	-0.9F	1.9	1.2
Freq. (MHz)	90.0	62.3	250.0	249.5
Limit (dB)	14.5	16.1	10.0	10.0