



Cable ID: 16

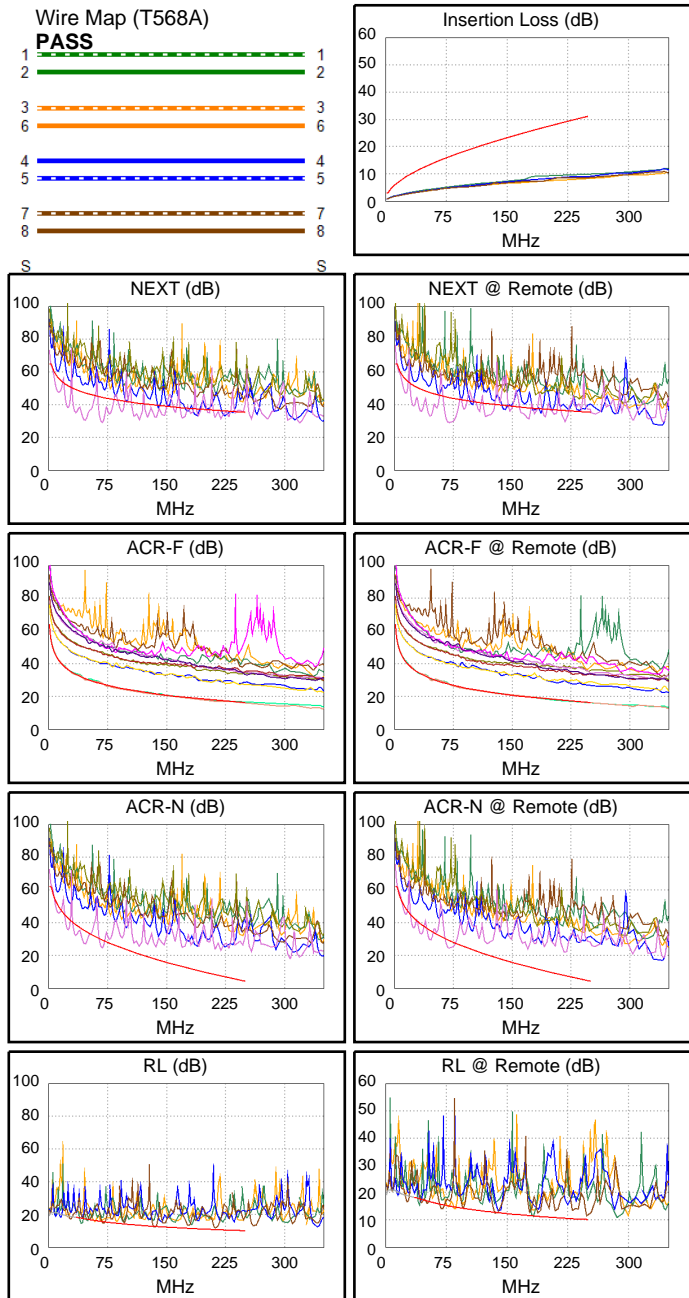
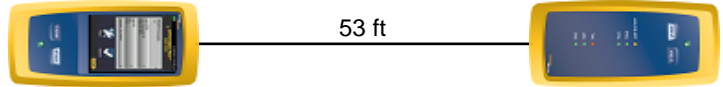
Date / Time: 09/01/2017 08:55:40 PM
Headroom -16.9 dB (NEXT 45-78)
Test Limit: TIA Cat 6 Perm. Link
 Cable Type: Cat 6 U/UTP
 NVP: 69.0%

Operator: CLEBER
 Software Version: V3.0 Build 6
 Limits Version: V3.0
 Calibration Date:
 Main (Module): 06/06/2013
 Remote (Module): 06/04/2013

Test Summary: FAIL

Model: DSX-5000
 Main S/N: 2420012
 Remote S/N: 2420016
 Main Adapter: DSX-PLA004
 Remote Adapter: DSX-PLA004

Length (ft), Limit 295	[Pair 12]	53
Prop. Delay (ns), Limit 498	[Pair 36]	79
Delay Skew (ns), Limit 44	[Pair 36]	1
Resistance (ohms)	[Pair 36]	7.0
Insertion Loss Margin (dB)	[Pair 36]	21.3
Frequency (MHz)	[Pair 36]	250.0
Limit (dB)	[Pair 36]	31.1



	Worst Case Margin		Worst Case Value	
FAIL	MAIN	SR	MAIN	SR
Worst Pair	45-78	45-78	45-78	45-78
NEXT (dB)	-16.9F	-15.4F	-15.4	-15.3
Freq. (MHz)	46.0	68.8	68.3	69.8
Limit (dB)	47.3	44.5	44.5	44.4
Worst Pair	45	45	45	45
PS NEXT (dB)	-14.5F	-12.9F	-12.9	-12.8
Freq. (MHz)	45.8	68.8	68.3	69.8
Limit (dB)	44.9	42.0	42.0	41.9
FAIL	MAIN	SR	MAIN	SR
Worst Pair	78-45	78-45	78-45	78-45
ACR-F (dB)	-1.1F	-1.1F	-0.1	-0.2
Freq. (MHz)	218.5	47.5	250.0	246.5
Limit (dB)	17.4	30.7	16.2	16.4
Worst Pair	45	78	45	78
PS ACR-F (dB)	1.9	1.8	2.8	2.6
Freq. (MHz)	218.5	216.0	250.0	250.0
Limit (dB)	14.4	14.5	13.2	13.2
N/A	MAIN	SR	MAIN	SR
Worst Pair	45-78	45-78	45-78	45-78
ACR-N (dB)	-8.2	-6.2	15.7	13.8
Freq. (MHz)	46.0	33.5	219.5	218.0
Limit (dB)	35.1	39.2	7.4	7.6
Worst Pair	45	45	78	78
PS ACR-N (dB)	-6.0	-4.0	17.2	16.0
Freq. (MHz)	45.8	33.3	219.5	218.5
Limit (dB)	32.7	36.8	4.8	4.9
FAIL	MAIN	SR	MAIN	SR
Worst Pair	36	36	78	78
RL (dB)	-3.4F	-2.4F	0.9	0.8
Freq. (MHz)	42.0	41.8	212.5	250.0
Limit (dB)	17.8	17.8	10.7	10.0