



Cable ID: 15

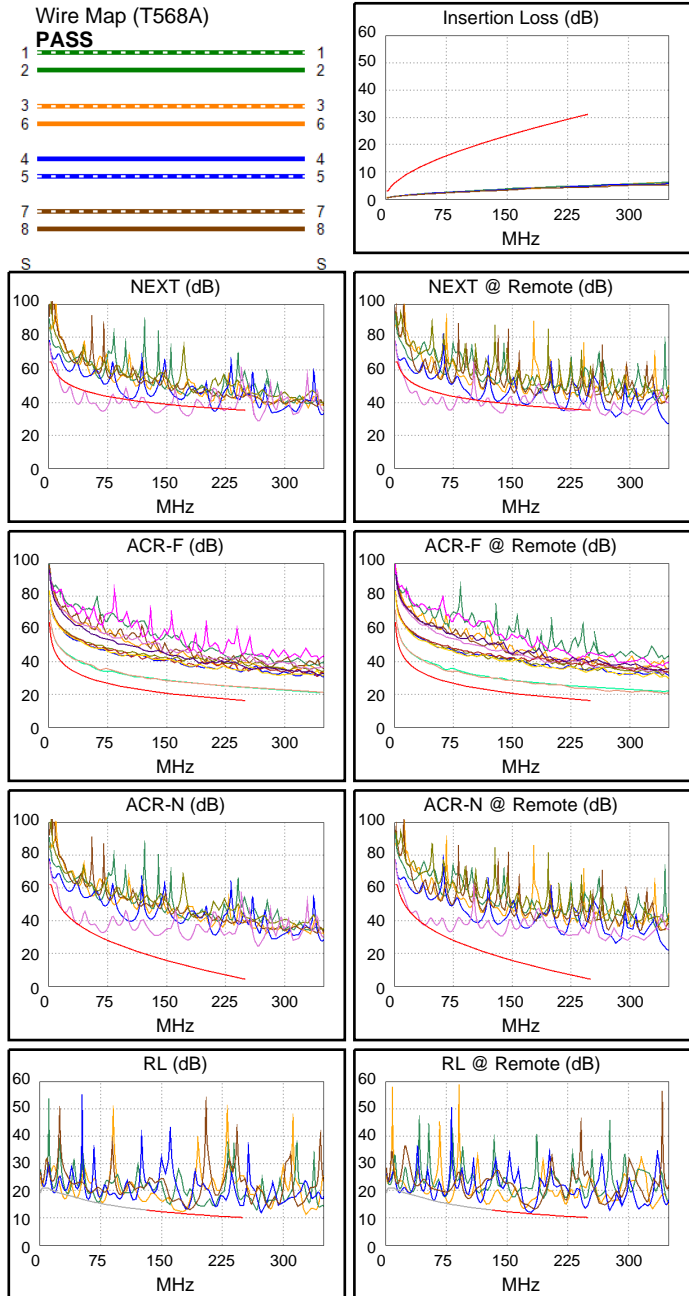
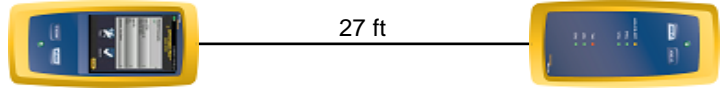
Date / Time: 09/01/2017 08:54:15 PM
Headroom -10.0 dB (NEXT 45-78)
Test Limit: TIA Cat 6 Perm. Link
 Cable Type: Cat 6 U/UTP
 NVP: 69.0%

Operator: CLEBER
 Software Version: V3.0 Build 6
 Limits Version: V3.0
 Calibration Date:
 Main (Module): 06/06/2013
 Remote (Module): 06/04/2013

Test Summary: FAIL

Model: DSX-5000
 Main S/N: 2420012
 Remote S/N: 2420016
 Main Adapter: DSX-PLA004
 Remote Adapter: DSX-PLA004

Length (ft), Limit 295	[Pair 12]	27
Prop. Delay (ns), Limit 498	[Pair 36]	39
Delay Skew (ns), Limit 44	[Pair 12]	0
Resistance (ohms)	[Pair 12]	6.1
Insertion Loss Margin (dB)	[Pair 36]	26.0
Frequency (MHz)	[Pair 36]	248.0
Limit (dB)	[Pair 36]	31.0



	Worst Case Margin		Worst Case Value	
FAIL	MAIN	SR	MAIN	SR
Worst Pair	45-78	45-78	45-78	45-78
NEXT (dB)	-9.7F	-10.0F	-6.0	-6.1
Freq. (MHz)	68.0	37.3	177.5	137.0
Limit (dB)	44.6	48.8	37.8	39.6
Worst Pair	45	45	45	78
PS NEXT (dB)	-7.3F	-7.6F	-3.5	-1.0
Freq. (MHz)	37.0	36.5	178.5	217.5
Limit (dB)	46.4	46.5	35.1	33.7
PASS	MAIN	SR	MAIN	SR
Worst Pair	45-78	78-45	45-78	78-45
ACR-F (dB)	6.7	6.6	7.7	7.0
Freq. (MHz)	67.8	67.8	250.0	250.0
Limit (dB)	27.6	27.6	16.2	16.2
Worst Pair	78	45	78	45
PS ACR-F (dB)	9.5	9.4	10.3	9.8
Freq. (MHz)	67.8	67.0	250.0	250.0
Limit (dB)	24.6	24.7	13.2	13.2
N/A	MAIN	SR	MAIN	SR
Worst Pair	45-78	45-78	45-78	45-78
ACR-N (dB)	-0.5	-0.7	16.0	13.0
Freq. (MHz)	36.3	36.5	178.5	137.0
Limit (dB)	38.2	38.1	12.1	17.5
Worst Pair	45	45	45	78
PS ACR-N (dB)	1.9	1.7	18.0	23.8
Freq. (MHz)	36.8	36.8	178.5	217.5
Limit (dB)	35.6	35.6	9.5	5.0
PASS	MAIN	SR	MAIN	SR
Worst Pair	12	45	12	45
RL (dB)	0.6*	0.5*	0.7	0.6
Freq. (MHz)	175.5	179.5	176.5	180.0
Limit (dB)	11.6	11.5	11.5	11.4

* Measurement is within the accuracy limits of the instrument.