

Cable ID: 13

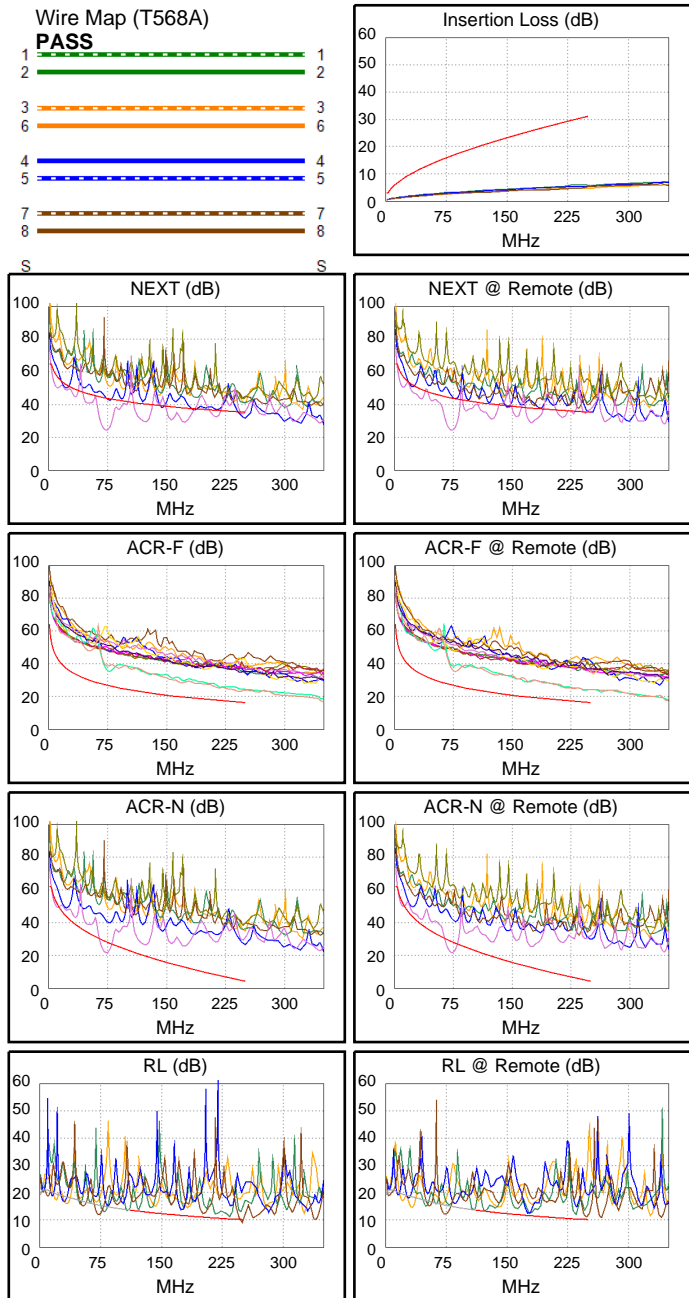
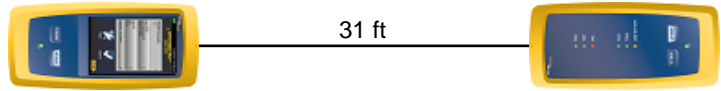
Date / Time: 09/01/2017 08:50:28 PM
Headroom -19.6 dB (NEXT 45-78)
Test Limit: TIA Cat 6 Perm. Link
 Cable Type: Cat 6 U/UTP
 NVP: 69.0%

Operator: CLEBER
 Software Version: V3.0 Build 6
 Limits Version: V3.0
 Calibration Date:
 Main (Module): 06/06/2013
 Remote (Module): 06/04/2013

Test Summary: FAIL

Model: DSX-5000
 Main S/N: 2420012
 Remote S/N: 2420016
 Main Adapter: DSX-PLA004
 Remote Adapter: DSX-PLA004

Length (ft), Limit 295	[Pair 78]	31
Prop. Delay (ns), Limit 498	[Pair 36]	46
Delay Skew (ns), Limit 44	[Pair 12]	1
Resistance (ohms)	[Pair 12]	4.3
Insertion Loss Margin (dB)	[Pair 36]	23.7
Frequency (MHz)	[Pair 36]	235.5
Limit (dB)	[Pair 36]	30.0



	Worst Case Margin		Worst Case Value	
FAIL	MAIN	SR	MAIN	SR
Worst Pair	45-78	45-78	45-78	45-78
NEXT (dB)	-19.6 F	-19.6 F	-19.5	-19.5
Freq. (MHz)	73.0	73.0	74.0	73.5
Limit (dB)	44.1	44.1	44.0	44.0
Worst Pair	45	45	78	45
PS NEXT (dB)	-17.1 F	-17.1 F	-17.1	-17.0
Freq. (MHz)	72.8	72.8	74.0	73.5
Limit (dB)	41.6	41.6	41.5	41.5
PASS	MAIN	SR	MAIN	SR
Worst Pair	78-45	45-78	78-45	45-78
ACR-F (dB)	6.5	7.2	6.6	7.2
Freq. (MHz)	243.5	244.0	244.0	244.0
Limit (dB)	16.5	16.4	16.4	16.4
Worst Pair	45	78	45	78
PS ACR-F (dB)	9.2	9.9	9.3	9.9
Freq. (MHz)	243.5	244.5	244.0	244.5
Limit (dB)	13.5	13.4	13.4	13.4
N/A	MAIN	SR	MAIN	SR
Worst Pair	45-78	45-78	45-78	45-78
ACR-N (dB)	-6.7	-6.7	-6.5	-6.6
Freq. (MHz)	73.3	73.3	74.0	73.5
Limit (dB)	28.4	28.4	28.2	28.3
Worst Pair	45	45	78	45
PS ACR-N (dB)	-4.3	-4.3	-4.1	-4.1
Freq. (MHz)	72.8	72.8	74.0	73.5
Limit (dB)	26.0	26.0	25.7	25.8
FAIL	MAIN	SR	MAIN	SR
Worst Pair	36	36	78	78
RL (dB)	-2.0 F	-0.3 F	-1.0	1.1
Freq. (MHz)	80.3	108.5	250.0	248.5
Limit (dB)	15.0	13.6	10.0	10.0