



Cable ID: 11

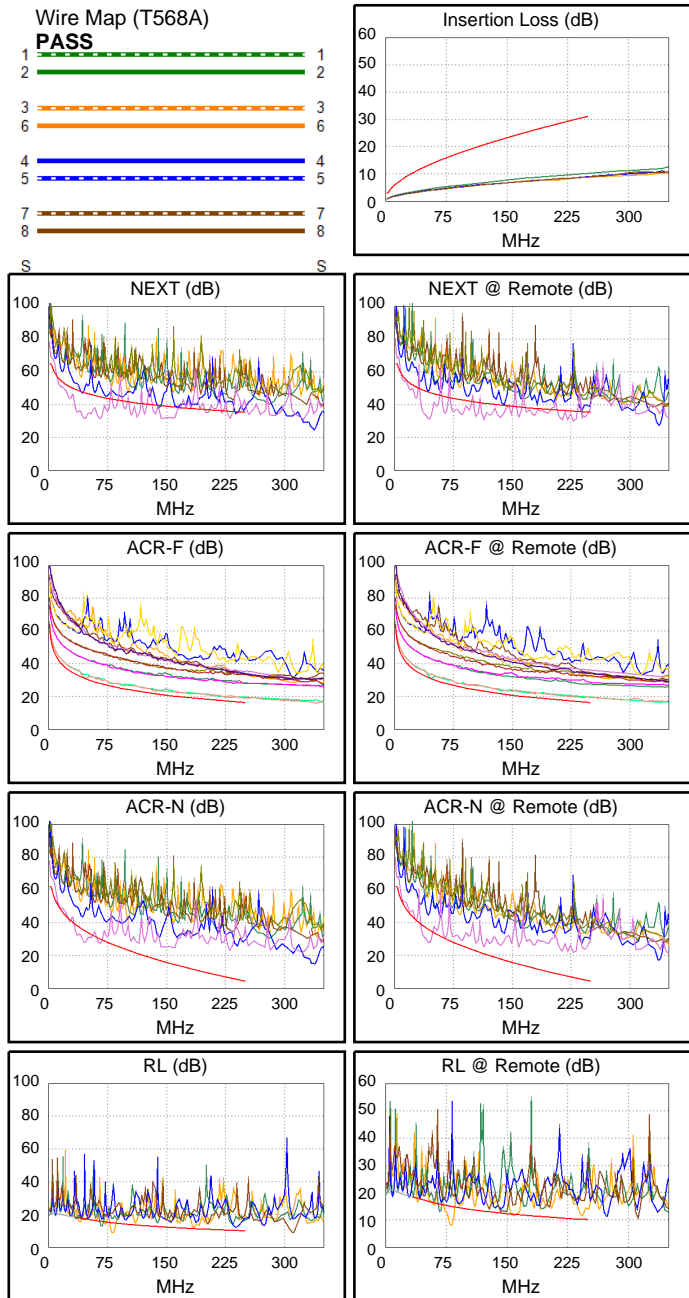
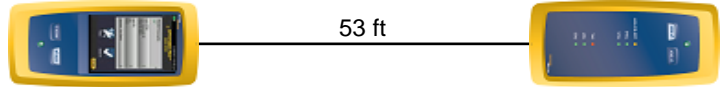
Date / Time: 09/01/2017 08:45:25 PM
Headroom -16.4 dB (NEXT 45-78)
Test Limit: TIA Cat 6 Perm. Link
 Cable Type: Cat 6 U/UTP
 NVP: 69.0%

Operator: CLEBER
 Software Version: V3.0 Build 6
 Limits Version: V3.0
 Calibration Date:
 Main (Module): 06/06/2013
 Remote (Module): 06/04/2013

Test Summary: FAIL

Model: DSX-5000
 Main S/N: 2420012
 Remote S/N: 2420016
 Main Adapter: DSX-PLA004
 Remote Adapter: DSX-PLA004

Length (ft), Limit 295	[Pair 45]	53
Prop. Delay (ns), Limit 498	[Pair 36]	80
Delay Skew (ns), Limit 44	[Pair 36]	2
Resistance (ohms)	[Pair 12]	16.3
Insertion Loss Margin (dB)	[Pair 36]	20.2
Frequency (MHz)	[Pair 36]	237.0
Limit (dB)	[Pair 36]	30.2



Worst Case Margin Worst Case Value

FAIL	MAIN	SR	MAIN	SR
Worst Pair	45-78	45-78	45-78	45-78
NEXT (dB)	-16.0F	-16.4F	-8.0	-6.5
Freq. (MHz)	45.5	44.3	144.5	229.5
Limit (dB)	47.4	47.6	39.2	35.9
Worst Pair	78	78	78	78
PS NEXT (dB)	-13.6F	-14.1F	-5.9	-4.0
Freq. (MHz)	45.8	43.8	144.0	229.5
Limit (dB)	44.9	45.2	36.7	33.3

PASS	MAIN	SR	MAIN	SR
Worst Pair	78-45	45-78	78-45	78-45
ACR-F (dB)	0.3*	0.3*	2.7	2.1
Freq. (MHz)	46.3	46.3	248.5	231.0
Limit (dB)	30.9	30.9	16.3	16.9
Worst Pair	45	78	45	45
PS ACR-F (dB)	2.9	3.3	5.1	4.5
Freq. (MHz)	46.3	46.3	248.5	231.0
Limit (dB)	27.9	27.9	13.3	13.9

N/A	MAIN	SR	MAIN	SR
Worst Pair	45-78	45-78	45-78	45-78
ACR-N (dB)	-7.5	-8.1	16.9	14.7
Freq. (MHz)	45.0	43.3	230.5	229.5
Limit (dB)	35.4	35.9	6.2	6.3
Worst Pair	78	78	45	45
PS ACR-N (dB)	-5.1	-5.7	18.9	17.0
Freq. (MHz)	45.0	43.8	230.5	229.5
Limit (dB)	32.9	33.3	3.6	3.7

FAIL	MAIN	SR	MAIN	SR
Worst Pair	12	12	12	12
RL (dB)	-6.2F	-7.0F	-6.2	-7.0
Freq. (MHz)	81.5	81.0	81.5	81.0
Limit (dB)	14.9	14.9	14.9	14.9

* Measurement is within the accuracy limits of the instrument.