



Cable ID: 10

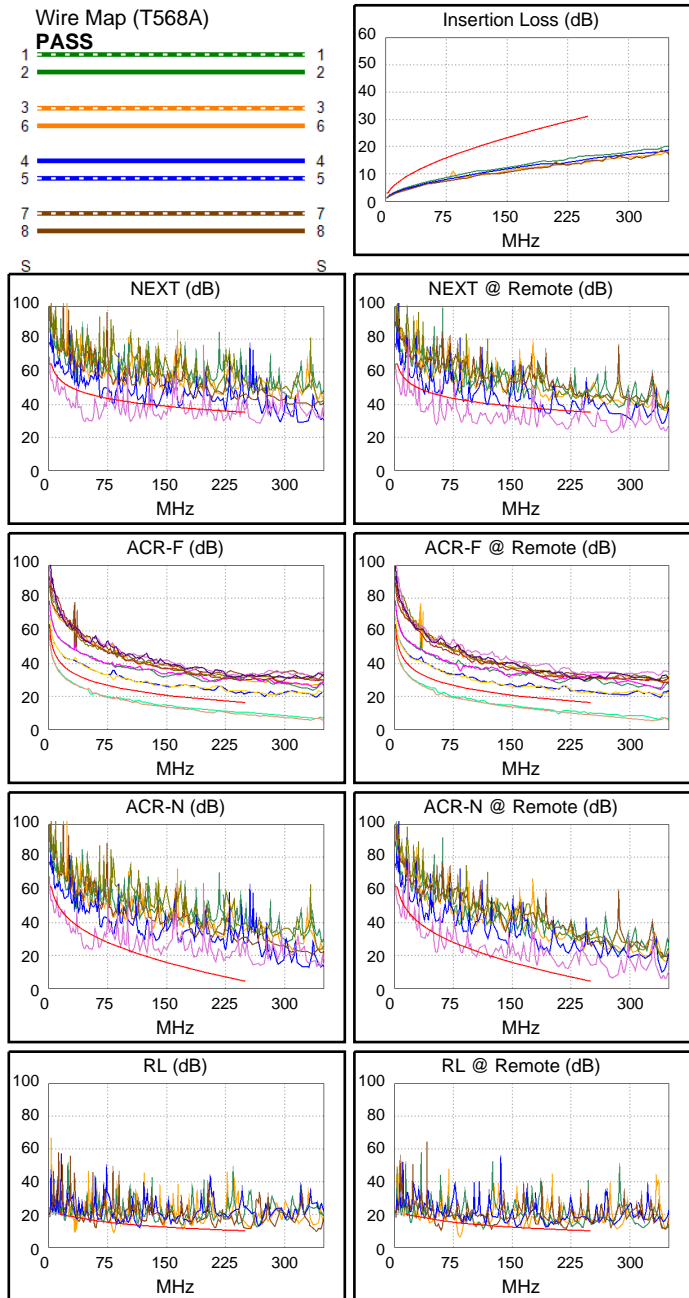
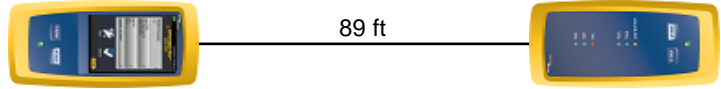
Date / Time: 09/01/2017 08:43:58 PM
Headroom -18.3 dB (NEXT 45-78)
Test Limit: TIA Cat 6 Perm. Link
 Cable Type: Cat 6 U/UTP
 NVP: 69.0%

Operator: CLEBER
 Software Version: V3.0 Build 6
 Limits Version: V3.0
 Calibration Date:
 Main (Module): 06/06/2013
 Remote (Module): 06/04/2013

Test Summary: FAIL

Model: DSX-5000
 Main S/N: 2420012
 Remote S/N: 2420016
 Main Adapter: DSX-PLA004
 Remote Adapter: DSX-PLA004

| | | |
|-----------------------------|-----------|-------|
| Length (ft), Limit 295 | [Pair 12] | 89 |
| Prop. Delay (ns), Limit 498 | [Pair 36] | 133 |
| Delay Skew (ns), Limit 44 | [Pair 36] | 2 |
| Resistance (ohms) | [Pair 45] | 15.0 |
| | | |
| Insertion Loss Margin (dB) | [Pair 36] | 13.8 |
| Frequency (MHz) | [Pair 36] | 241.5 |
| Limit (dB) | [Pair 36] | 30.5 |



Worst Case Margin Worst Case Value

| | MAIN | SR | MAIN | SR |
|---------------------|----------------|----------------|-------|-------|
| FAIL | | | | |
| Worst Pair | 45-78 | 45-78 | 45-78 | 45-78 |
| NEXT (dB) | -17.7 F | -18.3 F | -17.6 | -11.5 |
| Freq. (MHz) | 45.5 | 53.3 | 46.0 | 220.0 |
| Limit (dB) | 47.4 | 46.3 | 47.3 | 36.2 |
| Worst Pair | 45 | 45 | 45 | 78 |
| PS NEXT (dB) | -15.2 F | -15.8 F | -15.1 | -9.3 |
| Freq. (MHz) | 45.8 | 53.5 | 46.0 | 220.0 |
| Limit (dB) | 44.9 | 43.8 | 44.8 | 33.6 |

| | MAIN | SR | MAIN | SR |
|----------------------|---------------|---------------|-------|-------|
| FAIL | | | | |
| Worst Pair | 45-78 | 45-78 | 78-45 | 78-45 |
| ACR-F (dB) | -8.3 F | -8.6 F | -7.3 | -7.5 |
| Freq. (MHz) | 54.5 | 209.5 | 246.5 | 243.5 |
| Limit (dB) | 29.5 | 17.8 | 16.4 | 16.5 |
| Worst Pair | 78 | 78 | 45 | 45 |
| PS ACR-F (dB) | -5.4 F | -5.7 F | -4.3 | -4.5 |
| Freq. (MHz) | 54.5 | 209.5 | 246.5 | 243.5 |
| Limit (dB) | 26.5 | 14.8 | 13.4 | 13.5 |

| | MAIN | SR | MAIN | SR |
|----------------------|-------|-------|-------|-------|
| N/A | | | | |
| Worst Pair | 45-78 | 45-78 | 45-78 | 45-78 |
| ACR-N (dB) | -11.1 | -11.5 | 7.9 | 3.9 |
| Freq. (MHz) | 45.5 | 53.3 | 212.0 | 220.0 |
| Limit (dB) | 35.2 | 33.1 | 8.2 | 7.4 |
| Worst Pair | 45 | 45 | 78 | 45 |
| PS ACR-N (dB) | -9.1 | -9.3 | 10.2 | 6.1 |
| Freq. (MHz) | 45.8 | 53.3 | 212.0 | 220.0 |
| Limit (dB) | 32.7 | 30.6 | 5.6 | 4.7 |

| | MAIN | SR | MAIN | SR |
|----------------|---------------|---------------|------|------|
| FAIL | | | | |
| Worst Pair | 12 | 12 | 12 | 12 |
| RL (dB) | -8.5 F | -8.6 F | -5.8 | -8.6 |
| Freq. (MHz) | 32.5 | 83.5 | 83.0 | 83.5 |
| Limit (dB) | 18.4 | 14.8 | 14.8 | 14.8 |