



**Cable ID: 042**

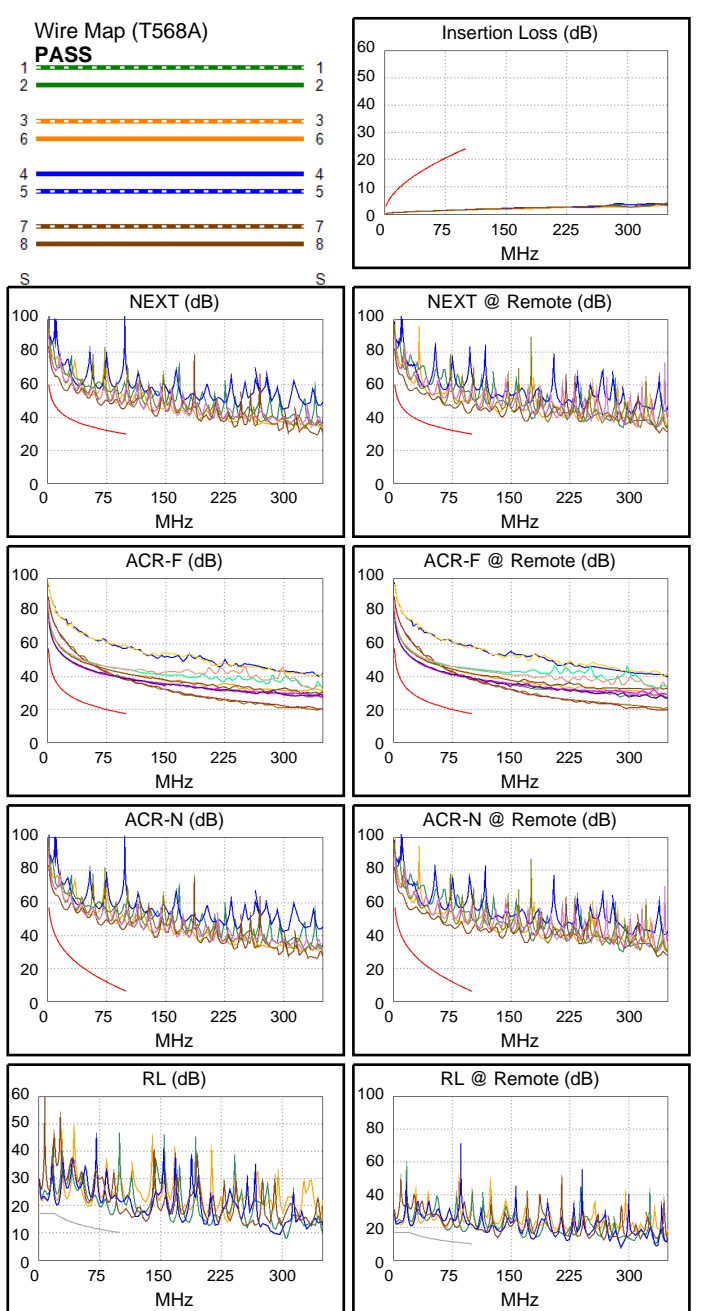
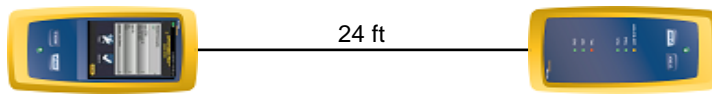
Date / Time: 05/29/2017 02:08:25 PM  
**Headroom 12.3 dB (NEXT 36-45)**  
**Test Limit: TIA Cat 5e Channel (+All)**  
 Cable Type: Cat 5e U/UTP  
 NVP: 69.0%

Operator: GERALDO  
 Software Version: V3.0 Build 6  
 Limits Version: V3.0  
 Calibration Date:  
 Main (Module): 06/06/2013  
 Remote (Module): 06/04/2013

**Test Summary: PASS**

Model: DSX-5000  
 Main S/N: 2420012  
 Remote S/N: 2420016  
 Main Adapter: DSX-PLA004  
 Remote Adapter: DSX-PLA004

Length (ft), Limit 328	[Pair 36]	24
Prop. Delay (ns), Limit 555	[Pair 45]	37
Delay Skew (ns), Limit 50	[Pair 12]	1
Resistance (ohms)	[Pair 36]	1.6
Resist. Unbal. (ohms), Limit 0.20	[Pair 36]	0.11
Insertion Loss Margin (dB)	[Pair 78]	22.4
Frequency (MHz)	[Pair 78]	100.0
Limit (dB)	[Pair 78]	24.0



Worst Case Margin Worst Case Value

<b>PASS</b>	MAIN	SR	MAIN	SR
Worst Pair	36-45	36-45	36-45	36-45
<b>NEXT (dB)</b>	14.6	12.3	14.9	12.4
Freq. (MHz)	67.0	95.0	95.8	96.3
Limit (dB)	33.1	30.5	30.4	30.4
Worst Pair	36	36	36	36
<b>PS NEXT (dB)</b>	15.8	13.7	16.1	13.8
Freq. (MHz)	66.3	95.0	95.8	95.5
Limit (dB)	30.2	27.5	27.4	27.4

<b>PASS</b>	MAIN	SR	MAIN	SR
Worst Pair	36-45	36-45	45-36	36-45
<b>ACR-F (dB)</b>	20.6	20.6	20.6	20.6
Freq. (MHz)	98.8	100.0	100.0	100.0
Limit (dB)	17.5	17.4	17.4	17.4
Worst Pair	36	36	36	36
<b>PS ACR-F (dB)</b>	20.2	20.2	20.2	20.2
Freq. (MHz)	100.0	100.0	100.0	100.0
Limit (dB)	14.4	14.4	14.4	14.4

<b>N/A</b>	MAIN	SR	MAIN	SR
Worst Pair	36-45	36-45	36-45	36-45
<b>ACR-N (dB)</b>	23.2	22.3	36.8	34.5
Freq. (MHz)	5.4	3.3	95.8	96.3
Limit (dB)	46.3	51.0	7.0	6.8
Worst Pair	45	36	36	36
<b>PS ACR-N (dB)</b>	24.6	23.7	38.0	35.7
Freq. (MHz)	5.4	6.3	95.8	95.5
Limit (dB)	43.3	41.8	4.0	4.0

<b>N/A</b>	MAIN	SR	MAIN	SR
Worst Pair	45	45	36	36
<b>RL (dB)</b>	3.6	4.4	6.0	7.0
Freq. (MHz)	22.6	22.6	90.3	90.0
Limit (dB)	16.5	16.5	10.5	10.5

Compliant Network Standards:  
 10BASE-T      100BASE-TX      100BASE-T4  
 1000BASE-T    ATM-25            ATM-51  
 ATM-155      100VG-AnyLan    TR-4  
 TR-16 Active    TR-16 Passive



**Cable ID: 042**

Date / Time: 05/29/2017 02:08:25 PM  
**Headroom 12.3 dB (NEXT 36-45)**  
**Test Limit: TIA Cat 5e Channel (+All)**  
 Cable Type: Cat 5e U/UTP  
 NVP: 69.0%

Operator: GERALDO  
 Software Version: V3.0 Build 6  
 Limits Version: V3.0  
 Calibration Date:  
 Main (Module): 06/06/2013  
 Remote (Module): 06/04/2013

**Test Summary: PASS**

Model: DSX-5000  
 Main S/N: 2420012  
 Remote S/N: 2420016  
 Main Adapter: DSX-PLA004  
 Remote Adapter: DSX-PLA004

Worst Case Margin		Worst Case Value	
N/A	MAIN	SR	MAIN SR
Worst Pair			45 45
<b>TCL (dB)</b>			19.1 23.8
Freq. (MHz)			339.0 337.0
Limit (dB)			
N/A	MAIN	SR	MAIN SR
Worst Pair			78-36 78-36
<b>CDNEXT (dB)</b>			16.2 17.8
Freq. (MHz)			350.0 319.0
Limit (dB)			
N/A	MAIN	SR	MAIN SR
Worst Pair			36 36
<b>CMRL (dB)</b>			3.7 5.1
Freq. (MHz)			279.0 247.0
Limit (dB)			
N/A	MAIN	SR	MAIN SR
Worst Pair			45 45
<b>ELTCTL (dB)</b>			18.9 16.4
Freq. (MHz)			288.0 322.0
Limit (dB)			

