



Cable ID: 038

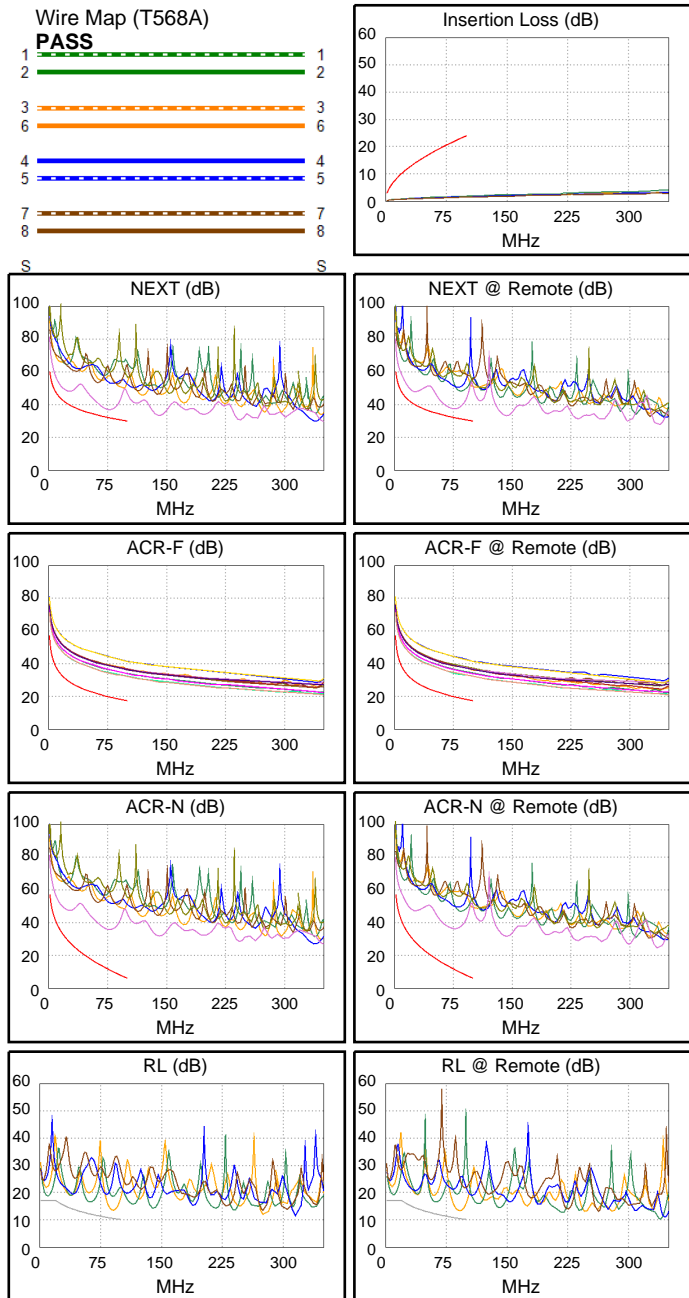
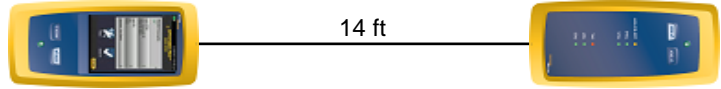
Date / Time: 05/29/2017 02:02:39 PM
Headroom 4.9 dB (NEXT 45-78)
Test Limit: TIA Cat 5e Channel (+All)
 Cable Type: Cat 5e U/UTP
 NVP: 69.0%

Operator: GERALDO
 Software Version: V3.0 Build 6
 Limits Version: V3.0
 Calibration Date:
 Main (Module): 06/06/2013
 Remote (Module): 06/04/2013

Test Summary: FAIL

Model: DSX-5000
 Main S/N: 2420012
 Remote S/N: 2420016
 Main Adapter: DSX-PLA004
 Remote Adapter: DSX-PLA004

Length (ft), Limit 328	[Pair 12]	14
Prop. Delay (ns), Limit 555	[Pair 36]	22
Delay Skew (ns), Limit 50	[Pair 36]	1
Resistance (ohms)	[Pair 36]	2.3
Resist. Unbal. (ohms), Limit 0.20	[Pair 36]	0.22 F
Insertion Loss Margin (dB)	[Pair 36]	22.3
Frequency (MHz)	[Pair 36]	100.0
Limit (dB)	[Pair 36]	24.0



Worst Case Margin Worst Case Value

PASS	MAIN	SR	MAIN	SR
Worst Pair	45-78	45-78	45-78	45-78
NEXT (dB)	4.9	5.3	5.1	5.7
Freq. (MHz)	76.5	74.8	78.3	78.0
Limit (dB)	32.1	32.3	31.9	31.9
Worst Pair	78	78	78	45
PS NEXT (dB)	7.8	8.1	8.0	8.6
Freq. (MHz)	76.5	74.8	78.3	79.3
Limit (dB)	29.1	29.3	28.9	28.8

PASS	MAIN	SR	MAIN	SR
Worst Pair	78-45	45-78	78-45	45-78
ACR-F (dB)	14.2	14.3	14.9	15.0
Freq. (MHz)	81.8	79.8	100.0	100.0
Limit (dB)	19.2	19.4	17.4	17.4
Worst Pair	45	45	45	45
PS ACR-F (dB)	14.3	14.3	14.8	14.9
Freq. (MHz)	1.5	2.1	100.0	100.0
Limit (dB)	50.9	47.9	14.4	14.4

N/A	MAIN	SR	MAIN	SR
Worst Pair	45-78	45-78	45-78	45-78
ACR-N (dB)	15.7	16.3	24.9	25.4
Freq. (MHz)	12.1	4.8	78.3	78.0
Limit (dB)	37.8	47.5	10.9	11.0
Worst Pair	45	45	45	45
PS ACR-N (dB)	18.5	18.8	27.8	28.4
Freq. (MHz)	10.4	4.8	78.3	79.3
Limit (dB)	36.5	44.5	7.9	7.7

N/A	MAIN	SR	MAIN	SR
Worst Pair	36	36	12	12
RL (dB)	1.6	2.2	3.1	2.9
Freq. (MHz)	10.0	9.8	91.5	91.8
Limit (dB)	17.0	17.0	10.4	10.4



Cable ID: 038

Date / Time: 05/29/2017 02:02:39 PM
Headroom 4.9 dB (NEXT 45-78)
Test Limit: TIA Cat 5e Channel (+All)
 Cable Type: Cat 5e U/UTP
 NVP: 69.0%

Operator: GERALDO
 Software Version: V3.0 Build 6
 Limits Version: V3.0
 Calibration Date:
 Main (Module): 06/06/2013
 Remote (Module): 06/04/2013

Test Summary: FAIL

Model: DSX-5000
 Main S/N: 2420012
 Remote S/N: 2420016
 Main Adapter: DSX-PLA004
 Remote Adapter: DSX-PLA004

Worst Case Margin		Worst Case Value	
N/A	MAIN	SR	MAIN SR
Worst Pair			45 45
TCL (dB)			20.5 21.8
Freq. (MHz)			329.0 348.0
Limit (dB)			
N/A	MAIN	SR	MAIN SR
Worst Pair			12-36 12-36
CDNEXT (dB)			16.8 18.5
Freq. (MHz)			329.0 303.0
Limit (dB)			
N/A	MAIN	SR	MAIN SR
Worst Pair			36 36
CMRL (dB)			4.6 4.5
Freq. (MHz)			282.0 336.0
Limit (dB)			
N/A	MAIN	SR	MAIN SR
Worst Pair			12 12
ELTCTL (dB)			19.6 18.6
Freq. (MHz)			348.0 350.0
Limit (dB)			

