



Cable ID: 037

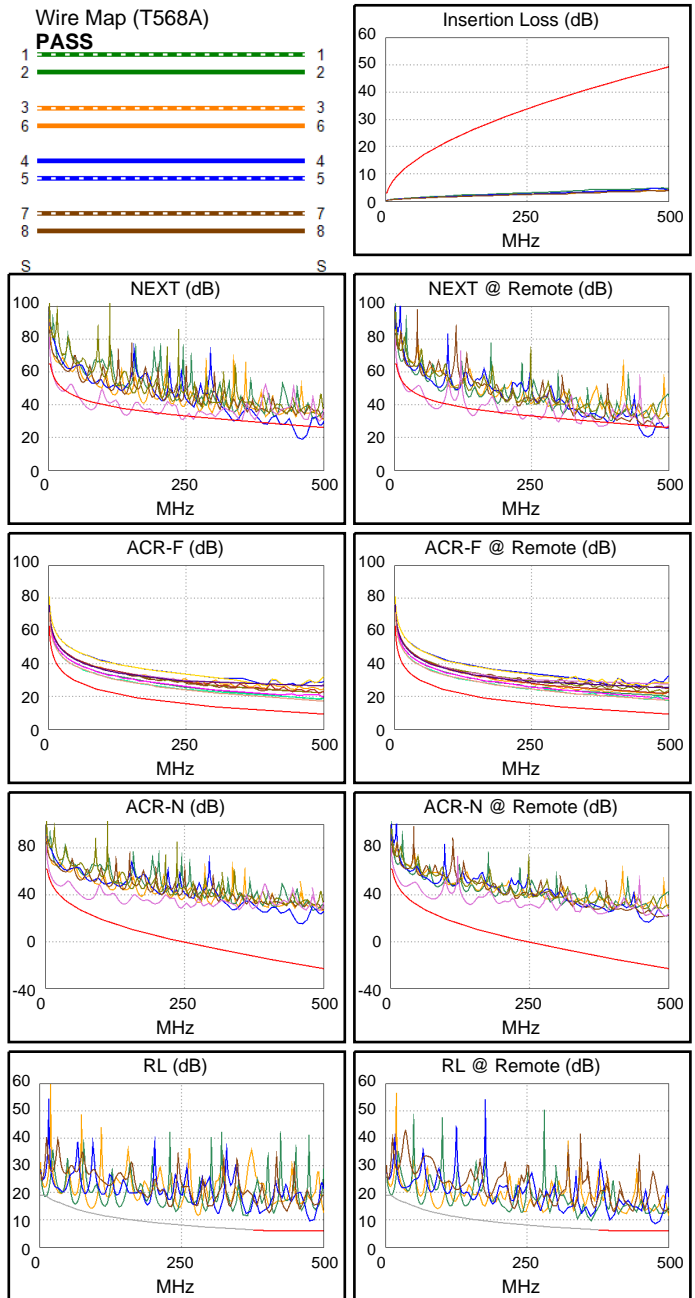
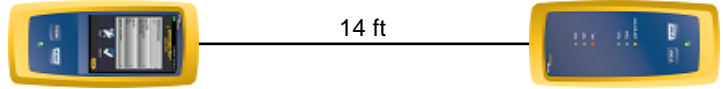
Date / Time: 05/29/2017 02:02:00 PM
Headroom -8.4 dB (NEXT 12-78)
Test Limit: TIA Cat 6A Channel
 Cable Type: Cat 6 U/UTP
 NVP: 69.0%

Operator: GERALDO
 Software Version: V3.0 Build 6
 Limits Version: V3.0
 Calibration Date:
 Main (Module): 06/06/2013
 Remote (Module): 06/04/2013

Test Summary: FAIL

Model: DSX-5000
 Main S/N: 2420012
 Remote S/N: 2420016
 Main Adapter: DSX-PLA004
 Remote Adapter: DSX-PLA004

Length (ft), Limit 328	[Pair 12]	14
Prop. Delay (ns), Limit 555	[Pair 36]	22
Delay Skew (ns), Limit 50	[Pair 36]	1
Resistance (ohms)	[Pair 36]	2.5
Insertion Loss Margin (dB)	[Pair 45]	43.2
Frequency (MHz)	[Pair 45]	480.0
Limit (dB)	[Pair 45]	48.2



	Worst Case Margin		Worst Case Value	
FAIL	MAIN	SR	MAIN	SR
Worst Pair	12-78	12-78	12-78	12-78
NEXT (dB)	-8.4 F	-6.7 F	-8.4	-6.7
Freq. (MHz)	459.0	463.0	459.0	463.0
Limit (dB)	27.1	27.0	27.1	27.0
Worst Pair	78	78	78	78
PS NEXT (dB)	-5.7 F	-5.1 F	-5.7	-5.1
Freq. (MHz)	460.0	463.0	460.0	463.0
Limit (dB)	24.2	24.1	24.2	24.1
PASS	MAIN	SR	MAIN	SR
Worst Pair	78-45	78-45	78-45	45-78
ACR-F (dB)	7.7	8.1	7.7	8.3
Freq. (MHz)	495.0	489.0	495.0	498.0
Limit (dB)	9.4	9.5	9.4	9.3
Worst Pair	45	45	45	45
PS ACR-F (dB)	7.5	8.3	7.5	8.5
Freq. (MHz)	492.0	1.0	492.0	492.0
Limit (dB)	6.4	60.3	6.4	6.4
N/A	MAIN	SR	MAIN	SR
Worst Pair	45-78	45-78	12-78	12-78
ACR-N (dB)	5.3	6.2	34.7	36.6
Freq. (MHz)	12.4	18.9	459.0	462.0
Limit (dB)	47.9	43.2	-19.9	-20.2
Worst Pair	45	45	78	78
PS ACR-N (dB)	7.8	8.6	37.5	38.2
Freq. (MHz)	12.4	17.4	460.0	462.0
Limit (dB)	45.3	41.5	-22.9	-23.1
PASS	MAIN	SR	MAIN	SR
Worst Pair	45	45	45	45
RL (dB)	3.2	2.5	3.2	2.5
Freq. (MHz)	479.0	477.0	479.0	477.0
Limit (dB)	6.0	6.0	6.0	6.0