



Cable ID: 035

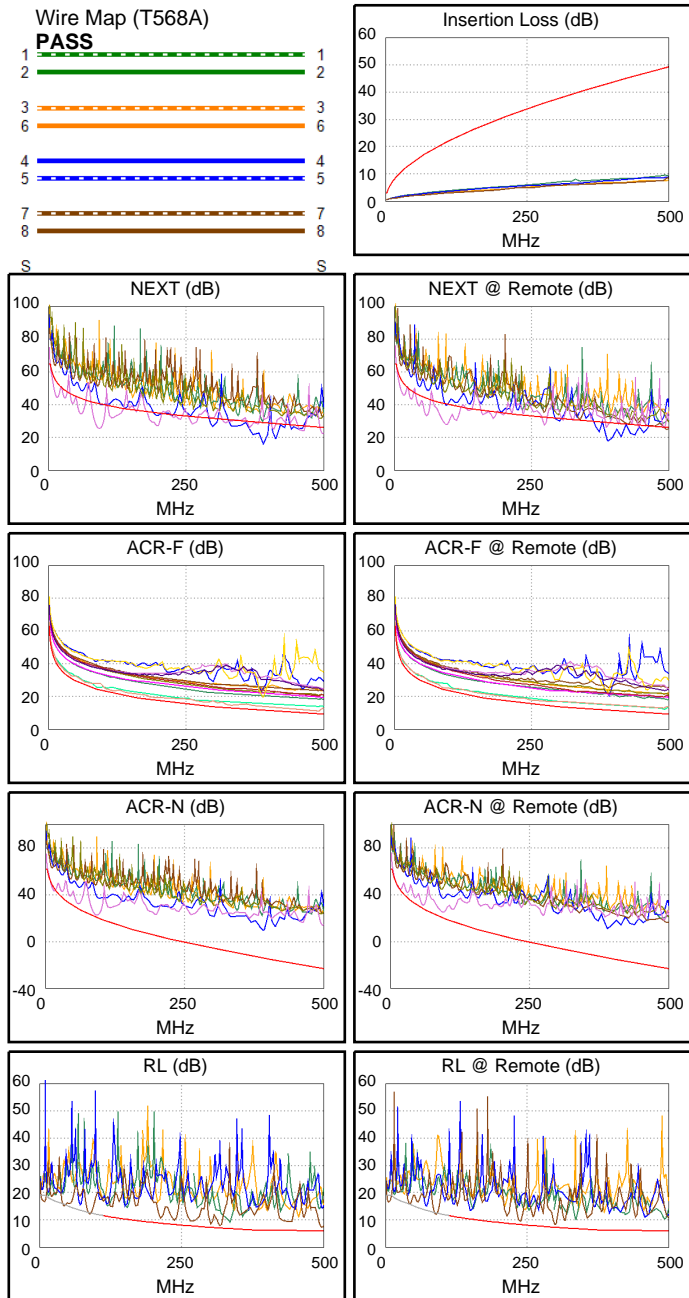
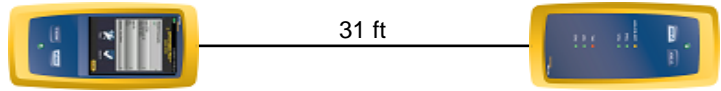
Date / Time: 05/29/2017 01:57:09 PM
Headroom -15.1 dB (NEXT 45-78)
Test Limit: TIA Cat 6A Channel
 Cable Type: Cat 6 U/UTP
 NVP: 69.0%

Operator: GERALDO
 Software Version: V3.0 Build 6
 Limits Version: V3.0
 Calibration Date:
 Main (Module): 06/06/2013
 Remote (Module): 06/04/2013

Test Summary: FAIL

Model: DSX-5000
 Main S/N: 2420012
 Remote S/N: 2420016
 Main Adapter: DSX-PLA004
 Remote Adapter: DSX-PLA004

Length (ft), Limit 328	[Pair 78]	31
Prop. Delay (ns), Limit 555	[Pair 36]	47
Delay Skew (ns), Limit 50	[Pair 36]	2
Resistance (ohms)	[Pair 12]	4.4
Insertion Loss Margin (dB)	[Pair 36]	39.5
Frequency (MHz)	[Pair 36]	494.0
Limit (dB)	[Pair 36]	49.0



	Worst Case Margin		Worst Case Value	
FAIL	MAIN	SR	MAIN	SR
Worst Pair	45-78	45-78	12-78	12-78
NEXT (dB)	-15.1 F	-12.5 F	-13.1	-11.8
Freq. (MHz)	91.8	94.3	391.0	392.0
Limit (dB)	40.6	40.4	29.0	29.0
Worst Pair	78	78	12	78
PS NEXT (dB)	-12.3 F	-10.0 F	-10.4	-9.4
Freq. (MHz)	92.5	93.8	391.0	391.0
Limit (dB)	37.7	37.6	26.1	26.1
PASS	MAIN	SR	MAIN	SR
Worst Pair	78-45	78-45	78-45	45-78
ACR-F (dB)	1.0*	1.0	1.5	2.7
Freq. (MHz)	457.0	91.3	490.0	492.0
Limit (dB)	10.1	24.1	9.5	9.4
Worst Pair	45	45	45	45
PS ACR-F (dB)	3.1	3.2	3.4	4.6
Freq. (MHz)	457.0	91.3	490.0	486.0
Limit (dB)	7.1	21.1	6.5	6.5
N/A	MAIN	SR	MAIN	SR
Worst Pair	45-78	45-78	12-78	12-78
ACR-N (dB)	-2.7	-0.5	23.7	25.0
Freq. (MHz)	12.6	12.6	391.0	392.0
Limit (dB)	47.7	47.7	-14.1	-14.2
Worst Pair	45	45	12	12
PS ACR-N (dB)	-0.3	1.8	25.9	27.4
Freq. (MHz)	13.8	14.1	391.0	393.0
Limit (dB)	44.1	43.8	-17.1	-17.2
PASS	MAIN	SR	MAIN	SR
Worst Pair	78	78	78	78
RL (dB)	0.8	0.9	1.3	1.0
Freq. (MHz)	318.0	237.0	497.0	300.0
Limit (dB)	7.0	8.3	6.0	7.2

* Measurement is within the accuracy limits of the instrument.