



Cable ID: 034

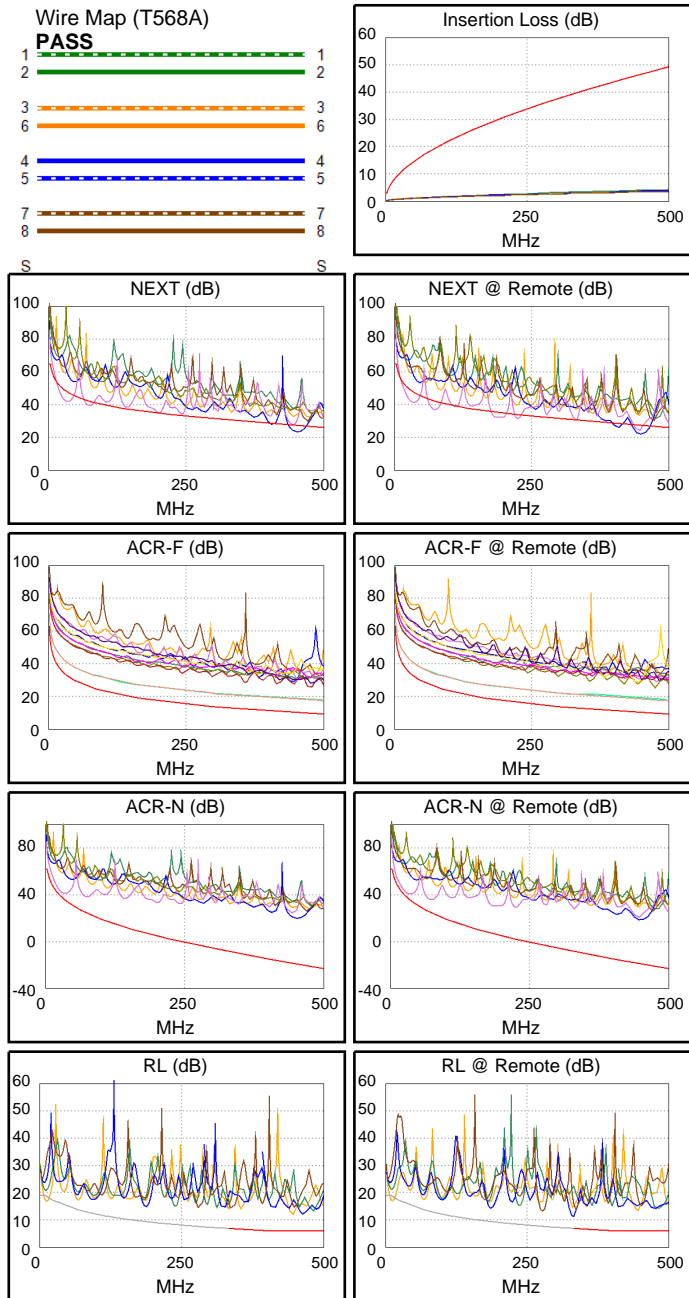
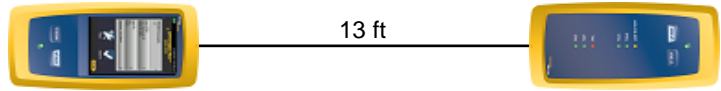
Date / Time: 05/29/2017 01:54:59 PM
Headroom -6.7 dB (NEXT 45-78)
Test Limit: TIA Cat 6A Channel
 Cable Type: Cat 6 U/UTP
 NVP: 69.0%

Operator: GERALDO
 Software Version: V3.0 Build 6
 Limits Version: V3.0
 Calibration Date:
 Main (Module): 06/06/2013
 Remote (Module): 06/04/2013

Test Summary: FAIL

Model: DSX-5000
 Main S/N: 2420012
 Remote S/N: 2420016
 Main Adapter: DSX-PLA004
 Remote Adapter: DSX-PLA004

Length (ft), Limit 328	[Pair 45]	13
Prop. Delay (ns), Limit 555	[Pair 12]	20
Delay Skew (ns), Limit 50	[Pair 12]	1
Resistance (ohms)	[Pair 36]	1.9
Insertion Loss Margin (dB)	[Pair 36]	43.6
Frequency (MHz)	[Pair 36]	478.0
Limit (dB)	[Pair 36]	48.1



	Worst Case Margin		Worst Case Value	
FAIL	MAIN	SR	MAIN	SR
Worst Pair	45-78	45-78	12-78	12-78
NEXT (dB)	-6.2 F	-6.7 F	-3.9	-5.4
Freq. (MHz)	30.3	31.5	454.0	447.0
Limit (dB)	48.7	48.4	27.2	27.4
Worst Pair	78	78	78	78
PS NEXT (dB)	-3.5 F	-4.8 F	-2.3	-4.7
Freq. (MHz)	31.8	445.0	449.0	446.0
Limit (dB)	45.6	24.6	24.5	24.5
PASS	MAIN	SR	MAIN	SR
Worst Pair	45-78	78-45	78-45	78-45
ACR-F (dB)	6.8	6.7	7.7	6.8
Freq. (MHz)	447.0	447.0	500.0	449.0
Limit (dB)	10.3	10.3	9.3	10.2
Worst Pair	78	45	45	45
PS ACR-F (dB)	9.4	9.4	10.3	9.7
Freq. (MHz)	447.0	447.0	500.0	477.0
Limit (dB)	7.3	7.3	6.3	6.7
N/A	MAIN	SR	MAIN	SR
Worst Pair	45-78	45-78	12-78	12-78
ACR-N (dB)	4.1	3.5	39.2	37.5
Freq. (MHz)	28.0	27.8	454.0	447.0
Limit (dB)	38.4	38.5	-19.5	-19.0
Worst Pair	45	45	78	78
PS ACR-N (dB)	6.7	6.1	40.7	38.3
Freq. (MHz)	26.5	26.5	449.0	447.0
Limit (dB)	36.4	36.4	-22.0	-21.9
PASS	MAIN	SR	MAIN	SR
Worst Pair	12	45	12	45
RL (dB)	5.9	4.4	5.9	4.4
Freq. (MHz)	446.0	332.0	446.0	332.0
Limit (dB)	6.0	6.8	6.0	6.8