



**Cable ID: 033**

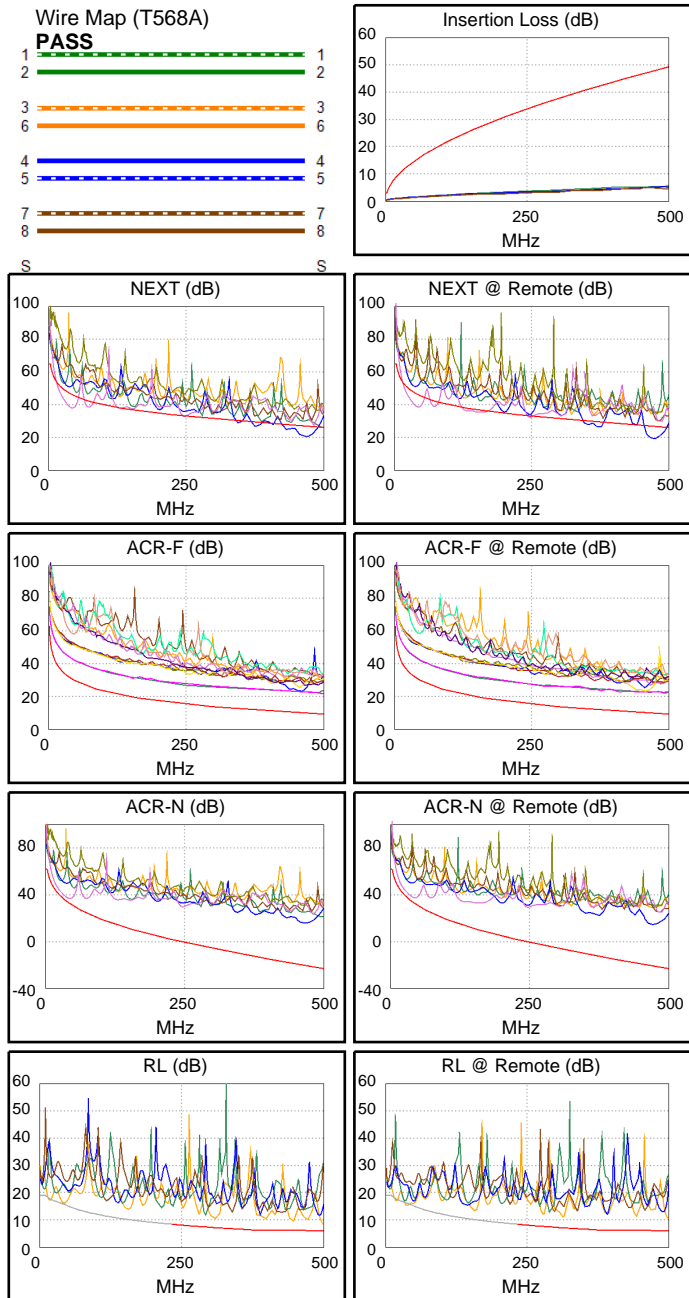
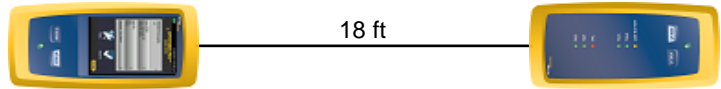
Date / Time: 05/29/2017 01:54:07 PM  
**Headroom -8.3 dB (NEXT 45-78)**  
**Test Limit: TIA Cat 6A Channel**  
 Cable Type: Cat 6 U/UTP  
 NVP: 69.0%

Operator: GERALDO  
 Software Version: V3.0 Build 6  
 Limits Version: V3.0  
 Calibration Date:  
 Main (Module): 06/06/2013  
 Remote (Module): 06/04/2013

**Test Summary: FAIL**

Model: DSX-5000  
 Main S/N: 2420012  
 Remote S/N: 2420016  
 Main Adapter: DSX-PLA004  
 Remote Adapter: DSX-PLA004

Length (ft), Limit 328	[Pair 12]	18
Prop. Delay (ns), Limit 555	[Pair 36]	27
Delay Skew (ns), Limit 50	[Pair 12]	0
Resistance (ohms)	[Pair 45]	5.7
Insertion Loss Margin (dB)	[Pair 12]	43.5
Frequency (MHz)	[Pair 12]	500.0
Limit (dB)	[Pair 12]	49.3



	Worst Case Margin		Worst Case Value	
<b>FAIL</b>	MAIN	SR	MAIN	SR
Worst Pair	45-78	12-78	12-78	12-78
<b>NEXT (dB)</b>	<b>-8.3F</b>	<b>-7.7F</b>	-6.3	-7.6
Freq. (MHz)	41.5	473.0	470.0	474.0
Limit (dB)	46.4	26.8	26.8	26.7
Worst Pair	78	78	12	12
<b>PS NEXT (dB)</b>	<b>-5.8F</b>	<b>-5.2F</b>	-3.7	-4.9
Freq. (MHz)	41.3	41.8	470.0	474.0
Limit (dB)	43.7	43.6	23.9	23.8
<b>PASS</b>	MAIN	SR	MAIN	SR
Worst Pair	12-45	45-12	45-12	45-12
<b>ACR-F (dB)</b>	11.3	11.2	12.3	12.2
Freq. (MHz)	312.0	311.0	498.0	476.0
Limit (dB)	13.4	13.4	9.3	9.7
Worst Pair	45	12	12	12
<b>PS ACR-F (dB)</b>	13.3	12.1	14.4	12.2
Freq. (MHz)	359.0	457.0	498.0	460.0
Limit (dB)	9.2	7.1	6.3	7.0
<b>N/A</b>	MAIN	SR	MAIN	SR
Worst Pair	45-78	45-78	12-78	12-78
<b>ACR-N (dB)</b>	3.3	3.9	36.5	35.7
Freq. (MHz)	37.3	36.3	469.0	474.0
Limit (dB)	34.6	35.0	-20.8	-21.2
Worst Pair	78	45	12	12
<b>PS ACR-N (dB)</b>	5.7	6.4	38.6	37.6
Freq. (MHz)	37.3	33.3	470.0	473.0
Limit (dB)	31.9	33.4	-23.7	-24.0
<b>PASS</b>	MAIN	SR	MAIN	SR
Worst Pair	12	12	12	12
<b>RL (dB)</b>	2.2	4.1	2.2	4.4
Freq. (MHz)	500.0	314.0	500.0	500.0
Limit (dB)	6.0	7.0	6.0	6.0