

Cable ID: 031

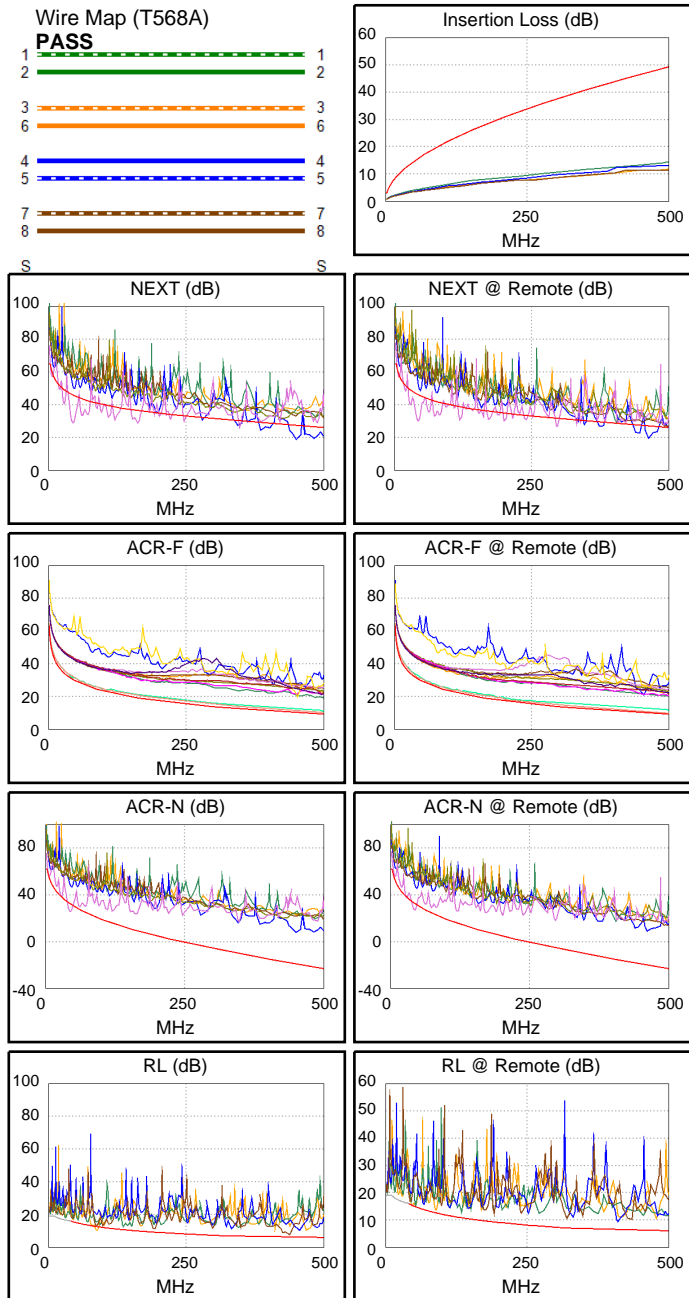
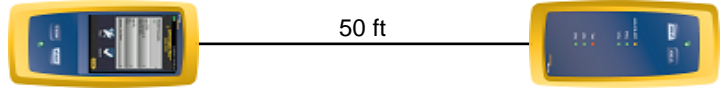
Date / Time: 05/29/2017 01:51:07 PM
Headroom -17.1 dB (NEXT 45-78)
Test Limit: TIA Cat 6A Channel
 Cable Type: Cat 6 U/UTP
 NVP: 69.0%

Operator: GERALDO
 Software Version: V3.0 Build 6
 Limits Version: V3.0
 Calibration Date:
 Main (Module): 06/06/2013
 Remote (Module): 06/04/2013

Test Summary: FAIL

Model: DSX-5000
 Main S/N: 2420012
 Remote S/N: 2420016
 Main Adapter: DSX-PLA004
 Remote Adapter: DSX-PLA004

| | | |
|-----------------------------|-----------|-------|
| Length (ft), Limit 328 | [Pair 12] | 50 |
| Prop. Delay (ns), Limit 555 | [Pair 36] | 74 |
| Delay Skew (ns), Limit 50 | [Pair 36] | 1 |
| Resistance (ohms) | [Pair 36] | 6.6 |
| | | |
| Insertion Loss Margin (dB) | [Pair 36] | 35.0 |
| Frequency (MHz) | [Pair 36] | 500.0 |
| Limit (dB) | [Pair 36] | 49.3 |



| | Worst Case Margin | | Worst Case Value | |
|----------------------|-------------------|----------------|------------------|-------|
| FAIL | MAIN | SR | MAIN | SR |
| Worst Pair | 45-78 | 45-78 | 12-78 | 12-78 |
| NEXT (dB) | -17.1 F | -16.1 F | -9.6 | -7.8 |
| Freq. (MHz) | 43.8 | 42.5 | 453.0 | 464.0 |
| Limit (dB) | 46.0 | 46.2 | 27.3 | 27.0 |
| Worst Pair | 45 | 45 | 12 | 12 |
| PS NEXT (dB) | -14.4 F | -13.3 F | -6.8 | -5.4 |
| Freq. (MHz) | 43.5 | 43.0 | 453.0 | 464.0 |
| Limit (dB) | 43.3 | 43.4 | 24.4 | 24.1 |
| FAIL | MAIN | SR | MAIN | SR |
| Worst Pair | 78-45 | 78-45 | 78-45 | 78-45 |
| ACR-F (dB) | 0.0* | -0.8 F | 0.3 | 0.2 |
| Freq. (MHz) | 413.0 | 409.0 | 487.0 | 500.0 |
| Limit (dB) | 10.9 | 11.0 | 9.5 | 9.3 |
| Worst Pair | 45 | 45 | 45 | 45 |
| PS ACR-F (dB) | 2.6 | 1.8* | 2.9 | 2.6 |
| Freq. (MHz) | 413.0 | 409.0 | 500.0 | 500.0 |
| Limit (dB) | 7.9 | 8.0 | 6.3 | 6.3 |
| N/A | MAIN | SR | MAIN | SR |
| Worst Pair | 45-78 | 45-78 | 12-78 | 12-78 |
| ACR-N (dB) | -6.6 | -5.8 | 26.1 | 28.3 |
| Freq. (MHz) | 44.0 | 42.5 | 453.0 | 464.0 |
| Limit (dB) | 32.3 | 32.8 | -19.5 | -20.4 |
| Worst Pair | 45 | 45 | 12 | 12 |
| PS ACR-N (dB) | -4.1 | -3.1 | 28.6 | 30.3 |
| Freq. (MHz) | 43.5 | 43.0 | 453.0 | 465.0 |
| Limit (dB) | 29.7 | 29.9 | -22.4 | -23.3 |
| FAIL | MAIN | SR | MAIN | SR |
| Worst Pair | 12 | 12 | 78 | 45 |
| RL (dB) | -2.4 F | -0.4 F | 0.9 | 3.3 |
| Freq. (MHz) | 88.0 | 46.0 | 436.0 | 410.0 |
| Limit (dB) | 12.6 | 15.4 | 6.0 | 6.0 |

* Measurement is within the accuracy limits of the instrument.