



Cable ID: 027

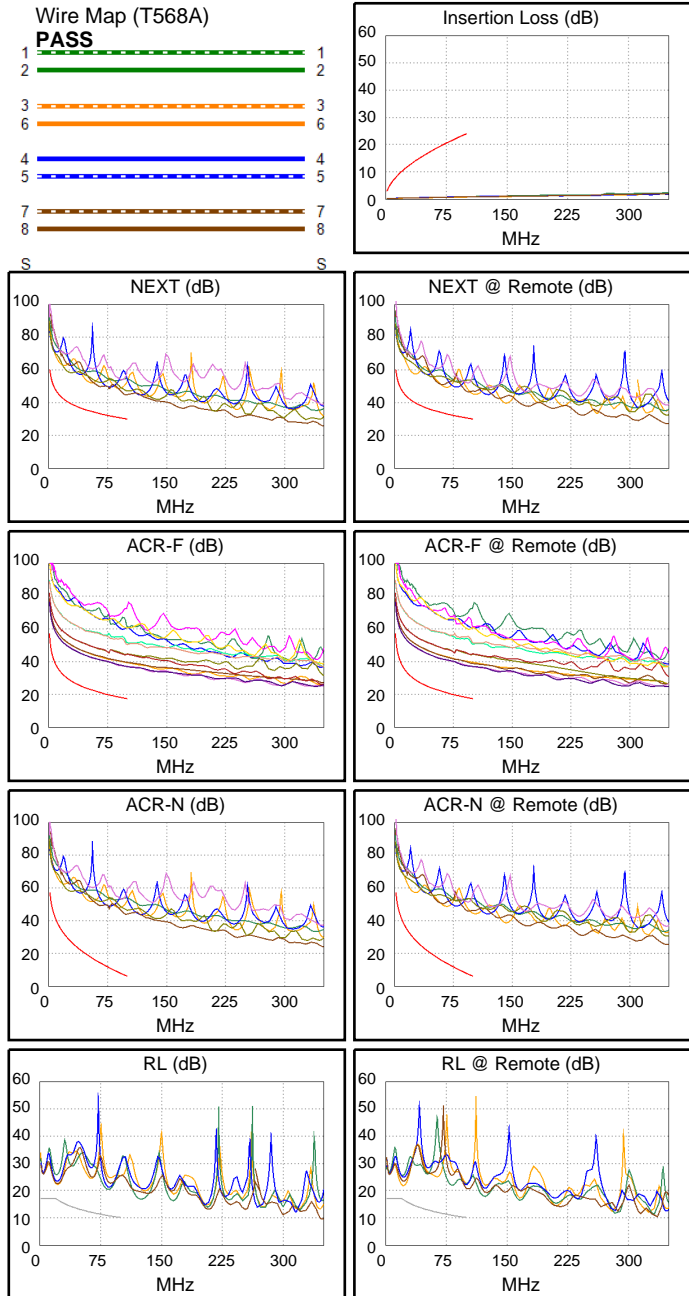
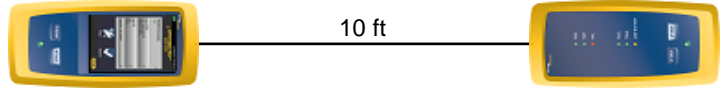
Date / Time: 05/29/2017 01:40:43 PM
Headroom 14.4 dB (NEXT 36-45)
Test Limit: TIA Cat 5e Channel (+All)
 Cable Type: Cat 5e U/UTP
 NVP: 69.0%

Operator: GERALDO
 Software Version: V3.0 Build 6
 Limits Version: V3.0
 Calibration Date:
 Main (Module): 06/06/2013
 Remote (Module): 06/04/2013

Test Summary: PASS

Model: DSX-5000
 Main S/N: 2420012
 Remote S/N: 2420016
 Main Adapter: DSX-PLA004
 Remote Adapter: DSX-PLA004

Length (ft), Limit 328	[Pair 12]	10
Prop. Delay (ns), Limit 555	[Pair 12]	15
Delay Skew (ns), Limit 50	[Pair 12]	0
Resistance (ohms)	[Pair 78]	0.9
Resist. Unbal. (ohms), Limit 0.20	[Pair 78]	0.13
Insertion Loss Margin (dB)	[Pair 36]	23.2
Frequency (MHz)	[Pair 36]	100.0
Limit (dB)	[Pair 36]	24.0



Worst Case Margin Worst Case Value

PASS	MAIN	SR	MAIN	SR
Worst Pair	36-45	12-36	36-45	12-36
NEXT (dB)	14.4	15.2	14.4	15.2
Freq. (MHz)	98.3	100.0	98.3	100.0
Limit (dB)	30.2	30.1	30.2	30.1
Worst Pair	36	36	36	36
PS NEXT (dB)	15.1	15.5	15.2	15.5
Freq. (MHz)	99.0	100.0	99.3	100.0
Limit (dB)	27.2	27.1	27.1	27.1

PASS	MAIN	SR	MAIN	SR
Worst Pair	78-36	36-78	78-36	36-78
ACR-F (dB)	19.2	19.2	19.5	19.6
Freq. (MHz)	2.3	2.3	100.0	100.0
Limit (dB)	50.4	50.4	17.4	17.4
Worst Pair	36	36	36	36
PS ACR-F (dB)	19.4	19.5	19.9	20.2
Freq. (MHz)	1.4	2.1	100.0	99.3
Limit (dB)	51.6	47.9	14.4	14.5

N/A	MAIN	SR	MAIN	SR
Worst Pair	36-78	12-78	36-45	12-36
ACR-N (dB)	25.0	25.8	37.4	38.4
Freq. (MHz)	2.5	1.6	98.3	100.0
Limit (dB)	53.4	56.9	6.4	6.1
Worst Pair	78	12	36	36
PS ACR-N (dB)	25.6	26.0	38.3	38.7
Freq. (MHz)	1.9	1.6	99.3	100.0
Limit (dB)	52.8	53.9	3.2	3.1

N/A	MAIN	SR	MAIN	SR
Worst Pair	12	12	36	78
RL (dB)	5.5	5.0	9.7	10.7
Freq. (MHz)	21.6	21.1	85.3	100.0
Limit (dB)	16.7	16.8	10.7	10.0

Compliant Network Standards:
 10BASE-T 100BASE-TX 100BASE-T4
 1000BASE-T ATM-25 ATM-51
 ATM-155 100VG-AnyLan TR-4
 TR-16 Active TR-16 Passive



Cable ID: 027

Date / Time: 05/29/2017 01:40:43 PM
Headroom 14.4 dB (NEXT 36-45)
Test Limit: TIA Cat 5e Channel (+All)
 Cable Type: Cat 5e U/UTP
 NVP: 69.0%

Operator: GERALDO
 Software Version: V3.0 Build 6
 Limits Version: V3.0
 Calibration Date:
 Main (Module): 06/06/2013
 Remote (Module): 06/04/2013

Test Summary: PASS

Model: DSX-5000
 Main S/N: 2420012
 Remote S/N: 2420016
 Main Adapter: DSX-PLA004
 Remote Adapter: DSX-PLA004

Worst Case Margin		Worst Case Value	
N/A	MAIN	SR	MAIN SR
Worst Pair			78 36
TCL (dB)			18.9 22.2
Freq. (MHz)			299.0 297.0
Limit (dB)			
N/A	MAIN	SR	MAIN SR
Worst Pair			78-36 78-36
CDNEXT (dB)			13.9 15.1
Freq. (MHz)			349.0 349.0
Limit (dB)			
N/A	MAIN	SR	MAIN SR
Worst Pair			36 36
CMRL (dB)			4.3 3.6
Freq. (MHz)			269.0 230.0
Limit (dB)			
N/A	MAIN	SR	MAIN SR
Worst Pair			78 78
ELTCTL (dB)			19.8 20.4
Freq. (MHz)			326.0 298.0
Limit (dB)			

