



**Cable ID: 023**

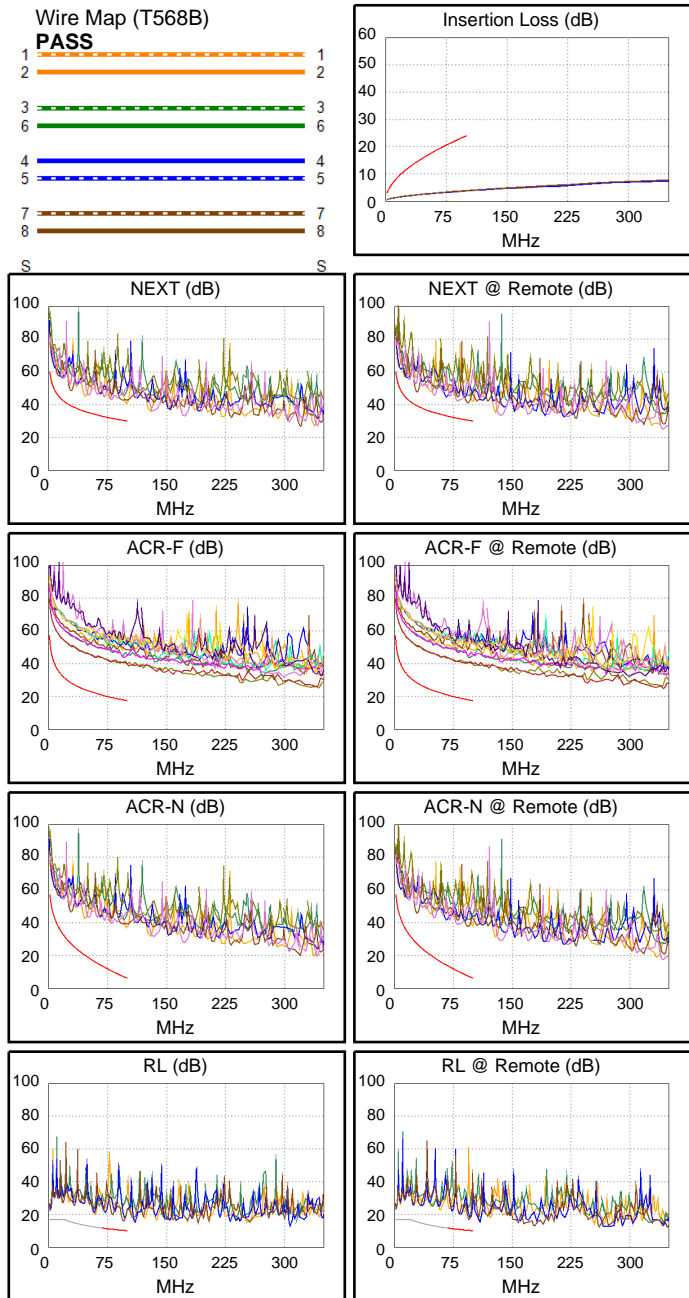
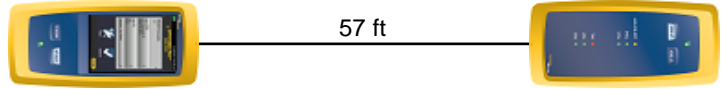
Date / Time: 01/06/2017 09:18:14 AM  
**Headroom 8.4 dB (NEXT 36-45)**  
**Test Limit: TIA Cat 5e Channel (+All)**  
 Cable Type: Cat 5e U/UTP  
 NVP: 69.0%

Operator: GERALDO  
 Software Version: V3.0 Build 6  
 Limits Version: V3.0  
 Calibration Date:  
 Main (Module): 06/06/2013  
 Remote (Module): 06/04/2013

**Test Summary: PASS**

Model: DSX-5000  
 Main S/N: 2420012  
 Remote S/N: 2420016  
 Main Adapter: DSX-CHA004  
 Remote Adapter: DSX-CHA004

Length (ft), Limit 328	[Pair 12]	57
Prop. Delay (ns), Limit 555	[Pair 78]	86
Delay Skew (ns), Limit 50	[Pair 78]	2
Resistance (ohms)	[Pair 36]	3.2
Resist. Unbal. (ohms), Limit 0.20	[Pair 78]	0.03
Insertion Loss Margin (dB)	[Pair 78]	20.2
Frequency (MHz)	[Pair 78]	100.0
Limit (dB)	[Pair 78]	24.0



**Worst Case Margin Worst Case Value**

<b>PASS</b>	MAIN	SR	MAIN	SR
Worst Pair	36-45	36-45	12-36	36-45
<b>NEXT (dB)</b>	9.2	8.4	10.4	10.7
Freq. (MHz)	28.6	28.6	99.5	94.3
Limit (dB)	39.4	39.4	30.1	30.5
Worst Pair	45	45	36	45
<b>PS NEXT (dB)</b>	10.5	10.1	11.4	12.1
Freq. (MHz)	27.8	27.6	99.5	94.5
Limit (dB)	36.6	36.6	27.1	27.5

<b>PASS</b>	MAIN	SR	MAIN	SR
Worst Pair	36-45	45-36	45-36	36-45
<b>ACR-F (dB)</b>	21.7	21.7	22.2	22.2
Freq. (MHz)	78.0	78.0	100.0	100.0
Limit (dB)	19.6	19.6	17.4	17.4
Worst Pair	45	45	45	45
<b>PS ACR-F (dB)</b>	23.7	23.8	24.4	24.0
Freq. (MHz)	77.8	80.8	100.0	100.0
Limit (dB)	16.6	16.3	14.4	14.4

<b>N/A</b>	MAIN	SR	MAIN	SR
Worst Pair	12-36	12-36	12-36	36-45
<b>ACR-N (dB)</b>	18.5	15.9	30.6	30.3
Freq. (MHz)	3.6	4.5	99.5	94.3
Limit (dB)	50.0	48.0	6.2	7.3
Worst Pair	12	12	36	45
<b>PS ACR-N (dB)</b>	18.9	16.9	31.6	31.8
Freq. (MHz)	5.0	5.4	99.5	94.5
Limit (dB)	44.0	43.3	3.2	4.2

<b>PASS</b>	MAIN	SR	MAIN	SR
Worst Pair	78	78	78	78
<b>RL (dB)</b>	5.7	6.3	5.7	6.3
Freq. (MHz)	95.8	95.0	95.8	95.0
Limit (dB)	10.2	10.2	10.2	10.2

Compliant Network Standards:  
 10BASE-T      100BASE-TX      100BASE-T4  
 1000BASE-T    ATM-25            ATM-51  
 ATM-155      100VG-AnyLan    TR-4  
 TR-16 Active    TR-16 Passive



**Cable ID: 023**

Date / Time: 01/06/2017 09:18:14 AM  
**Headroom 8.4 dB (NEXT 36-45)**  
**Test Limit: TIA Cat 5e Channel (+All)**  
 Cable Type: Cat 5e U/UTP  
 NVP: 69.0%

Operator: GERALDO  
 Software Version: V3.0 Build 6  
 Limits Version: V3.0  
 Calibration Date:  
 Main (Module): 06/06/2013  
 Remote (Module): 06/04/2013

**Test Summary: PASS**

Model: DSX-5000  
 Main S/N: 2420012  
 Remote S/N: 2420016  
 Main Adapter: DSX-CHA004  
 Remote Adapter: DSX-CHA004

Worst Case Margin		Worst Case Value	
N/A	MAIN	SR	MAIN SR
Worst Pair			12 36
<b>TCL (dB)</b>			27.2 26.7
Freq. (MHz)			325.0 309.0
Limit (dB)			
N/A	MAIN	SR	MAIN SR
Worst Pair			36-12 78-12
<b>CDNEXT (dB)</b>			23.2 21.4
Freq. (MHz)			287.0 273.0
Limit (dB)			
N/A	MAIN	SR	MAIN SR
Worst Pair			36 36
<b>CMRL (dB)</b>			4.2 4.6
Freq. (MHz)			327.0 340.0
Limit (dB)			
N/A	MAIN	SR	MAIN SR
Worst Pair			78 36
<b>ELTCTL (dB)</b>			22.2 20.9
Freq. (MHz)			215.5 294.0
Limit (dB)			

