



Cable ID: 022

Date / Time: 01/06/2017 09:16:19 AM

Headroom 6.6 dB (NEXT 36-45)

Test Limit: TIA 1005 Cat 5e Perm. Link

Cable Type: Cat 5e U/UTP

NVP: 69.0%

Operator: GERALDO

Software Version: V3.0 Build 6

Limits Version: V3.0

Calibration Date:

Main (Module): 06/06/2013

Remote (Module): 06/04/2013

Test Summary: PASS

Model: DSX-5000

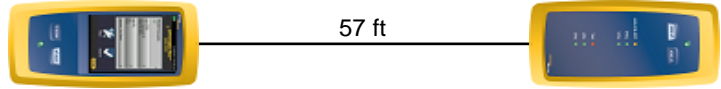
Main S/N: 2420012

Remote S/N: 2420016

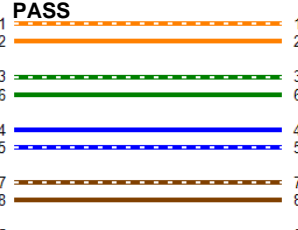
Main Adapter: DSX-CHA004

Remote Adapter: DSX-CHA004

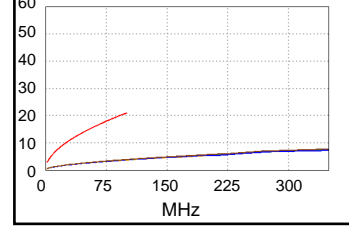
Length (ft), Limit 295	[Pair 12]	57
Prop. Delay (ns), Limit 498	[Pair 78]	86
Delay Skew (ns), Limit 44	[Pair 78]	2
Resistance (ohms)	[Pair 78]	3.3
Insertion Loss Margin (dB)	[Pair 78]	17.2
Frequency (MHz)	[Pair 78]	100.0
Limit (dB)	[Pair 78]	21.0



Wire Map (T568B)

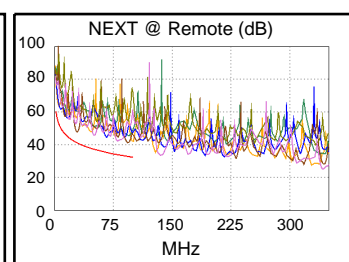
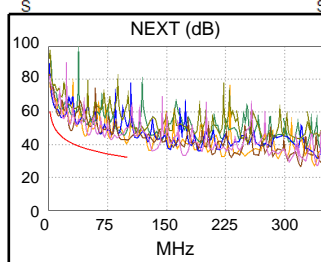


Insertion Loss (dB)

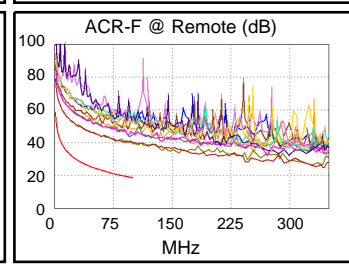
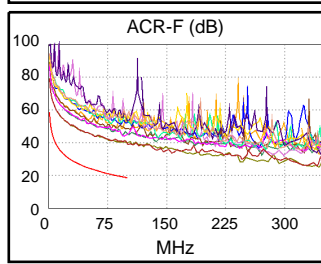


Worst Case Margin Worst Case Value

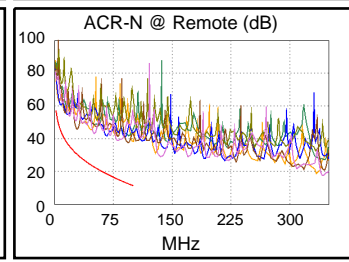
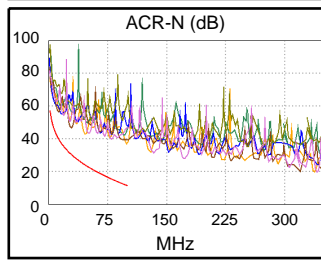
PASS	MAIN	SR	MAIN	SR
Worst Pair	36-45	36-45	12-36	36-45
NEXT (dB)	7.3	6.6	8.2	8.5
Freq. (MHz)	28.3	28.6	99.5	94.3
Limit (dB)	41.3	41.2	32.3	32.7
Worst Pair	45	45	36	45
PS NEXT (dB)	8.6	8.4	9.2	9.9
Freq. (MHz)	27.8	28.1	99.5	94.5
Limit (dB)	38.4	38.3	29.3	29.7



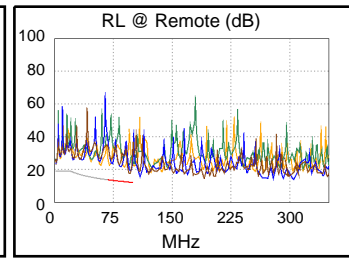
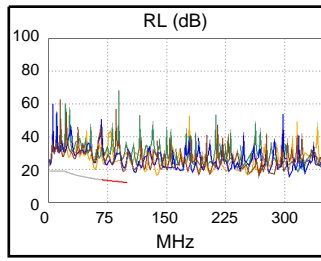
PASS	MAIN	SR	MAIN	SR
Worst Pair	36-45	45-36	45-36	36-45
ACR-F (dB)	20.3	20.3	20.8	20.8
Freq. (MHz)	77.3	77.3	100.0	100.0
Limit (dB)	20.9	20.9	18.6	18.6
Worst Pair	45	36	45	45
PS ACR-F (dB)	22.5	22.6	23.1	22.6
Freq. (MHz)	78.8	77.3	100.0	100.0
Limit (dB)	17.7	17.9	15.6	15.6



N/A	MAIN	SR	MAIN	SR
Worst Pair	36-45	12-36	12-36	36-45
ACR-N (dB)	16.1	14.2	25.4	25.2
Freq. (MHz)	28.4	4.6	99.5	94.3
Limit (dB)	30.6	49.6	11.4	12.4
Worst Pair	12	12	36	45
PS ACR-N (dB)	17.0	15.0	26.4	26.6
Freq. (MHz)	5.5	5.4	99.5	94.5
Limit (dB)	45.0	45.2	8.4	9.4



PASS	MAIN	SR	MAIN	SR
Worst Pair	78	78	78	78
RL (dB)	6.5	5.0	6.5	5.0
Freq. (MHz)	95.8	95.8	95.8	95.8
Limit (dB)	12.2	12.2	12.2	12.2



Compliant Network Standards:
10BASE-T 100BASE-TX