



Cable ID: 021

Date / Time: 12/07/2016 06:55:21 AM

Headroom 9.0 dB (NEXT 12-45)

Test Limit: 10GBASE-T

Cable Type: Cat 6A U/UTP

NVP: 68.2%

Operator: EVANDRO

Software Version: V3.0 Build 6

Limits Version: V3.0

Calibration Date:

Main (Module): 06/06/2013

Remote (Module): 06/04/2013

Test Summary: PASS

Model: DSX-5000

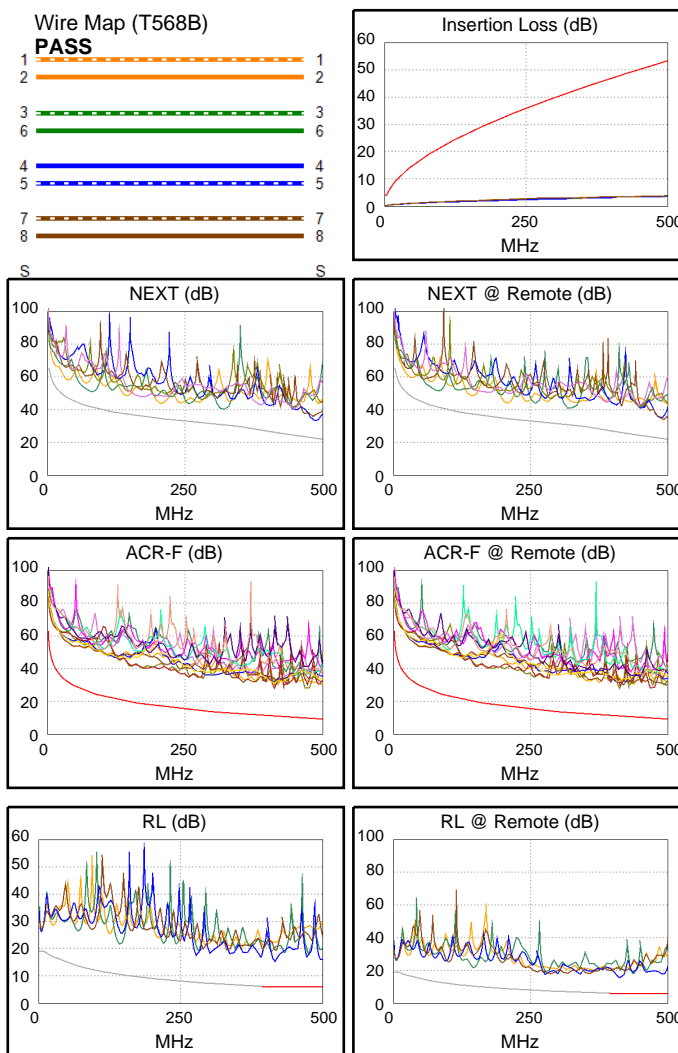
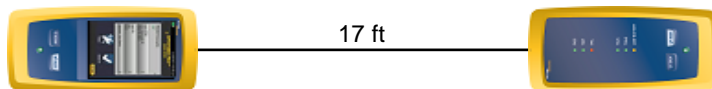
Main S/N: 2420012

Remote S/N: 2420016

Main Adapter: DSX-CHA004

Remote Adapter: DSX-CHA004

Length (ft), Limit 328	[Pair 36]	17
Prop. Delay (ns), Limit 555	[Pair 78]	26
Delay Skew (ns), Limit 50	[Pair 12]	1
Resistance (ohms), Limit 25.0	[Pair 12]	0.8
Insertion Loss Margin (dB)	[Pair 12]	49.7
Frequency (MHz)	[Pair 12]	500.0
Limit (dB)	[Pair 12]	53.4



Worst Case Margin Worst Case Value

N/A	MAIN	SR	MAIN	SR
Worst Pair	12-45	12-45	12-78	36-45
NEXT (dB)	9.0	9.3	10.7	11.9
Freq. (MHz)	320.0	320.0	487.0	493.0
Limit (dB)	31.3	31.3	22.5	22.3
Worst Pair	12	12	12	36
PS NEXT (dB)	11.1	11.1	12.0	13.1
Freq. (MHz)	204.5	324.0	488.0	494.0
Limit (dB)	31.7	28.2	20.9	20.6

PASS	MAIN	SR	MAIN	SR
Worst Pair	36-45	36-45	36-45	45-36
ACR-F (dB)	17.1	17.0	17.1	17.3
Freq. (MHz)	472.0	413.0	472.0	472.0
Limit (dB)	9.8	10.9	9.8	9.8
Worst Pair	36	36	45	36
PS ACR-F (dB)	18.6	19.5	19.4	19.5
Freq. (MHz)	414.0	472.0	472.0	472.0
Limit (dB)	7.9	6.8	6.8	6.8

PASS	MAIN	SR	MAIN	SR
Worst Pair	45	45	45	45
RL (dB)	9.3	9.3	9.3	9.3
Freq. (MHz)	417.0	414.0	417.0	414.0
Limit (dB)	6.0	6.0	6.0	6.0

Compliant Network Standards:

10BASE-T	100BASE-TX	100BASE-T4
1000BASE-T	10GBASE-T	ATM-25
ATM-51	ATM-155	100VG-AnyLan
TR-4	TR-16 Active	TR-16 Passive