



**Cable ID: 020**

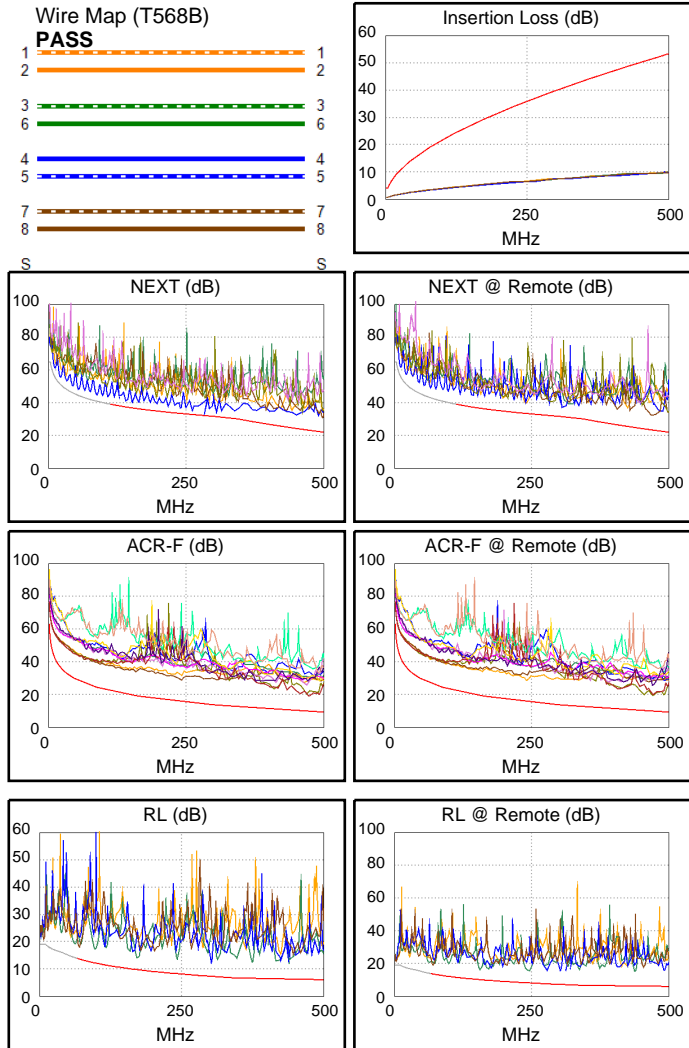
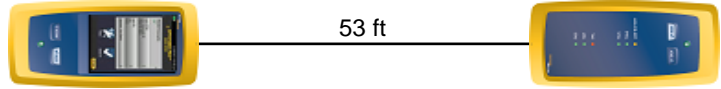
Date / Time: 12/07/2016 06:54:34 AM  
**Headroom 2.4 dB (NEXT 12-78)**  
**Test Limit: 10GBASE-T**  
 Cable Type: Cat 6A U/UTP  
 NVP: 68.2%

Operator: EVANDRO  
 Software Version: V3.0 Build 6  
 Limits Version: V3.0  
 Calibration Date:  
 Main (Module): 06/06/2013  
 Remote (Module): 06/04/2013

**Test Summary: PASS**

Model: DSX-5000  
 Main S/N: 2420012  
 Remote S/N: 2420016  
 Main Adapter: DSX-CHA004  
 Remote Adapter: DSX-CHA004

Length (ft), Limit 328	[Pair 36]	53
Prop. Delay (ns), Limit 555	[Pair 12]	81
Delay Skew (ns), Limit 50	[Pair 12]	2
Resistance (ohms), Limit 25.0	[Pair 12]	2.7
Insertion Loss Margin (dB)	[Pair 12]	43.3
Frequency (MHz)	[Pair 12]	499.0
Limit (dB)	[Pair 12]	53.3



Worst Case Margin Worst Case Value

PASS	MAIN	SR	MAIN	SR
Worst Pair	12-78	12-78	36-45	36-45
<b>NEXT (dB)</b>	2.4	5.5	8.6	9.0
Freq. (MHz)	262.0	306.0	498.0	478.0
Limit (dB)	32.8	31.6	22.1	23.0
Worst Pair	12	12	36	36
<b>PS NEXT (dB)</b>	4.6	6.2	7.9	10.6
Freq. (MHz)	306.0	240.0	498.0	499.0
Limit (dB)	28.6	30.5	20.5	20.5

PASS	MAIN	SR	MAIN	SR
Worst Pair	45-36	36-45	45-36	36-45
<b>ACR-F (dB)</b>	9.2	9.4	9.2	9.4
Freq. (MHz)	473.0	473.0	473.0	473.0
Limit (dB)	9.8	9.8	9.8	9.8
Worst Pair	36	36	36	36
<b>PS ACR-F (dB)</b>	11.3	11.9	11.3	11.9
Freq. (MHz)	472.0	470.0	472.0	470.0
Limit (dB)	6.8	6.8	6.8	6.8

PASS	MAIN	SR	MAIN	SR
Worst Pair	36	78	45	36
<b>RL (dB)</b>	3.9	5.5	5.0	9.1
Freq. (MHz)	173.0	70.0	302.0	438.0
Limit (dB)	9.6	13.5	7.2	6.0

Compliant Network Standards:  
 10BASE-T      100BASE-TX      100BASE-T4  
 1000BASE-T    10GBASE-T      ATM-25  
 ATM-51      ATM-155      100VG-AnyLan  
 TR-4      TR-16 Active      TR-16 Passive