



**Cable ID: 015**

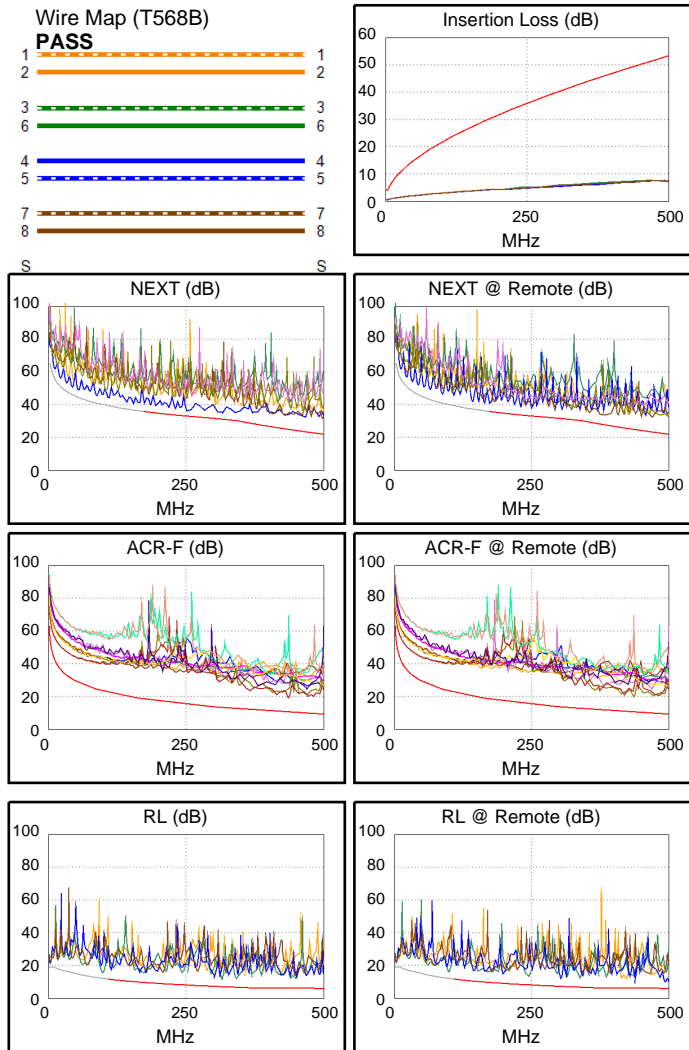
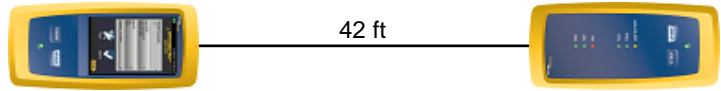
Date / Time: 12/07/2016 06:50:54 AM  
**Headroom 2.6 dB (NEXT 12-78)**  
**Test Limit: 10GBASE-T**  
 Cable Type: Cat 6A U/UTP  
 NVP: 68.2%

Operator: EVANDRO  
 Software Version: V3.0 Build 6  
 Limits Version: V3.0  
 Calibration Date:  
 Main (Module): 06/06/2013  
 Remote (Module): 06/04/2013

**Test Summary: PASS**

Model: DSX-5000  
 Main S/N: 2420012  
 Remote S/N: 2420016  
 Main Adapter: DSX-CHA004  
 Remote Adapter: DSX-CHA004

Length (ft), Limit 328	[Pair 36]	42
Prop. Delay (ns), Limit 555	[Pair 12]	66
Delay Skew (ns), Limit 50	[Pair 12]	3
Resistance (ohms), Limit 25.0	[Pair 12]	2.1
Insertion Loss Margin (dB)	[Pair 12]	45.6
Frequency (MHz)	[Pair 12]	497.0
Limit (dB)	[Pair 12]	53.2



**Worst Case Margin Worst Case Value**

PASS	MAIN	SR	MAIN	SR
Worst Pair	12-78	36-45	12-78	36-45
<b>NEXT (dB)</b>	2.6	4.0	7.0	4.0
Freq. (MHz)	262.0	376.0	447.0	376.0
Limit (dB)	32.8	28.2	24.4	28.2
Worst Pair	78	36	36	36
<b>PS NEXT (dB)</b>	5.0	5.7	9.2	6.6
Freq. (MHz)	262.0	376.0	498.0	428.0
Limit (dB)	29.8	25.6	20.5	23.3

PASS	MAIN	SR	MAIN	SR
Worst Pair	45-36	36-45	45-36	36-45
<b>ACR-F (dB)</b>	8.6	9.1	8.6	9.8
Freq. (MHz)	436.0	436.0	436.0	482.0
Limit (dB)	10.5	10.5	10.5	9.6
Worst Pair	36	45	36	36
<b>PS ACR-F (dB)</b>	11.0	11.9	11.6	12.1
Freq. (MHz)	436.0	436.0	473.0	472.0
Limit (dB)	7.5	7.5	6.8	6.8

PASS	MAIN	SR	MAIN	SR
Worst Pair	36	36	36	45
<b>RL (dB)</b>	3.5	4.0	4.5	4.0
Freq. (MHz)	98.8	98.8	315.0	493.0
Limit (dB)	12.1	12.1	7.0	6.0

Compliant Network Standards:  
 10BASE-T      100BASE-TX      100BASE-T4  
 1000BASE-T    10GBASE-T      ATM-25  
 ATM-51      ATM-155      100VG-AnyLan  
 TR-4      TR-16 Active      TR-16 Passive