



Cable ID: 008

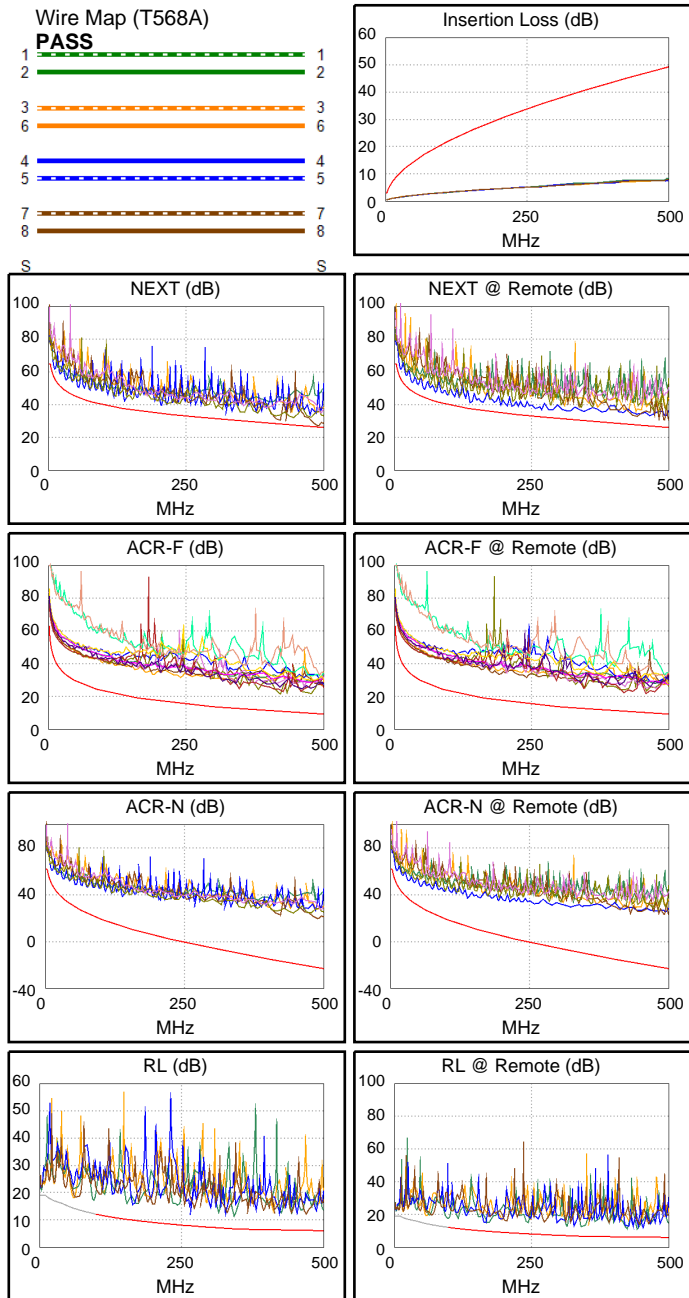
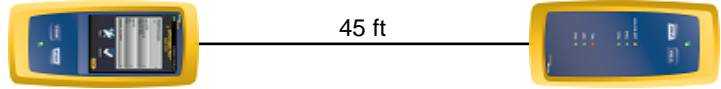
Date / Time: 12/07/2016 06:37:39 AM
Headroom 0.7 dB (NEXT 36-45)
Test Limit: TIA Cat 6A Channel
 Cable Type: Cat 6 U/UTP
 NVP: 69.0%

Operator: EVANDRO
 Software Version: V3.0 Build 6
 Limits Version: V3.0
 Calibration Date:
 Main (Module): 06/06/2013
 Remote (Module): 06/04/2013

Test Summary: PASS

Model: DSX-5000
 Main S/N: 2420012
 Remote S/N: 2420016
 Main Adapter: DSX-CHA004
 Remote Adapter: DSX-CHA004

Length (ft), Limit 328	[Pair 36]	45
Prop. Delay (ns), Limit 555	[Pair 12]	69
Delay Skew (ns), Limit 50	[Pair 12]	3
Resistance (ohms)	[Pair 12]	2.3
Insertion Loss Margin (dB)	[Pair 36]	41.0
Frequency (MHz)	[Pair 36]	499.0
Limit (dB)	[Pair 36]	49.3



Worst Case Margin Worst Case Value

PASS	MAIN	SR	MAIN	SR
Worst Pair	36-45	12-78	36-45	36-45
NEXT (dB)	0.7*	3.0	0.7	4.5
Freq. (MHz)	490.0	139.5	490.0	500.0
Limit (dB)	26.3	37.5	26.3	26.1
Worst Pair	36	78	36	36
PS NEXT (dB)	2.5	5.0	2.5	6.0
Freq. (MHz)	490.0	139.5	490.0	482.0
Limit (dB)	23.5	34.6	23.5	23.7

PASS	MAIN	SR	MAIN	SR
Worst Pair	36-45	45-36	36-45	45-36
ACR-F (dB)	10.6	10.5	10.6	10.5
Freq. (MHz)	422.0	422.0	422.0	422.0
Limit (dB)	10.8	10.8	10.8	10.8
Worst Pair	36	36	36	36
PS ACR-F (dB)	12.7	12.5	12.8	13.4
Freq. (MHz)	421.0	422.0	461.0	477.0
Limit (dB)	7.8	7.8	7.0	6.7

N/A	MAIN	SR	MAIN	SR
Worst Pair	12-78	12-78	36-45	36-45
ACR-N (dB)	11.6	11.4	42.0	46.4
Freq. (MHz)	10.5	10.1	490.0	500.0
Limit (dB)	49.6	50.0	-22.4	-23.2
Worst Pair	78	78	36	36
PS ACR-N (dB)	13.0	13.2	43.7	47.6
Freq. (MHz)	9.4	10.1	490.0	492.0
Limit (dB)	48.2	47.4	-25.3	-25.5

PASS	MAIN	SR	MAIN	SR
Worst Pair	45	45	45	36
RL (dB)	4.4	4.4	4.8	4.5
Freq. (MHz)	329.0	329.0	425.0	444.0
Limit (dB)	6.8	6.8	6.0	6.0

Compliant Network Standards:
 10BASE-T 100BASE-TX 100BASE-T4
 1000BASE-T 10GBASE-T ATM-25
 ATM-51 ATM-155 100VG-AnyLan
 TR-4 TR-16 Active TR-16 Passive

* Measurement is within the accuracy limits of the instrument.